

Approximate Gross Internal Area = 359.5 sq m / 3870 sq ft
 Outbuilding = 24.2 sq m / 260 sq ft
 Total = 383.7 sq m / 4130 sq ft
 (Excluding Boot / Boiler Room)

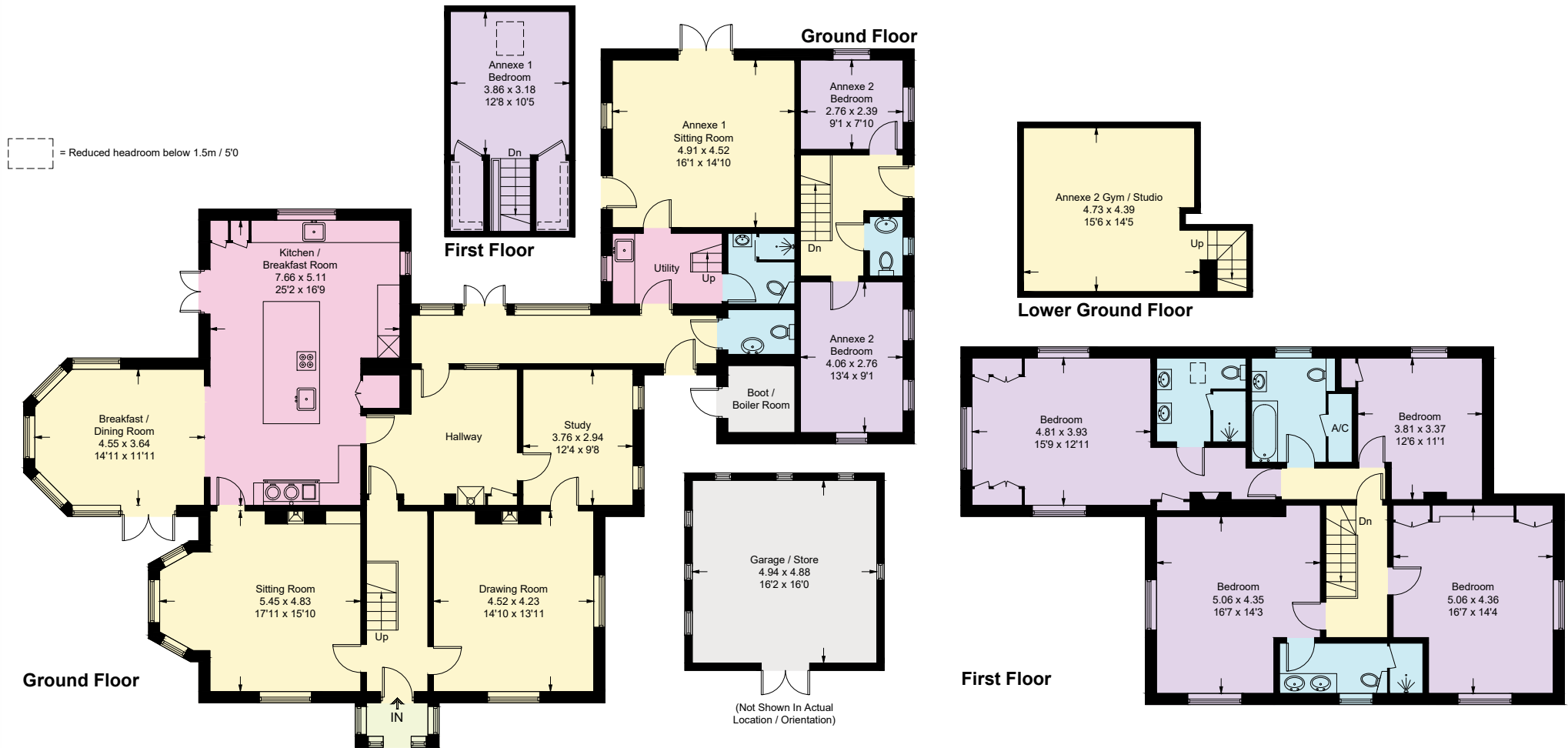


Illustration for identification purposes only, measurements are approximate, not to scale. Fourlabs.co © (ID1182851)