

Tite Hill, Englefield Green TW20



A beautifully presented family home in a highly sought after location.



Roughacre is a beautiful detached family home in the sought after village of Englefield Green. This house offers superb accommodation over two floors with a quality finish throughout. The flowing layout is ideal for both family life and entertaining. Roughacre was built in 1927 by the chief surveyor of Windsor Great Park, for his newly married daughter. After WW2, it was owned and occupied by Richard Dolman who was a film star in the 1930's. Dolman was also an artist and designed the mosaics seen over the garage as well as the tree of life on the staircase. Between 1959 and 1961, he extended the house, including the spectacular drawing room and the moulded ceiling which was removed from the Victorian post office in Egham before it was demolished. The current owners have significantly extended and refurbished the house during their ownership over the last 10 years.







Virginia Water 2.7 miles. Sunningdale 5 miles. Windsor 5 miles. Egham Train Station 0.9 miles Heathrow (T5) 6 miles. All distances are approximate.



Communications are excellent with fast access to London, the M25 and Heathrow and Gatwick airports. Sporting facilities in the area are numerous and include racing at Ascot and Windsor, polo at Smith's Lawn, Windsor Great Park and the Royal County of Berkshire Polo Club. There is extensive schooling in the area including Bishopsgate School, St. John's Beaumont, Eton College, St. Mary's School, Heathfield, St. George's, Papplewick, Marist Convent, Tasis England American School and The American Community School. There are coach services from Englefield Green to the Hampton School, Lady Eleanor Holles, Sir William Perkin's, Chertsey, and St. George's, Weybridge.







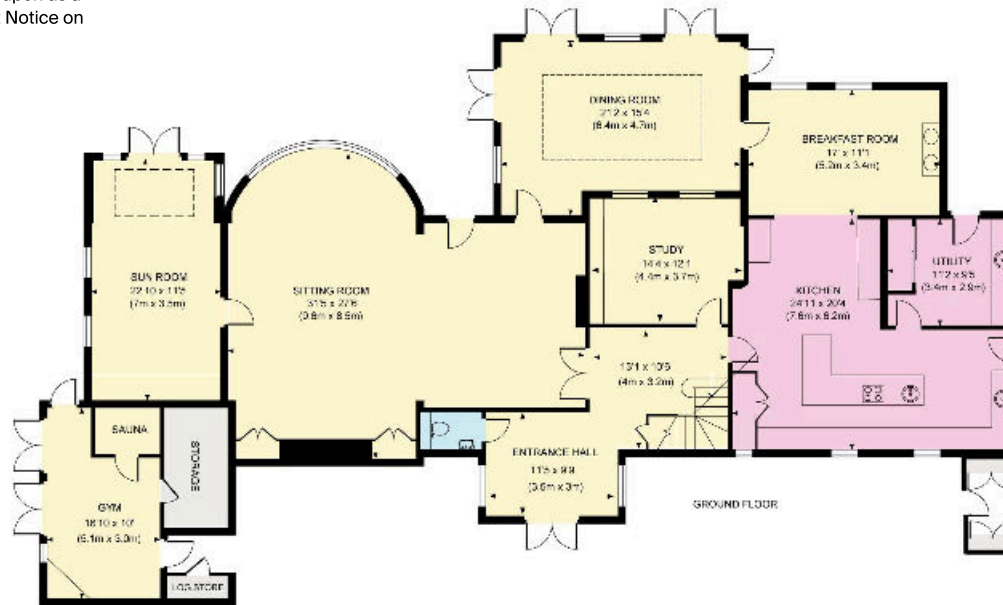
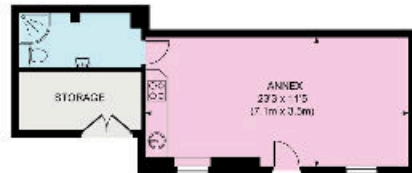
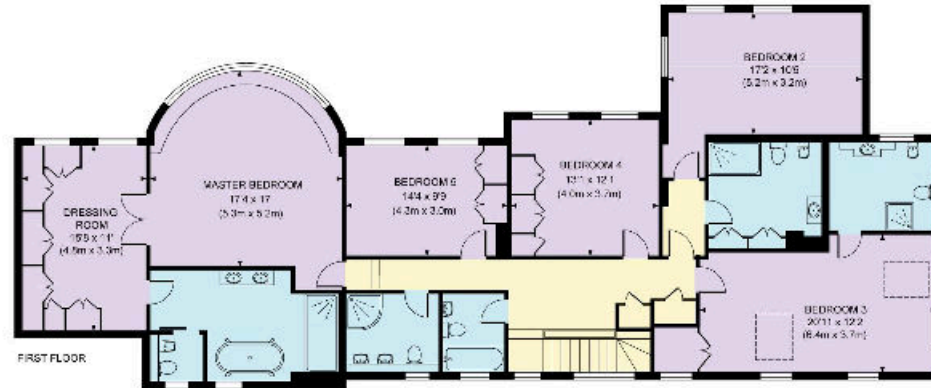
The property is approached via an attractive driveway which leads to the front of the house as well as providing access to the detached double garage. The rear garden is a particular feature of the property comprising sizeable south facing terrace overlooking the well maintained level lawns. Also within the grounds are a one bedroom self contained annex, a workshop, gym and sauna.





Approximate Gross Internal Floor Area
413,8 sq m/4454 sq ft
 Approximate Gross Internal Area Outbuildings
80,4 sq m/865 sq ft
Total 5319 sq ft/494.2 sq m

This plan is for guidance only and must not be relied upon as a statement of fact. Attention is drawn to the Important Notice on the last page of the text of the Particulars



Knight Frank
 Ascot
 59 High Street
 Ascot
 SL5 7HP

Knight Frank
 Virginia Water
 20 Station Approach
 Virginia Water
 GU25 4DW

I would be delighted to tell you more.

Edward Shaw
 01344 293140
 edward.shaw@knightfrank.com

OnTheMarket.com



Connecting people & property, perfectly.

Fixtures and fittings: A list of the fitted carpets, curtains, light fittings and other items fixed to the property which are included in the sale (or may be available by separate negotiation) will be provided by the Seller's Solicitors.

Important Notice 1. Particulars: These particulars are not an offer or contract, nor part of one. You should not rely on statements by Knight Frank LLP in the particulars or by word of mouth or in writing ("information") as being factually accurate about the property, its condition or its value. Neither Knight Frank LLP nor any joint agent has any authority to make any representations about the property, and accordingly any information given is entirely without responsibility on the part of the agents, seller(s) or lessor(s). 2. Photos etc: The photographs show only certain parts of the property as they appeared at the time they were taken. Areas, measurements and distances given are approximate only. 3. Regulations etc: Any reference to alterations to, or use of, any part of the property does not mean that any necessary planning, building regulations or other consent has been obtained. A buyer or lessee must find out by inspection or in other ways that these matters have been properly dealt with and that all information is correct. 4. VAT: The VAT position relating to the property may change without notice. 5. To find out how we process Personal Data, please refer to our Group Privacy Statement and other notices at <https://www.knightfrank.com/legals/privacy-statement>. Particulars dated February 2020 Photographs dated February 2020. Knight Frank is the trading name of Knight Frank LLP. Knight Frank LLP is a limited liability partnership registered in England and Wales with registered number OC305934. Our registered office is at 55 Baker Street, London W1U 8AN where you may look at a list of members' names. If we use the term 'partner' when referring to one of our representatives, that person will either be a member, employee, worker or consultant of Knight Frank LLP and not a partner in a partnership. If you do not want us to contact you further about our services then please contact us by either calling 020 3544 0692, email to marketing.help@knightfrank.com or post to our UK Residential Marketing Manager at our registered office (above) providing your name and address.