



*Sycamore Court,
Weybridge
KT13*







A stunning ground floor two bedroom, two bathroom apartment with access to a private, wraparound terrace.

There is a large en suite principal room; a second bedroom, family bathroom and large open plan kitchen, living, dining room with large bay windows. Outside, there is a private garden/patio area with french doors owned by flat.

Sycamore Court is a highly sought after and private development with secure gates and a dedicated parking space.









Weybridge and Walton offer an extensive range of leisure pursuits including river walks and bike rides along the towpaths of the Thames and the Wey. Mercedes Benz World and the famous Brooklands Museum including Concorde are conveniently located.

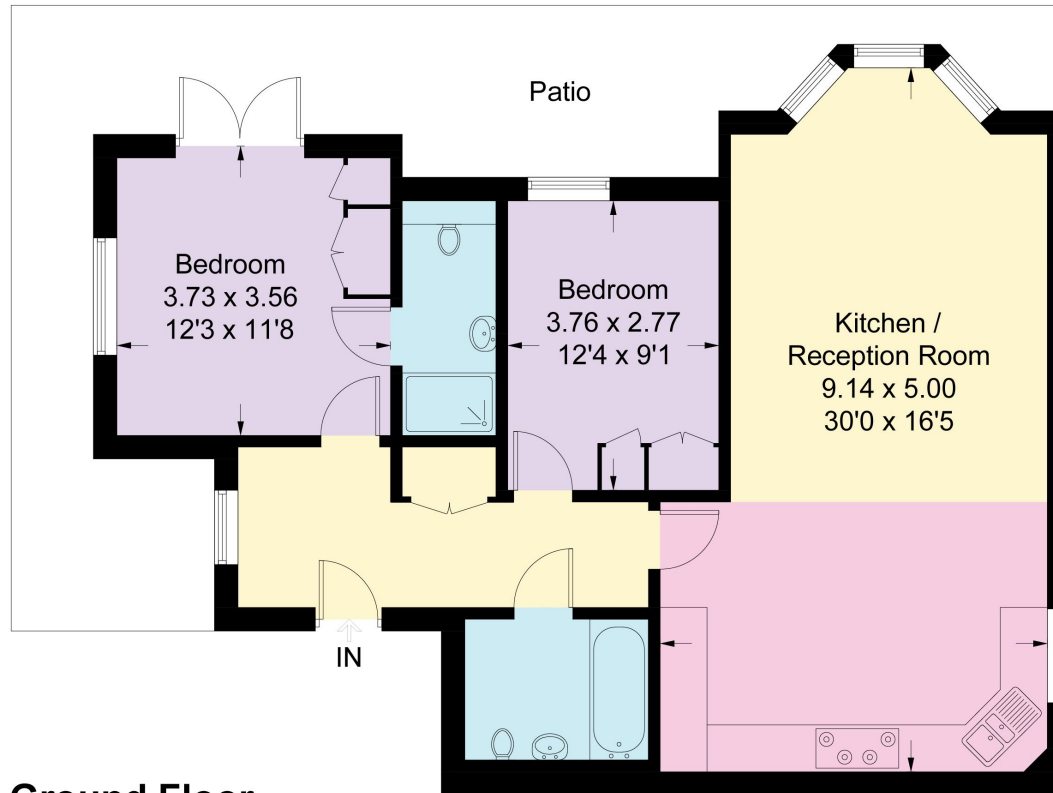
Weybridge town centre has a range of both high street chains and individual boutiques, including a Waitrose supermarket and an excellent mix of restaurants and gastro pubs including Cote Brassiere, Prezzo, The Ship Hotel, The Minnow and The Queens Head. Brooklands also offers a wider range of shopping including Marks and Spencer.

Schooling in the area is superb with an excellent selection of both private and state schools including Cleves School, Oatlands Infant School and Manby Lodge (all subject to catchment areas) and a superb choice of private schools including St Georges Junior and College, Hampton, Halliford, Sir Williams Perkins, Reeds, Notre Dame, Feltonfleet and the ACS International School.



Oatlands Chase, KT13

Approximate Gross Internal Area = 83.9 sq m / 904 sq ft



Ground Floor

Measured in accordance with RICS Code of Measuring Practice. To be used for identification and guidance purposes only. Whilst every care is taken in the preparation of this plan, please check all dimensions, shapes and compass bearings before making any decisions reliant upon them. www.london58.com © 2021 hello@london58.com

Knight Frank

20 High Street
Weybridge
Surrey KT13 8AB

We would be delighted to tell you more.

Andrew Chambers
01932 548 001
andrew.chambers@knightfrank.com

Natalie Berthiaud
01932 548 002
natalie.berthiaud@knightfrank.com



Connecting people & property, perfectly.

Fixtures and fittings: A list of the fitted carpets, curtains, light fittings and other items fixed to the property which are included in the sale (or may be available by separate negotiation) will be provided by the Seller's Solicitors.

Important Notice: 1. Particulars: These particulars are not an offer or contract, nor part of one. You should not rely on statements by Knight Frank LLP in the particulars or by word of mouth or in writing ("information") as being factually accurate about the property, its condition or its value. Neither Knight Frank LLP nor any joint agent has any authority to make any representations about the property, and accordingly any information given is entirely without responsibility on the part of the agents, seller(s) or lessor(s). 2. Photos, Videos etc: The photographs, property videos and virtual viewings etc. show only certain parts of the property as they appeared at the time they were taken. Areas, measurements and distances given are approximate only. 3. Regulations etc: Any reference to alterations to, or use of, any part of the property does not mean that any necessary planning, building regulations or other consent has been obtained. A buyer or lessee must find out by inspection or in other ways that these matters have been properly dealt with and that all information is correct. 4. VAT: The VAT position relating to the property may change without notice. 5. To find out how we process Personal Data, please refer to our Group Privacy Statement and other notices at <https://www.knightfrank.com/legals/privacy-statement>.

Particulars dated February 2021. Photographs and videos dated February 2021.

Knight Frank is the trading name of Knight Frank LLP. Knight Frank LLP is a limited liability partnership registered in England and Wales with registered number OC305934. Our registered office is at 55 Baker Street, London W1U 8AN where you may look at a list of members' names. If we use the term 'partner' when referring to one of our representatives, that person will either be a member, employee, worker or consultant of Knight Frank LLP and not a partner in a partnership. If you do not want us to contact you further about our services then please contact us by either calling 020 3544 0692, email to marketing.help@knightfrank.com or post to our UK Residential Marketing Manager at our registered office (above) providing your name and address.