



York Road, Weybridge



A sympathetically renovated detached house.

Built in the 1930's the house is set back from the road by mature hedging and approached by a carriage driveway.

The ground floor main living space flows well and includes a large living room with fireplace linked to conservatory, large dining room and an eat-in kitchen. There is a separate study space, utility room and a ground floor studio annexe with it's own access and bathroom.

Upstairs the principal bedroom features a walk-in wardrobe and modern en suite with walk in shower. There are three further double bedrooms and a large family bathroom with a shower over a large bath.

The house has a large west facing mature garden which has been beautifully landscaped and designed. There is a separate garage, currently used as a workshop and music room.

York Road is a charming street, conveniently yet quietly located for amenities along Queens Road and Weybridge town centre and within catchments for many local schools, including Oatlands, Manby Lodge and Heathside School.









Local area.

Weybridge station 0.8 miles, Weybridge 0.7 miles, Walton 2 miles,
Cobham 4 miles, Kingston 8 miles, Guildford 13 miles, Central
London 25 miles.

All distance are approximate

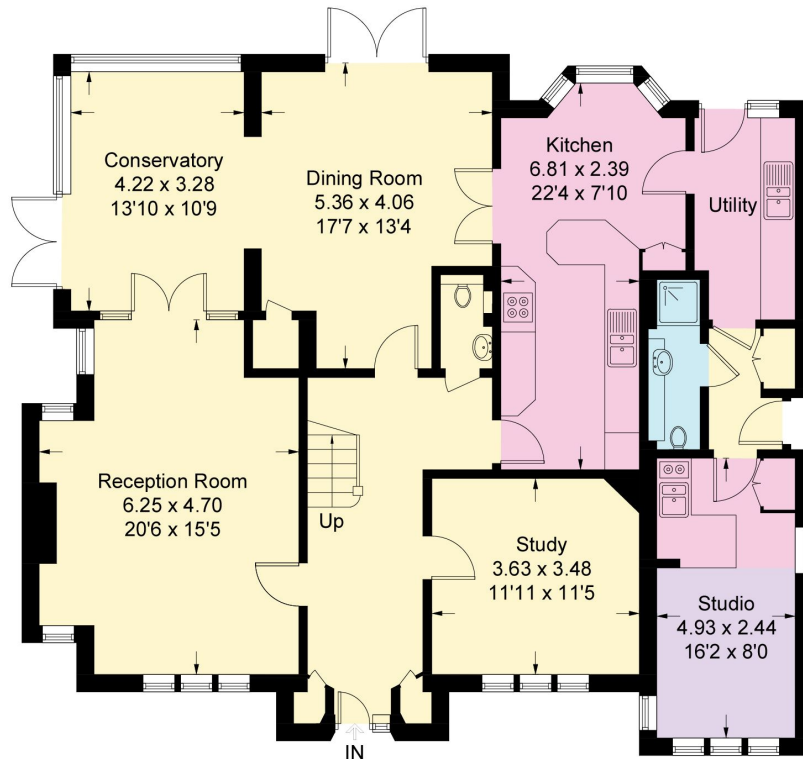




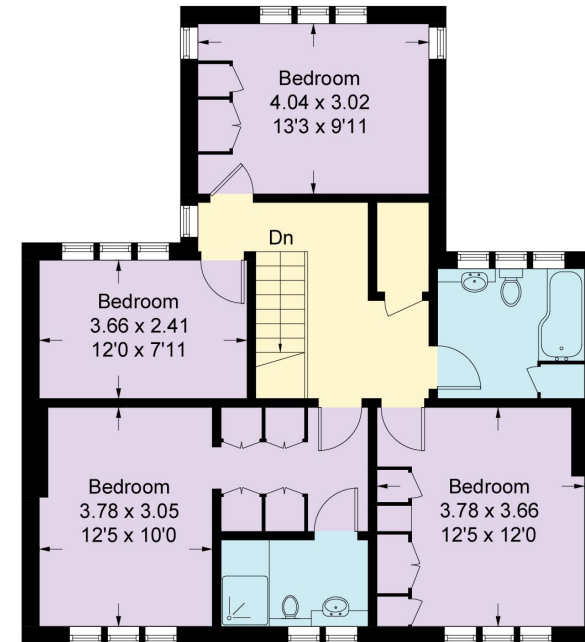


York Road, KT13

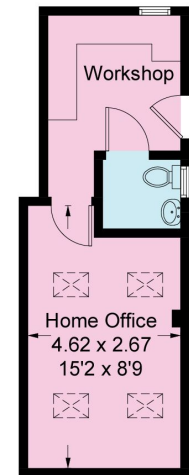
Approximate Gross Internal Area = 215.9 sq m / 2324 sq ft
Outbuilding = 20.2 sq m / 218 sq ft
Total = 236.1 sq m / 2542 sq ft



Ground Floor



First Floor



(Not Shown In Actual Location / Orientation)

Outbuilding

Knight Frank
20 High Street
Weybridge
KT13 8AB

[knightfrank.co.uk](https://www.knightfrank.co.uk)

We would be delighted to tell you more

Natalie Berthiaud

01932 548002

natalie.berthiaud@knightfrank.com



Fixtures and fittings: A list of the fitted carpets, curtains, light fittings and other items fixed to the property which are included in the sale (or may be available by separate negotiation) will be provided by the Seller's Solicitors.

Important Notice: 1. Particulars: These particulars are not an offer or contract, nor part of one. You should not rely on statements by Knight Frank LLP in the particulars or by word of mouth or in writing ("information") as being factually accurate about the property, its condition or its value. Neither Knight Frank LLP nor any joint agent has any authority to make any representations about the property, and accordingly any information given is entirely without responsibility on the part of the agents, seller(s) or lessor(s). 2. Photos, Videos etc: The photographs, property videos and virtual viewings etc. show only certain parts of the property as they appeared at the time they were taken. Areas, measurements and distances given are approximate only. 3. Regulations etc: Any reference to alterations to, or use of, any part of the property does not mean that any necessary planning, building regulations or other consent has been obtained. A buyer or lessee must find out by inspection or in other ways that these matters have been properly dealt with and that all information is correct. 4. VAT: The VAT position relating to the property may change without notice. 5. To find out how we process Personal Data, please refer to our Group Privacy Statement and other notices at <https://www.knightfrank.com/legals/privacy-statement>.

Particulars dated May 2022. Photographs and videos dated May 2022.

Knight Frank is the trading name of Knight Frank LLP. Knight Frank LLP is a limited liability partnership registered in England and Wales with registered number OC305934. Our registered office is at 55 Baker Street, London W1U 8AN where you may look at a list of members' names. If we use the term 'partner' when referring to one of our representatives, that person will either be a member, employee, worker or consultant of Knight Frank LLP and not a partner in a partnership. If you do not want us to contact you further about our services then please contact us by either calling 020 3544 0692, email to marketing.help@knightfrank.com or post to our UK Residential Marketing Manager at our registered office (above) providing your name and address.