



Thames Street, Weybridge, Surrey



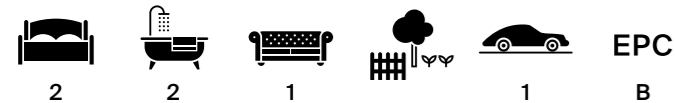
An immaculate duplex apartment in Weybridge town centre.

A superb duplex apartment of exacting standards. Entry is via your own front door which leads to the first floor dual aspect kitchen/living room.

The shaker style kitchen provides an abundance of floor and wall mounted units with integrated appliances, gas hob and Belfast sink. The living area encompasses enough room for four-person dining table large L-shaped sofa and freestanding furniture.

To the upper floor there is a generous principal bedroom suite with bespoke fitted wardrobes and en suite shower room. Further double and bedroom and separate shower room.

Externally there is a garden area, designated parking space and communal bike storage.



Tenure

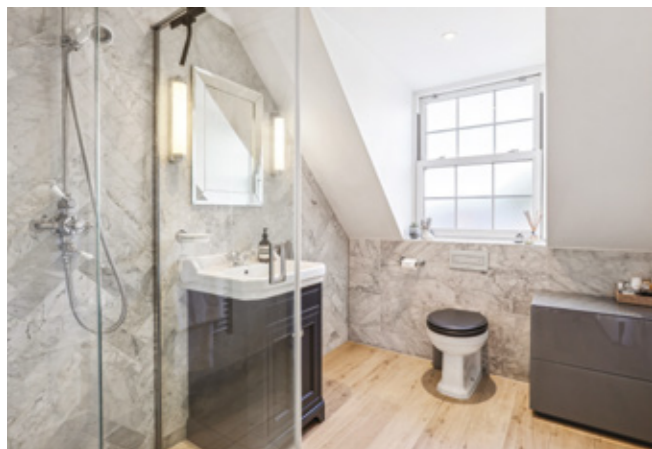
Share of Freehold

Local Authority

Elmbridge Borough Council

Council Tax

Band D



Location

Weybridge town centre is conveniently located within 0.2 mile along with the village cricket green and Queens Road area with its wide range of boutique shops and restaurants. The town centre offering everyday conveniences including Waitrose, Boots and a number of coffee shops, pubs and restaurants.

The apartment is perfectly placed for the River Thames is within 0.25 mile along with the popular gastro pub, The Minnow.

The town has a number of leisure pursuits available including two health clubs, Bannatyne Health and David Lloyd along with St Georges Hill Tennis Club and Golf Club, Burhill Golf Club, Mercedes Benz World and The Brooklands Museum.

The A3, M25 and the M3 are within easy reach alongside bus routes which go directly to Walton-on-Thames, Hersham, Kingston and Guildford.

The train station is located on the edge of town and provides regular service to London Waterloo. London Heathrow and Gatwick airports are accessed via the M25.

Distances

Weybridge Town Centre 0.3 miles, Weybridge Station 1.25 miles
Cobham 5 miles, Esher 5 miles, Guildford 14 miles, Central London 24 miles
(All distances are approximate).

Approximate Gross Internal Floor Area

97.3 sq m / 1048 sq ft

(Including Reduced Headroom)

This plan is for guidance only and must not be relied upon as a statement of fact. Attention is drawn to the Important Notice on the last page of the text of the Particulars.



Knight Frank Weybridge

20 High Street

Weybridge

KT13 8AB

[knightfrank.co.uk](https://www.knightfrank.co.uk)

We would be delighted to tell you more

Natalie Berthiaud

01932 548002

natalie.berthiaud@knightfrank.com

Matthew Scott

01932 548001

matthew.scott@knightfrank.com



Fixtures and fittings: A list of the fitted carpets, curtains, light fittings and other items fixed to the property which are included in the sale (or may be available by separate negotiation) will be provided by the Seller's Solicitors.

Important Notice: 1. Particulars: These particulars are not an offer or contract, nor part of one. You should not rely on statements by Knight Frank LLP in the particulars or by word of mouth or in writing ("information") as being factually accurate about the property, its condition or its value. Neither Knight Frank LLP nor any joint agent has any authority to make any representations about the property, and accordingly any information given is entirely without responsibility on the part of the agents, seller(s) or lessor(s). 2. Photos, Videos etc: The photographs, property videos and virtual viewings etc. show only certain parts of the property as they appeared at the time they were taken. Areas, measurements and distances given are approximate only. 3. Regulations etc: Any reference to alterations to, or use of, any part of the property does not mean that any necessary planning, building regulations or other consent has been obtained. A buyer or lessee must find out by inspection or in other ways that these matters have been properly dealt with and that all information is correct. 4. VAT: The VAT position relating to the property may change without notice. 5. To find out how we process Personal Data, please refer to our Group Privacy Statement and other notices at <https://www.knightfrank.com/legals/privacy-statement>.

Particulars dated August 2024. Photographs and videos dated August 2024.

All information is correct at the time of going to print. Knight Frank is the trading name of Knight Frank LLP. Knight Frank LLP is a limited liability partnership registered in England and Wales with registered number OC305934. Our registered office is at 55 Baker Street, London W1U 8AN. We use the term 'partner' to refer to a member of Knight Frank LLP, or an employee or consultant. A list of members names of Knight Frank LLP may be inspected at our registered office. If you do not want us to contact you further about our services then please contact us by either calling 020 3544 0692, email to marketing.help@knightfrank.com or post to our UK Residential Marketing Manager at our registered office (above) providing your name and address. Brochure by wordperfectprint.com