



# Penthouse Fielding Court WC2









## Fielding Court

A fantastic opportunity to purchase a penthouse flat wedged perfectly between Covent Garden and Soho in Seven Dials.

The flat is spacious (internal 2,440 sq ft) and set over two floors with three private roof terraces (south and west-facing) which total over 2,000 sq ft.

Entering on the fourth floor (with direct lift access), you are greeted by a bright and stylish kitchen dining area with Miele and Gaggenau appliances, four double bedrooms which includes a large principal bedroom with en suite and its own terrace. There is also a family bathroom, separate WC, a separate utility area off the main bathroom and plenty of built in storage. There is also the added benefit of having the most up-to-date Crestron lighting and entertainment system throughout the flat.

Going up the stairs to the fifth floor you have a large reception area which leads out onto a fantastic roof terrace with views over Covent Garden and beyond.

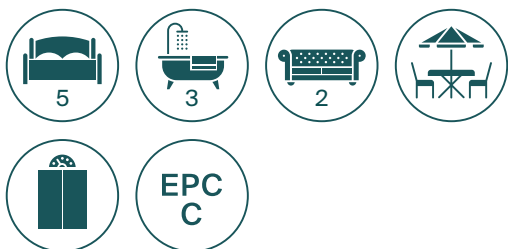
Finally, you have a little staircase up to the sunroom where you can relax and enjoy the view.

It was once the former home of Eurythmics co-founder Dave Stewart (who commissioned the bespoke '7 Dials' entry door) and hosted some of the most famous faces in music during the 1990s and 2000s - artists including (amongst others) George Harrison, David Bowie, Madonna, Joe Strummer, Lou Reed, Damon Albarn, Sinéad O'Connor, Gwen Stefani, Tracy Emin, Jeff Koons, Damien Hirst, Sam Mendes, Robbie Williams, the list goes on.

Leasehold approximately 94 years remaining.

## Location

*Seven Dials boasts a bustling village feel in the heart of the West End, with cobbled streets, boutique shops, popular eateries and cafes. Excellent numerous transport links and easy access to the City, make this an ideal central London location.*



**Guide price**  
**£4,195,000**





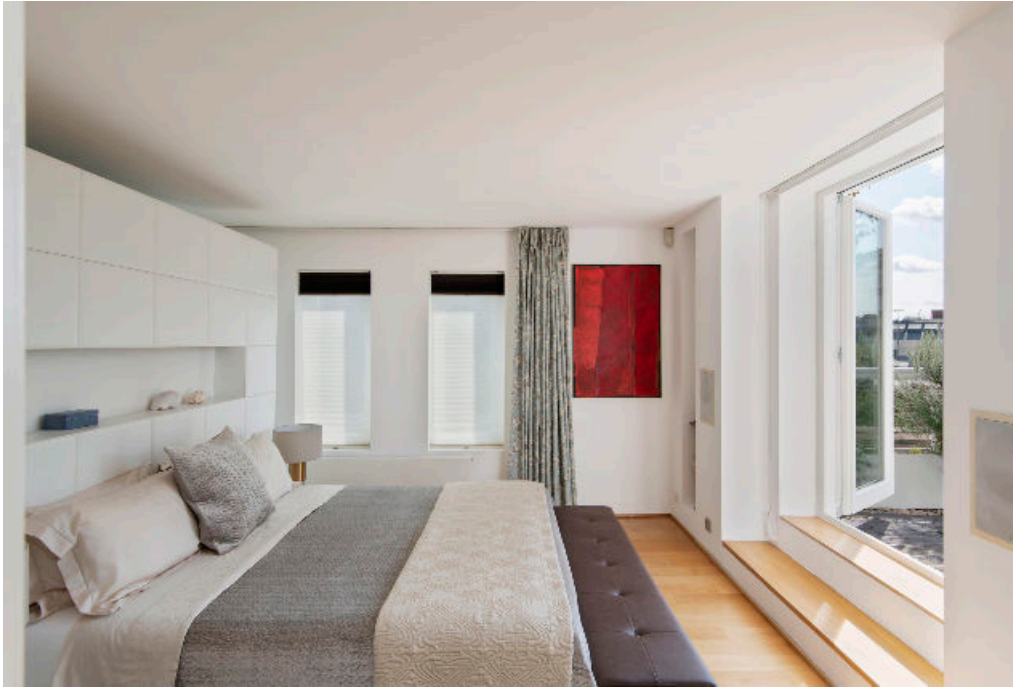
**A split level penthouse flat  
in Covent Garden with one  
of the best roof terraces .**















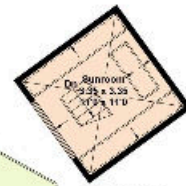


## Fielding Court, WC2

Approximate Floor Area = 232.1 sq m / 2498 sq ft  
Including Limited Use Area (5.4 sq m / 58 sq ft)  
Approximate Terrace Areas = 189.4 sq m / 2039 sq ft  
(Excluding Service Void / Lift)



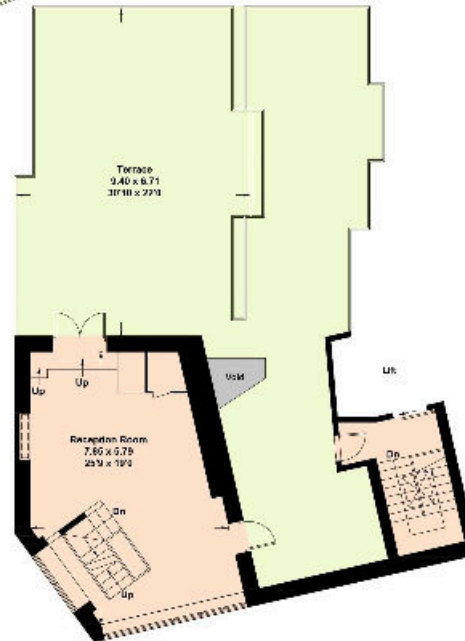
This plan is for layout guidance only. Not drawn to scale unless stated. Windows and door openings are approximate. Whilst every care is taken in the preparation of this plan, please check all dimensions, shapes and compass bearings before making any decisions reliant upon them. (ID787738)



Sixth Floor



Fourth Floor



Fifth Floor

Knight Frank  
Mayfair  
120a Mount Street,  
London W1K 3NN

[knightfrank.co.uk](https://www.knightfrank.co.uk)

**We would be delighted to tell you more.**

**Jonathan Fieldman**  
020 7647 6615  
[jonathan.fieldman@knightfrank.com](mailto:jonathan.fieldman@knightfrank.com)



**Connecting people & property, perfectly.**

Fixtures and fittings: A list of the fitted carpets, curtains, light fittings and other items fixed to the property which are included in the sale (or may be available by separate negotiation) will be provided by the Seller's Solicitors.

Important Notice: 1. Particulars: These particulars are not an offer or contract, nor part of one. You should not rely on statements by Knight Frank LLP in the particulars or by word of mouth or in writing ("information") as being factually accurate about the property, its condition or its value. Neither Knight Frank LLP nor any joint agent has any authority to make any representations about the property, and accordingly any information given is entirely without responsibility on the part of the agents, seller(s) or lessor(s). 2. Photos, Videos etc: The photographs, property videos and virtual viewings etc. show only certain parts of the property as they appeared at the time they were taken. Areas, measurements and distances given are approximate only. 3. Regulations etc: Any reference to alterations to, or use of, any part of the property does not mean that any necessary planning, building regulations or other consent has been obtained. A buyer or lessee must find out by inspection or in other ways that these matters have been properly dealt with and that all information is correct. 4. VAT: The VAT position relating to the property may change without notice. 5. To find out how we process Personal Data, please refer to our Group Privacy Statement and other notices at <https://www.knightfrank.com/legal/privacy-statement>.

Particulars dated August 2021. Photographs and videos dated August 2021.

Knight Frank is the trading name of Knight Frank LLP. Knight Frank LLP is a limited liability partnership registered in England and Wales with registered number OC305934. Our registered office is at 55 Baker Street, London W1U 8AN where you may look at a list of members' names. If we use the term 'partner' when referring to one of our representatives, that person will either be a member, employee, worker or consultant of Knight Frank LLP and not a partner in a partnership. If you do not want us to contact you further about our services then please contact us by either calling 020 3544 0692, email to [marketing.help@knightfrank.com](mailto:marketing.help@knightfrank.com) or post to our UK Residential Marketing Manager at our registered office (above) providing your name and address.