



Rosebery Court, Charles Street **WIJ**

Rosebery Court

Charles Street W1J

The property is situated on the first floor of a portered building and in need of modernisation throughout. There is a semi open plan/kitchen living area looking out onto the communal courtyard, two double bedrooms, and two bathrooms. The flat also benefits from a very long lease and it's own car parking space. There are excellent transport links closeby, these include Green Park (0.3 miles), Hyde Park Corner (0.5 miles), Piccadilly Circus (0.7 miles) and Bond Street (0.5 miles). Crossrail will also be available at Bond Street station. The greenery of the Royal parks, Hyde Park and Green Park are a short distance away, alongside an abundance of shops and eateries (all distances are approximate).



Guide price: £1,590,000

Tenure: Share of freehold plus leasehold, approximately 976 years remaining

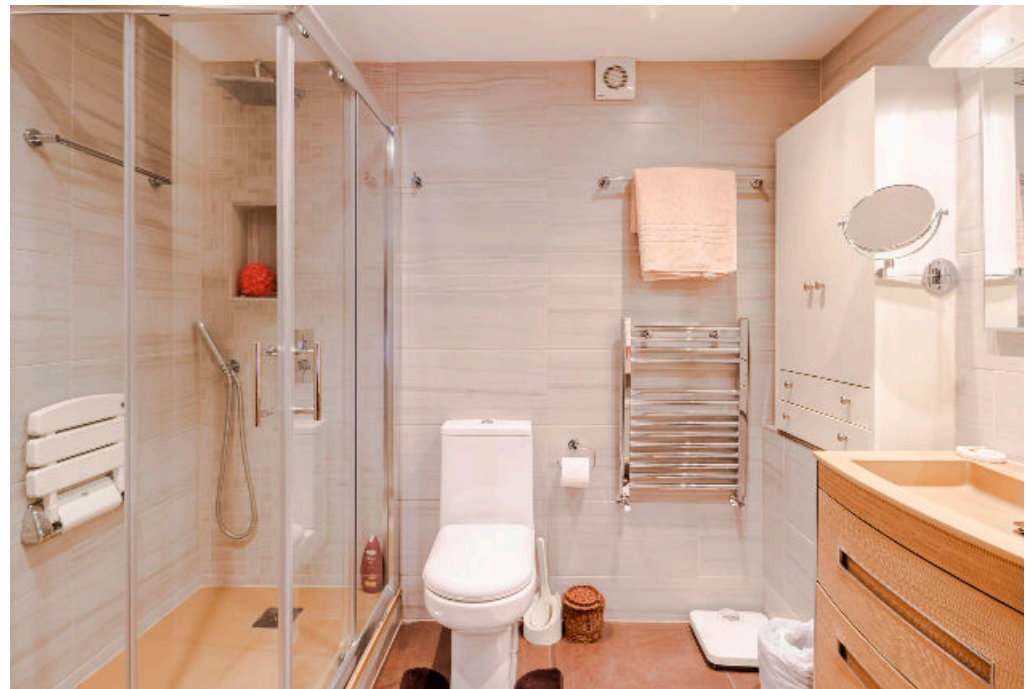
Service charge: £10,000 per annum, reviewed every year, next review due 2024/2025

Ground rent: Peppercorn

Local authority: City of Westminster

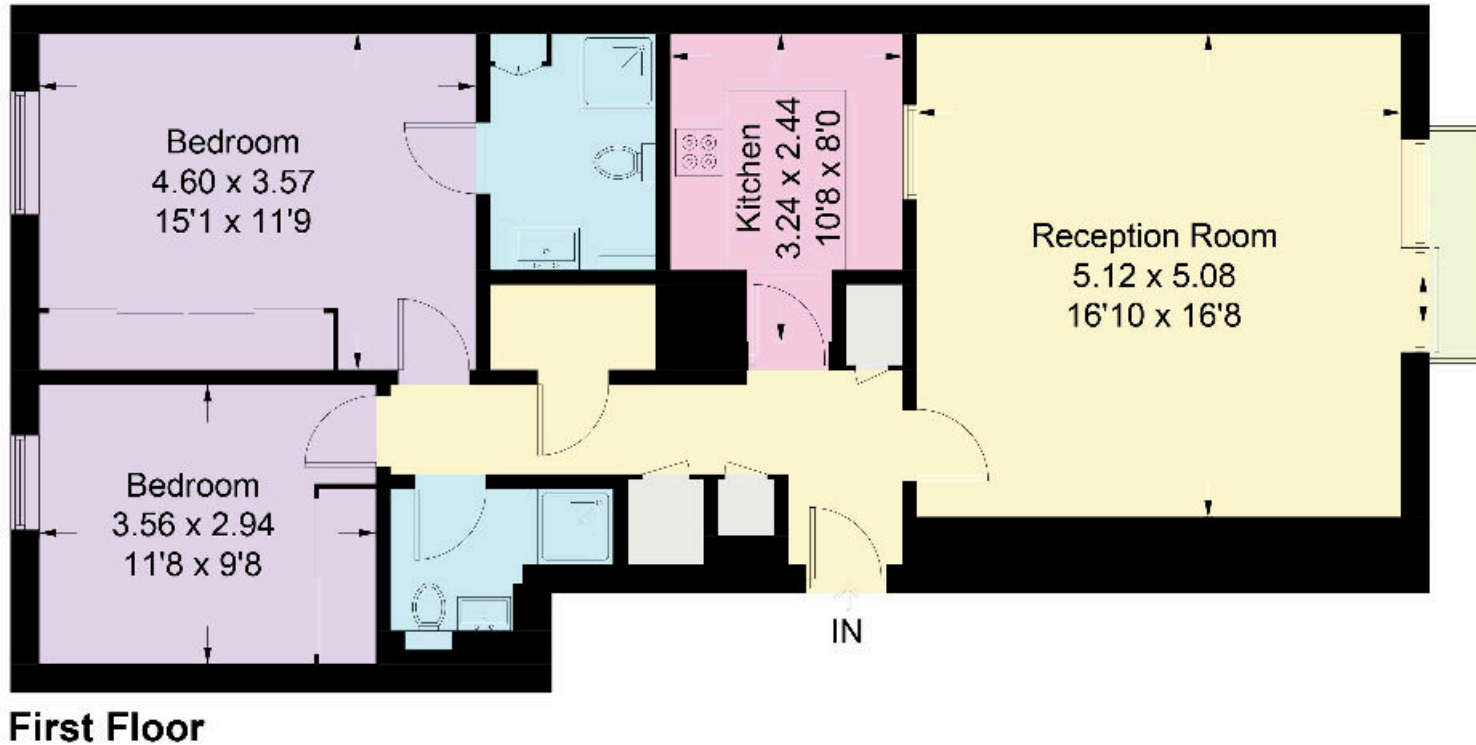
Council tax band: G





Rosebery Court

Approximate Gross Internal Area = 83.4 sq m / 898 sq ft



First Floor

Illustration for identification purposes only, measurements are approximate, not to scale. floorplansUsketch.com © (ID939422)

Knight Frank
Mayfair
120a Mount Street
London W1K 3NN

I would be delighted to tell you more
Jonathan Fieldman
+44 20 7647 6615
jonathan.fieldman@knightfrank.com

[knightfrank.co.uk](https://www.knightfrank.co.uk)



Fixtures and fittings: A list of the fitted carpets, curtains, light fittings and other items fixed to the property which are included in the sale (or may be available by separate negotiation) will be provided by the Seller's Solicitors.
Important Notice: 1. Particulars: These particulars are not an offer or contract, nor part of one. You should not rely on statements by Knight Frank LLP in the particulars or by word of mouth or in writing ("information") as being factually accurate about the property, its condition or its value. Neither Knight Frank LLP nor any joint agent has any authority to make any representations about the property, and accordingly any information given is entirely without responsibility on the part of the agents, seller(s) or lessor(s). 2. Photos, Videos etc: The photographs, property videos and virtual viewings etc. show only certain parts of the property as they appeared at the time they were taken. Areas, measurements and distances given are approximate only. 3. Regulations etc: Any reference to alterations to, or use of, any part of the property does not mean that any necessary planning, building regulations or other consent has been obtained. A buyer or lessee must find out by inspection or in other ways that these matters have been properly dealt with and that all information is correct. 4. VAT: The VAT position relating to the property may change without notice. 5. To find out how we process Personal Data, please refer to our Group Privacy Statement and other notices at <https://www.knightfrank.com/legals/privacy-statement>.
Particulars dated February 2023. Photographs and videos dated February 2023.
All information is correct at the time of going to print. Knight Frank is the trading name of Knight Frank LLP. Knight Frank LLP is a limited liability partnership registered in England and Wales with registered number OC305934. Our registered office is at 55 Baker Street, London W1U 8AN. We use the term 'partner' to refer to a member of Knight Frank LLP, or an employee or consultant. A list of members names of Knight Frank LLP may be inspected at our registered office. If you do not want us to contact you further about our services then please contact us by either calling 020 3544 0692, email to marketing.help@knightfrank.com or post to our UK Residential Marketing Manager at our registered office (above) providing your name and address.