



Upper Feilde, Park Street, Mayfair **WIK**

---



# Location

---

Park Street is located in the heart of Mayfair, just a few minutes' walk from the wonderful open green spaces of Hyde Park and Green Park. The property is perfectly situated for the upmarket restaurants and designer boutiques of Mount Street, and is within close proximity of prestigious Grosvenor Square and Berkeley Square, which plays host to exclusive private members clubs such as Annabel's. There is an abundance of designer retailers along Old Bond Street, and Oxford Street and Regent Street are also nearby, offering a vast array of shopping, restaurant and bar facilities. Park Street's transport links are excellent, with Bond Street station only 0.3 miles away.



**Guide price:** £8,500,000

**Tenure:** Leasehold: approximately 105 years remaining

**Service charge:** £17,700.36 per annum, reviewed every year, next review due 2025

**Ground rent:** We have been unable to confirm this. Please make your own enquiries.

**Local authority:** City of Westminster

**Council tax band:** H













## Accommodation

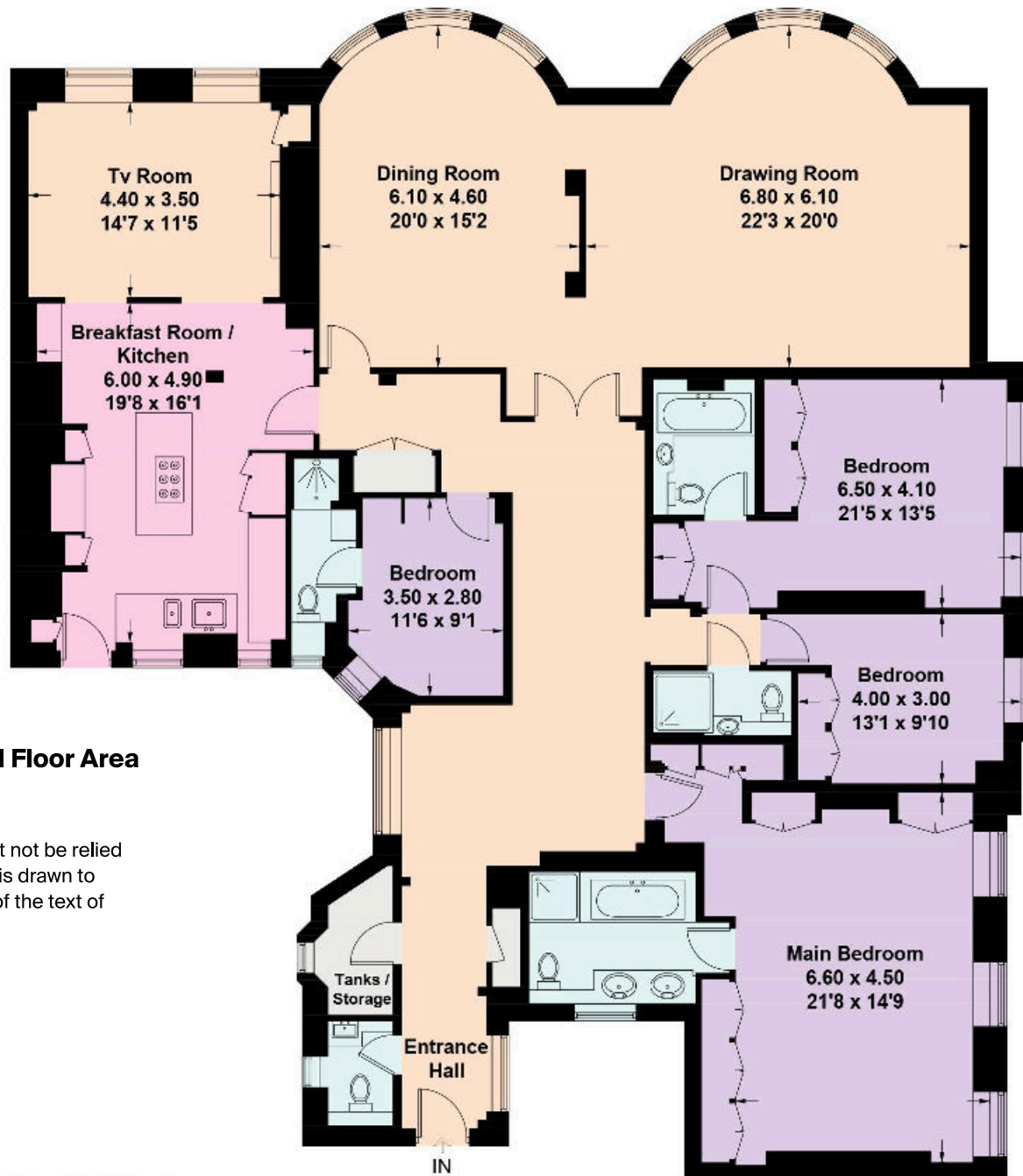
This well-proportioned four-bedroom apartment with porter and lift is situated on the fourth floor of one of Mayfair's most sought-after buildings and extends to more than 2850 sq ft. Offering extensive entertaining space and four bedroom suites, the apartment provides luxurious lateral Mayfair living at its finest.

Offered in good condition, accommodation comprises an open plan drawing room and dining room, kitchen/breakfast room, TV area, principal bedroom with en suite and plentiful wardrobes, three further bedroom suites, and a cloakroom.









**Approximate Gross Internal Floor Area  
266 sq m / 2,868 sq ft**

This plan is for guidance only and must not be relied upon as a statement of fact. Attention is drawn to the important notice on the last page of the text of the Particulars.

**Fourth Floor**

**Knight Frank**

**Alastair Nicholson**

**Mayfair**

**+44 20 7647 6612**

**120a Mount Street**

**alastair.nicholson@knightfrank.com**

**London W1K 3NN**

**[knightfrank.co.uk](https://www.knightfrank.co.uk)**

Your partners in property



Fixtures and fittings: A list of the fitted carpets, curtains, light fittings and other items fixed to the property which are included in the sale (or may be available by separate negotiation) will be provided by the Seller's Solicitors.

Important Notice: 1. Particulars: These particulars are not an offer or contract, nor part of one. You should not rely on statements by Knight Frank LLP in the particulars or by word of mouth or in writing ("information") as being factually accurate about the property, its condition or its value. Neither Knight Frank LLP nor any joint agent has any authority to make any representations about the property, and accordingly any information given is entirely without responsibility on the part of the agents, seller(s) or lessor(s). 2. Photos, Videos etc: The photographs, property videos and virtual viewings etc. show only certain parts of the property as they appeared at the time they were taken. Areas, measurements and distances given are approximate only. 3. Regulations etc: Any reference to alterations to, or use of, any part of the property does not mean that any necessary planning, building regulations or other consent has been obtained. A buyer or lessee must find out by inspection or in other ways that these matters have been properly dealt with and that all information is correct. 4. VAT: The VAT position relating to the property may change without notice. 5. To find out how we process Personal Data, please refer to our Group Privacy Statement and other notices at <https://www.knightfrank.com/legals/privacy-statement>.

Particulars dated November 2023. Photographs and videos dated October 2012.

All information is correct at the time of going to print. Knight Frank is the trading name of Knight Frank LLP. Knight Frank LLP is a limited liability partnership registered in England and Wales with registered number OC305934. Our registered office is at 55 Baker Street, London W1U 8AN. We use the term 'partner' to refer to a member of Knight Frank LLP, or an employee or consultant. A list of members names of Knight Frank LLP may be inspected at our registered office. If you do not want us to contact you further about our services then please contact us by either calling 020 3544 0692, email to [marketing.help@knightfrank.com](mailto:marketing.help@knightfrank.com) or post to our UK Residential Marketing Manager at our registered office (above) providing your name and address.