



Savoy Court, Covent Garden **WC2R**



Superb property in the Savoy Apartments

This beautiful property is located in the heart of the vibrant West End of London, with contemporary yet refined interiors offering spacious bedrooms and living areas. The apartment features a modern fitted kitchen, large reception room and separate laundry room. There are two spacious double bedrooms, one benefitting from an en suite shower room, and there is a second bathroom located directly across the hallway.

The apartment extends to 1,169 sq ft and is located on the fourth floor of the Savoy Court apartments, adjacent to the Savoy Hotel, and is accessed through a dedicated private entrance.



Guide price: £2,290,000

Tenure: Leasehold: approximately 170 years remaining

Service charge: £30,000 per annum, reviewed every year, next review due 2025

Local authority: City of Westminster

Council tax band: H

Further Information

There is a full 24-hour concierge service, and a communal internal lift opening up to the entrance lobby leading to the apartment.

Although independent from the Savoy Hotel, the apartment has the unique opportunity to benefit from the full facilities of this famous hotel with access via a private door directly from the apartment to the hotel should owners wish to avail themselves of these facilities.

Service charges cover all concierge services, maintenance of Savoy Court common areas including the lift, a communal heating and air flow system, and a dedicated team on hand to deal with any day to day property repairs.

Charges also cover full third party management of this unique property forming one of only 13 apartments in the Savoy Court building.

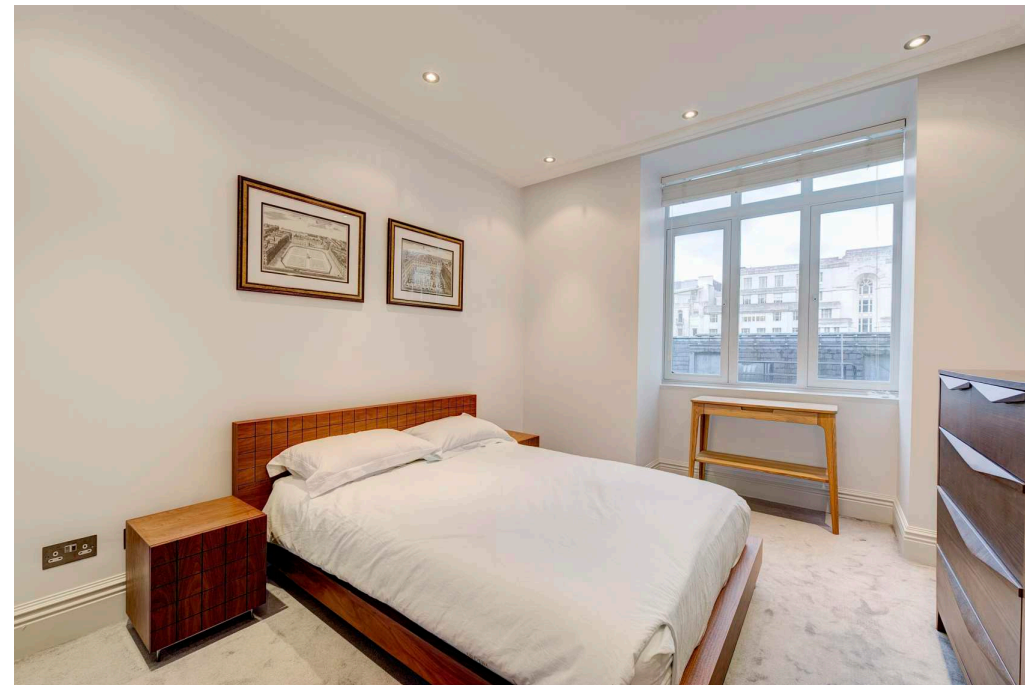




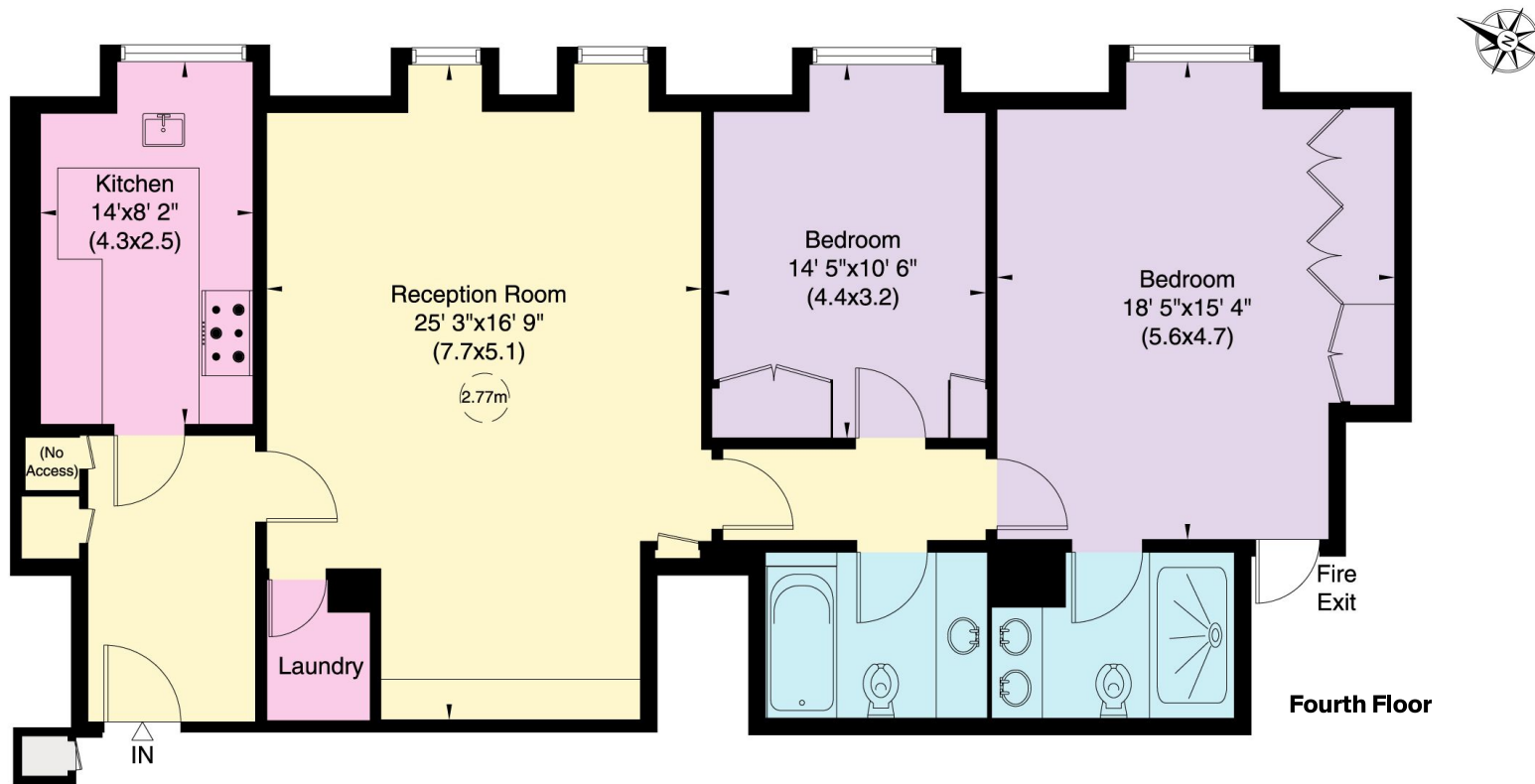
Location

Located in an enviable position close to Embankment, and adjacent to the world-renowned Savoy Hotel, the apartment is just moments from the bright lights of Theatreland, the Piazza, the Royal Opera House and Trafalgar Square.

There are excellent local transport links, including Charing Cross Station (0.3 miles) for the Bakerloo, Northern lines and National Rail services, and Covent Garden tube station (0.4 miles) for the Piccadilly line. All distances are approximate.







Approximate Gross Internal Floor Area
109 sq m / 1,169 sq ft (including no access area)

This plan is for guidance only and must not be relied upon as a statement of fact. Attention is drawn to the important notice on the last page of the text of the Particulars.

Knight Frank
Mayfair
 120a Mount Street
 London W1K 3NN

I would be delighted to tell you more
Kimberley Pratt
 +44 20 3892 3578
 kimberley.pratt@knightfrank.com

[knightfrank.co.uk](https://www.knightfrank.co.uk)



Fixtures and fittings: A list of the fitted carpets, curtains, light fittings and other items fixed to the property which are included in the sale (or may be available by separate negotiation) will be provided by the Seller's Solicitors.
 Important Notice: 1. Particulars: These particulars are not an offer or contract, nor part of one. You should not rely on statements by Knight Frank LLP in the particulars or by word of mouth or in writing ("information") as being factually accurate about the property, its condition or its value. Neither Knight Frank LLP nor any joint agent has any authority to make any representations about the property, and accordingly any information given is entirely without responsibility on the part of the agents, seller(s) or lessor(s). 2. Photos, Videos etc: The photographs, property videos and virtual viewings etc. show only certain parts of the property as they appeared at the time they were taken. Areas, measurements and distances given are approximate only. 3. Regulations etc: Any reference to alterations to, or use of, any part of the property does not mean that any necessary planning, building regulations or other consent has been obtained. A buyer or lessee must find out by inspection or in other ways that these matters have been properly dealt with and that all information is correct. 4. VAT: The VAT position relating to the property may change without notice. 5. To find out how we process Personal Data, please refer to our Group Privacy Statement and other notices at <https://www.knightfrank.com/legals/privacy-statement>.
 Particulars dated October 2024. Photographs and videos dated October 2024.
 All information is correct at the time of going to print. Knight Frank is the trading name of Knight Frank LLP. Knight Frank LLP is a limited liability partnership registered in England and Wales with registered number OC305934. Our registered office is at 55 Baker Street, London W1U 8AN. We use the term 'partner' to refer to a member of Knight Frank LLP, or an employee or consultant. A list of members names of Knight Frank LLP may be inspected at our registered office. If you do not want us to contact you further about our services then please contact us by either calling 020 3544 0692, email to marketing.help@knightfrank.com or post to our UK Residential Marketing Manager at our registered office (above) providing your name and address.