

# ARCLIGHT

## LOFTS

Industrial heritage  
meets contemporary  
living in Seven Dials.

Betterton Street  
Covent Garden, WC2

A  
POWERFUL  
LEGACY  
RE - ENGINEERED  
FOR  
MODERN  
LIVING

During the late 19th and early 20th **centuries**, this former **electricity-generating** plant was home to the mighty dynamos responsible for powering the bright carbon arc lights of **Strand's Royal Adelphi Theatre**.

Today, this historic building has been thoughtfully reimagined as a unique collection of lateral loft-style apartments, crowned by a contemporary duplex penthouse. All are finished to an exceptional standard with a modern specification, yet retain architectural details that highlight an authentic industrial heritage.





Images from photographer Josh Shinner documenting the industrial heritage and re-imagination of Arclight Lofts.



# HIGHLIGHTS

A unique collection of loft-style apartments in a reimagined industrial building.

---

Located within the Seven Dials conservation area and moments from Covent Garden.

---

A secure arrival hall with a feature oak timber wall of end-grain block panels.

---

High-specification finishes throughout all apartments and common areas.

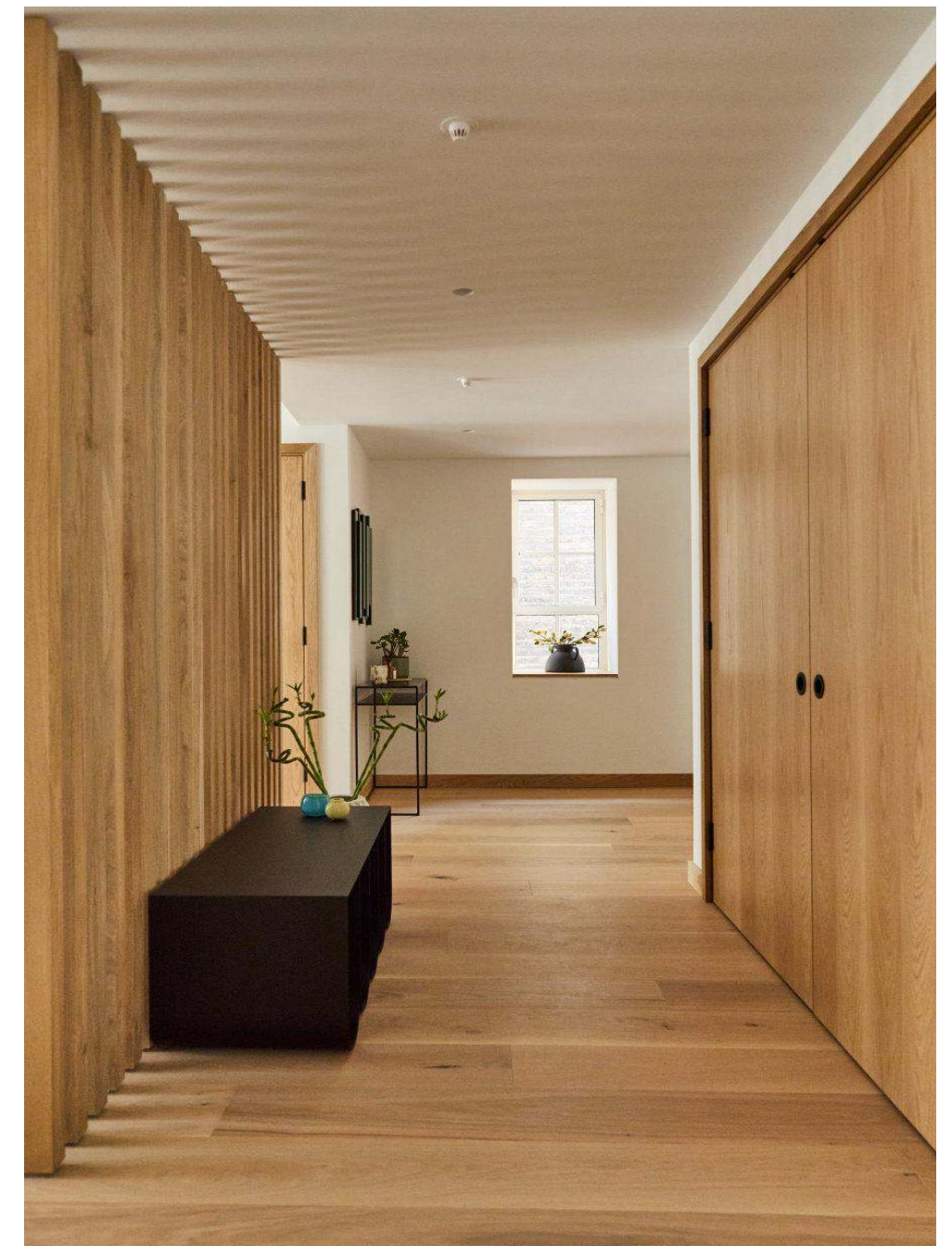
---

Two-bedroom lateral apartments with two bathrooms.

---

A duplex penthouse with three ensuite bedrooms and a generous private terrace.

---













Light-filled bedrooms feature double-glazed, thermally efficient steel windows, wool-blend carpets, and built-in double-sized wardrobes.





The clean, architectural lines of the bathrooms are complemented by warm natural tones of Bluestone tumbled-marble-mosaic wall tiles and contemporary brass Hansgrohe fittings.



## THE PENTHOUSE

The exclusive Penthouse at Arclight Lofts is an impressive and unique apartment configured over two floors, featuring a soaring double-height primary living space flooded with natural light from the floor-to-ceiling glazed facade.

Sliding glazed doors open to a connected private terrace, offering exceptional east-to-west panoramic views over the surrounding streets and rooftops of Covent Garden and Seven Dials. From the mezzanine level above, the principal bedroom suite offers a calming space with commanding views, a generous separate dressing area and contemporary en-suite bathroom.

# A NEIGHBOURHOOD RADIANT WITH LIFE



Seven Dials Market, 3 min walk

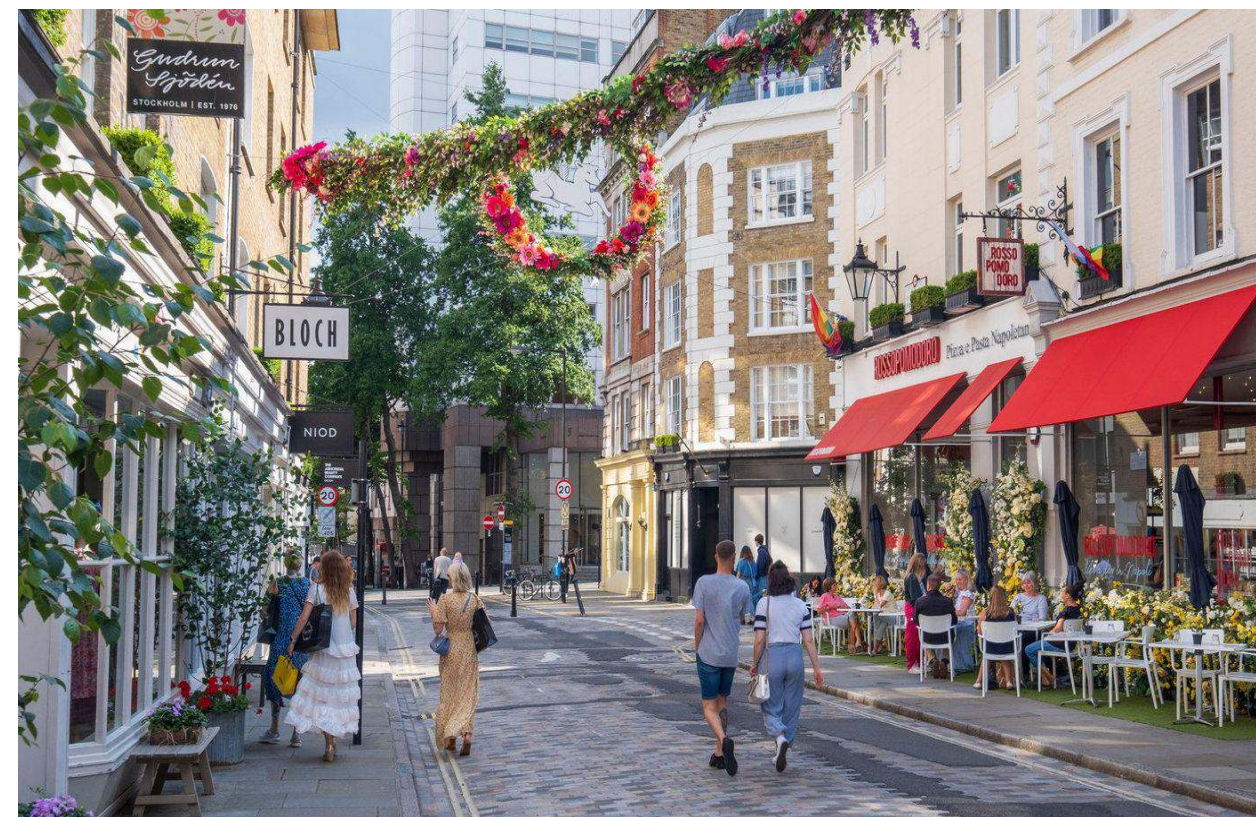
Tucked away but full of life, the cobbled streets of Seven Dials are a village-like haven in the fast-paced heart of central London. Together with the vibrant Covent Garden neighbourhood, this local area offers seemingly countless big-name retail brands, concept stores and independent boutiques alongside delectable dining destinations, sparkling bars and artisan cafés.



Caravan, 2 min walk



St John Bakery, 2 min walk



Monmouth Street, 3 min walk

# LIVE IN THE SPOTLIGHT

## FOOD + DRINK

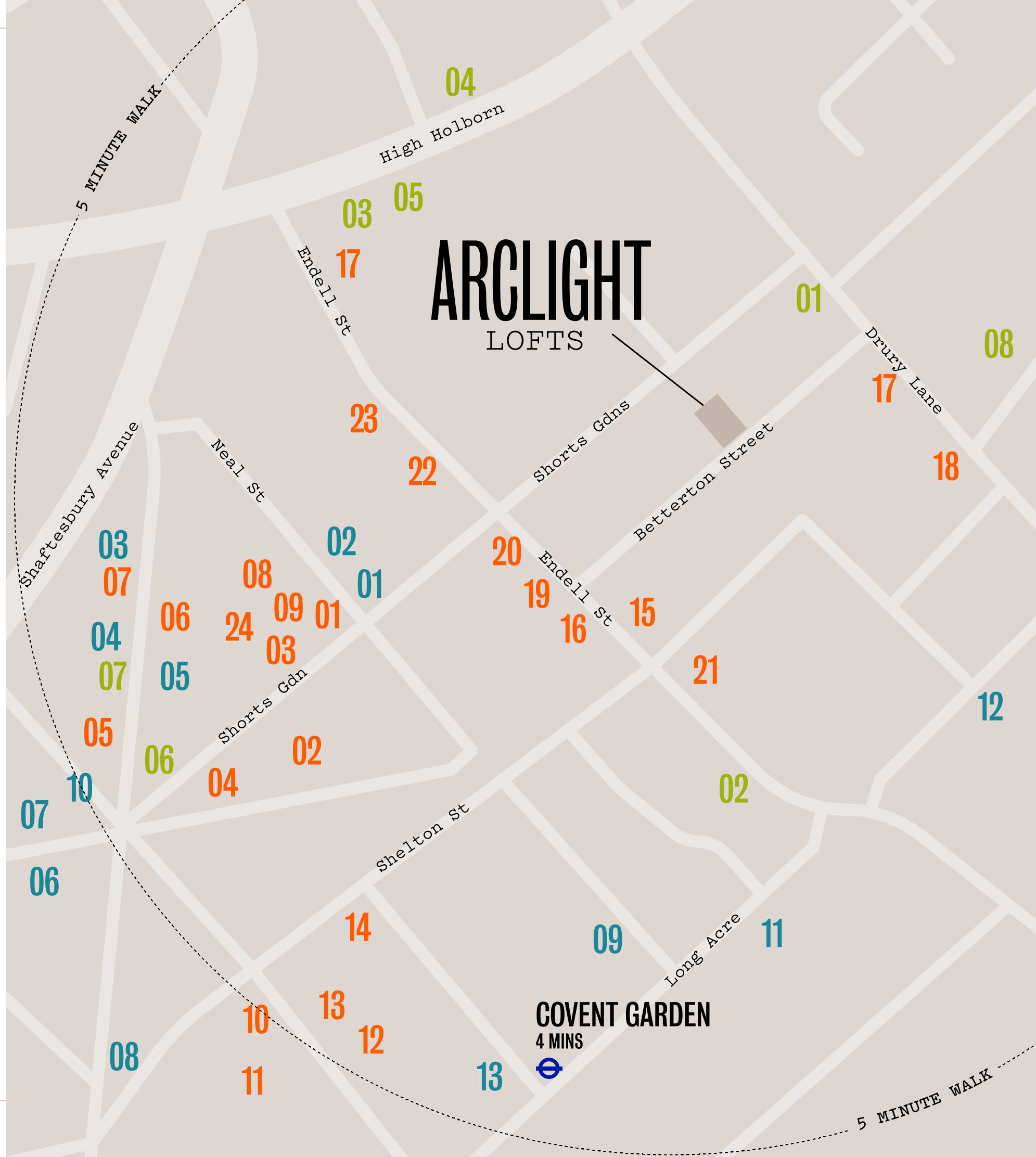
- 01 Ole & Steen
- 02 Seven Dials Market
- 03 Story Cellar
- 04 The Escapologist Bar
- 05 Monmouth Kitchen
- 06 Monmouth Coffee
- 07 Brasserie Max
- 08 St. John Bakery
- 09 The Barbary
- 10 Dishoom
- 11 Dalla Terra Wine Bar
- 12 Temper
- 13 Le Bab
- 14 Hawksmoor
- 15 The 10 Cases
- 16 Banh Mi Aha!
- 17 Caravan
- 18 Redemption Roasters
- 19 Circus
- 20 Parsons
- 21 Baudry Greene
- 22 Bab Mansour
- 23 Da Mario
- 24 26 Grains

## RETAIL

- 01 Birkenstock
- 02 Sakare
- 03 MALIN+GOETZ
- 04 Aesop
- 05 Kiehl's
- 06 Rains
- 07 Carhartt WIP Store
- 08 The Ordinary
- 09 Space NK
- 10 Axel Arigato
- 11 Zara
- 12 Brompton
- 13 Uniqlo

## LIFESTYLE

- 01 Top Secret Comedy Club
- 02 Nuffield Health
- 03 Oasis Sports Centre
- 04 1 Rebel
- 05 Aveda Salon & Spa
- 06 Cambridge Theatre
- 07 Covent Garden Hotel
- 08 The Garden Cinema





Redemption Roasters, 2 min walk



The Cheese Bar, 3 min walk



Neal Street, 1 min walk



Story Cellar, 1 min walk



Neal's Yard, 3 min walk

# CONNECTIVITY


## WALK TO STATION

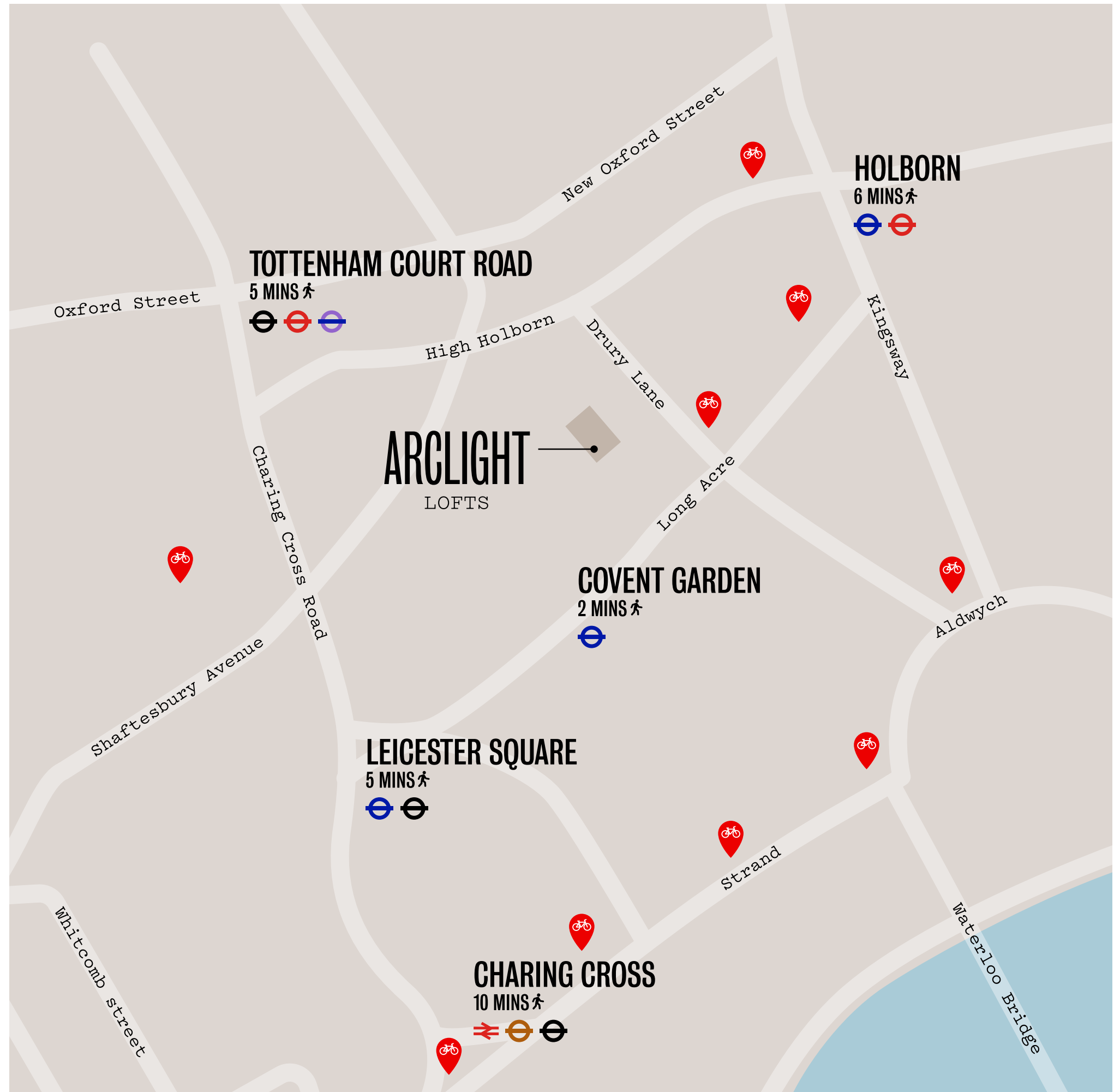
- Covent Garden ————— 2 mins
- Tottenham Court Rd ————— 5 mins
- Leicester Square ————— 5 mins
- Holborn ————— 6 mins
- Charing Cross ————— 10 mins

## CYCLE

- Waterloo ————— 5 mins
- Farringdon ————— 10 mins
- King's Cross ————— 10 mins
- London Bridge ————— 10 mins

## KEY

 Santander cycle stations



# APARTMENT FEATURES

South-facing Crittall-style windows.

White oak engineered timber floor throughout the living spaces.

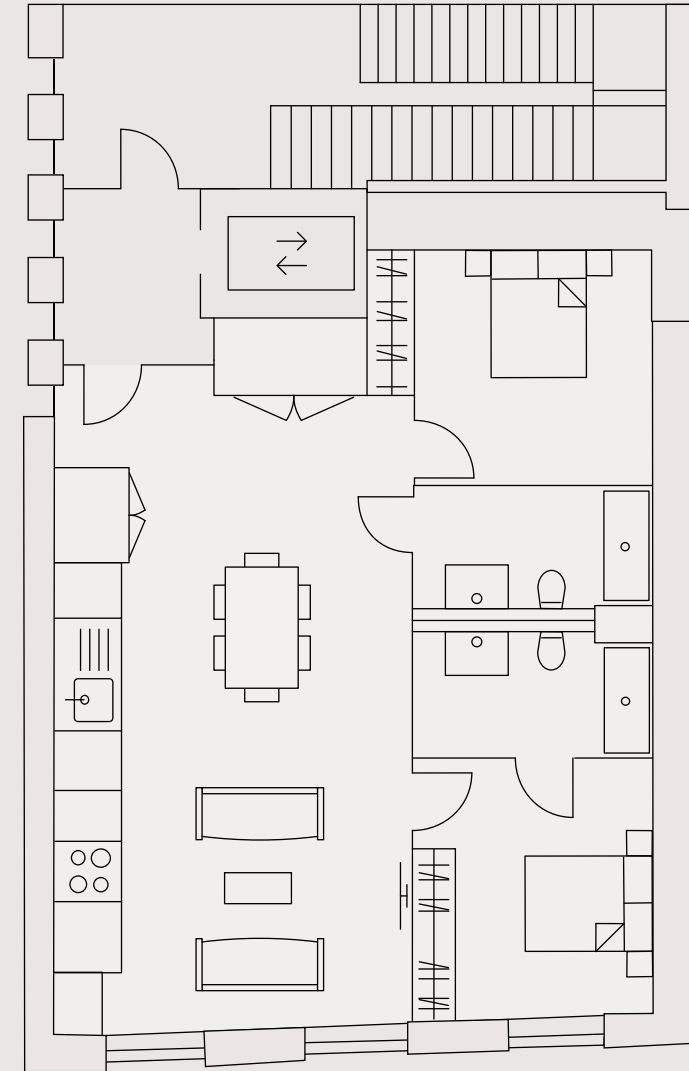
Bespoke kitchen units with Silestone quartz worktops and Siemens appliances.

Wool blend carpeted bedrooms with bespoke joinery.

Generous fitted wardrobes with sliding doors.

Bathrooms with mosaic stone tiles and contemporary Hansgrohe brassware.



Climate control system with smart controls, complemented by dry underfloor heating.



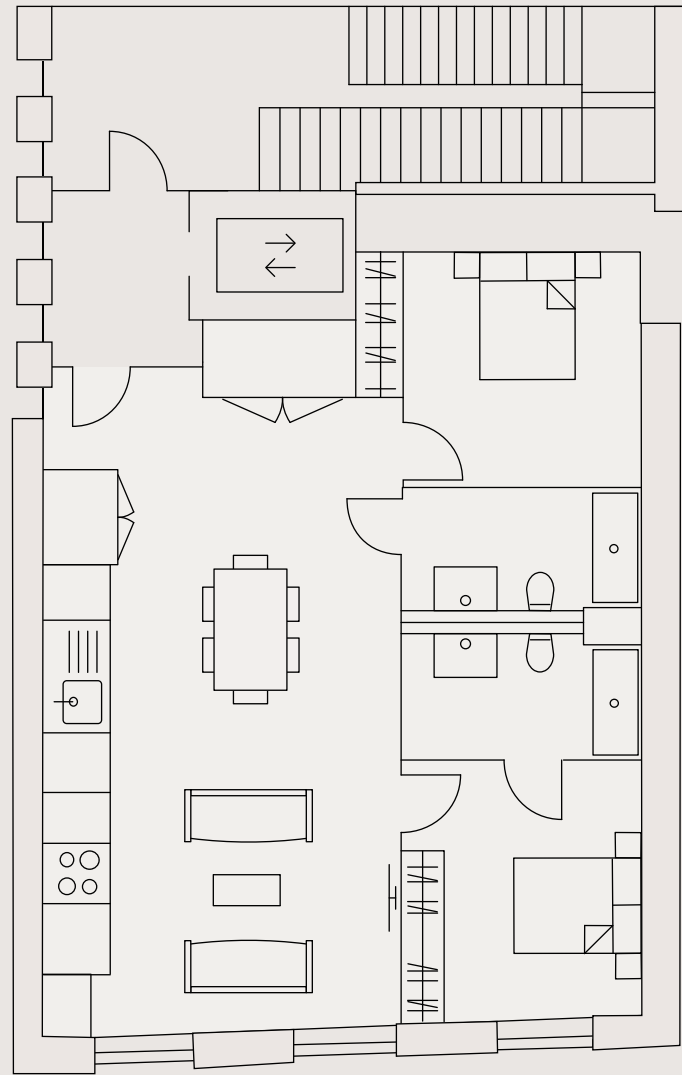
1st Floor

## LOFT 1

1,124 SQ FT / 104.4 SQ M

 2 Bedrooms  
 2 Bathrooms





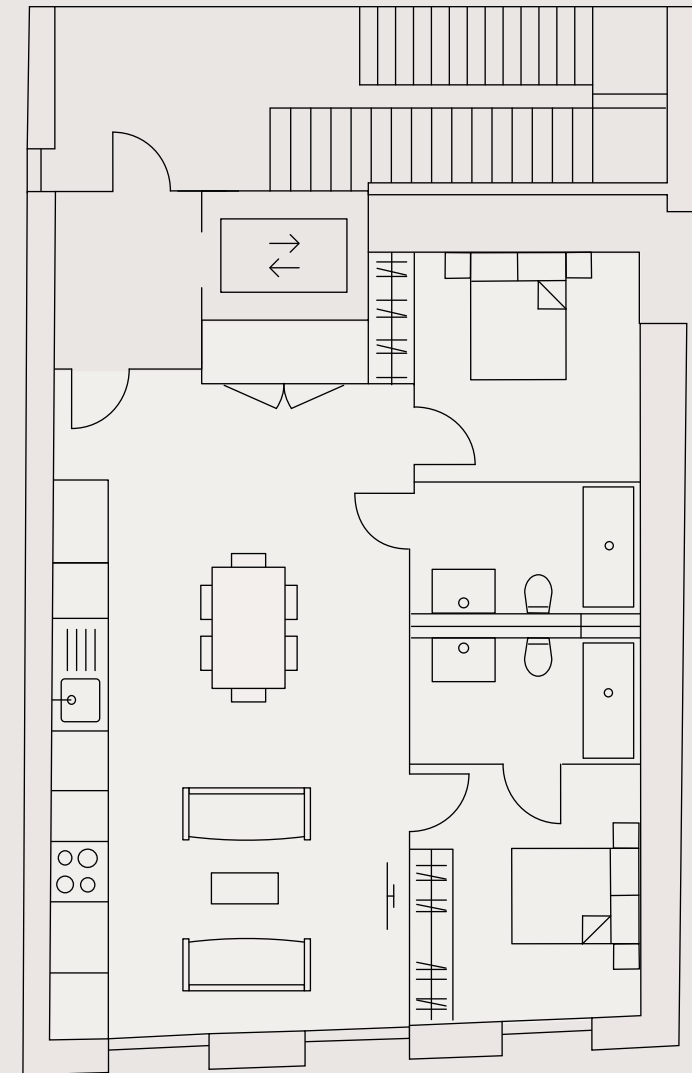


2nd Floor

## LOFT 2

1,119 SQ FT / 104 SQ M



-  2 Bedrooms
-  2 Bathrooms

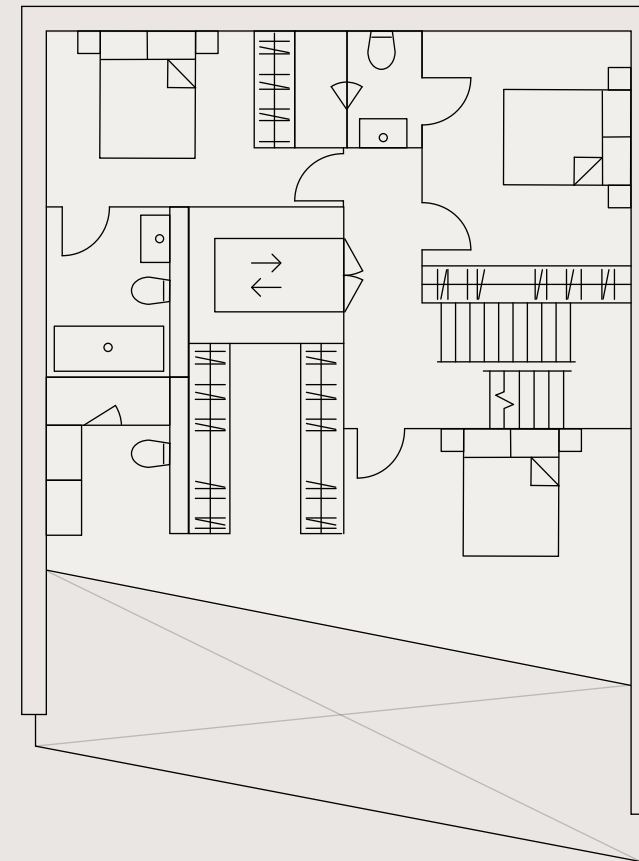
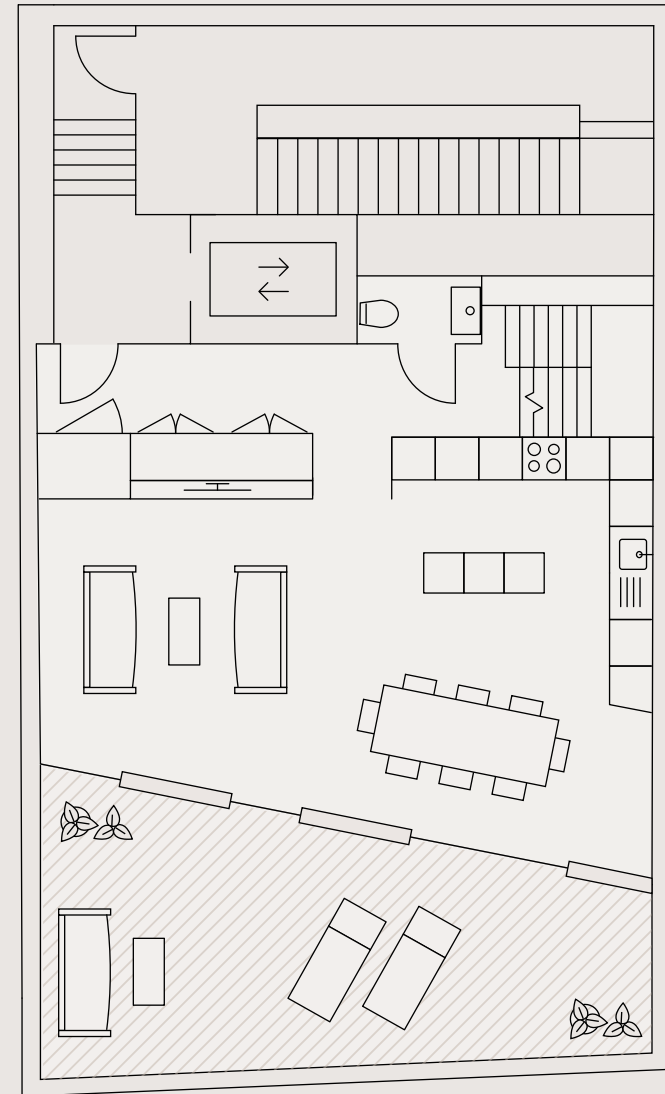


3rd Floor

## LOFT 3

1,169 SQ FT / 108.6 SQ M

-  2 Bedrooms
-  2 Bathrooms




4th & 5th Floor

# THE PENTHOUSE

1,845 SQ FT / 171.4 SQ M

 3 Bedrooms

 3 Bathrooms

 1 Terrace

 1 Guest cloakroom

# ARCLIGHT

## LOFTS

*tavistockbow*

Craig Simpson  
craig@tavistockbow.com  
+44 7707 840 613

tavistockbow.com

**Knight  
Frank** 

Jonathan Fieldman  
Jonathan.Fieldman@knightfrank.com  
+44 7971 060 538

knightfrank.com

MISREPRESENTATION ACT DISCLAIMER: Tavistock Bow & Knight Frank ('The Agents') for themselves and for the vendor(s) of this property whose agents they are, give notice that: 1. These particulars do not constitute, nor constitute any part of, an offer or contract. 2. None of the statements contained in these particulars as to the property are to be relied on as statements or representations of fact. 3. Any intending purchaser or lessee must satisfy themselves by inspection or otherwise as to the correctness of each of the statements contained in these particulars. 4. The vendor(s) do not make or give and neither The Agents nor any person in their employment has any authority to make or give any representation or warranty whatever in relation to this property. Finance Act 1989: Unless otherwise stated all prices and rents are quote exclusive of VAT. Property Misdescriptions Act 1991 & Consumer Protection from Unfair Trading Regulations 2008: These details are believed to be correct at the time of compilation but may be subject to subsequent amendment.