



Southampton Street, Covent Garden, London WC2E



The Beecham, Covent Garden WC2E

This lateral apartment is situated on the third floor of a landmark building with an abundance of natural light throughout. A stately double door entrance leads onto a marble covered lobby serviced by a lift, reflecting the uncompromising approach to quality that is evident throughout.

The grand entrance leads to the vast reception room and kitchen with large windows providing unparalleled views and light. Accommodation further consists of two large double bedrooms, both of which have polished marble en suite bathrooms, and the principal bedroom which benefits from access to a south-facing terrace.



Guide price: £4,650,000

Tenure: Leasehold: approximately 988 years remaining

Service charge: £19,844 per annum, reviewed every year, next review due 2025

Ground rent: Peppercorn

Local authority: City of Westminster

Council tax band: H





Location

The Beecham apartments stand in a privileged position within London's classic and contemporary cultural scene. They are situated on the corner of Southampton Street, across the Piazza from The Royal Opera House.

Excellent local transport links include Covent Garden and Leicester Square underground stations, both of which are within close proximity to the building. There are numerous world-famous restaurants, shops and theatres within walking distance, allowing residents to enjoy Covent Garden as a vibrant world-class district.







VyTA

3HenriettaSt.

Restaurants
Cafes & Bars

PIVOT
AWARDED 1 STAR

FISH & BIRCH
AWARDED 1 STAR

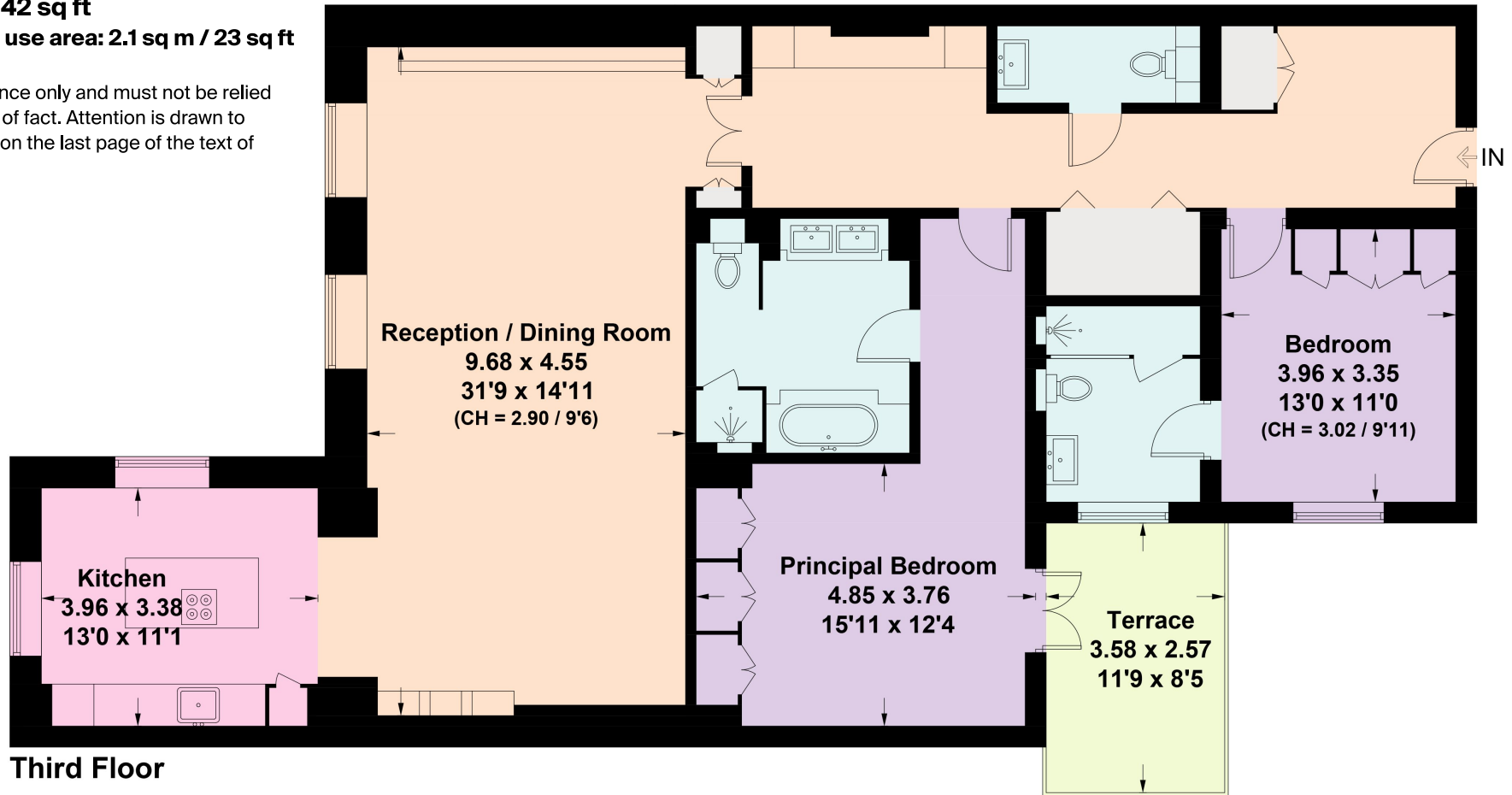


Approximate Gross Internal Floor Area

152.6 sq m / 1,642 sq ft

Including limited use area: 2.1 sq m / 23 sq ft

This plan is for guidance only and must not be relied upon as a statement of fact. Attention is drawn to the important notice on the last page of the text of the Particulars.



Knight Frank
Mayfair
120a Mount Street
London W1K 3NN

[knightfrank.co.uk](https://www.knightfrank.co.uk)

I would be delighted to tell you more
Jonathan Fieldman
+44 20 7647 6615
jonathan.fieldman@knightfrank.com



Fixtures and fittings: A list of the fitted carpets, curtains, light fittings and other items fixed to the property which are included in the sale (or may be available by separate negotiation) will be provided by the Seller's Solicitors.

Important Notice: 1. Particulars: These particulars are not an offer or contract, nor part of one. You should not rely on statements by Knight Frank LLP in the particulars or by word of mouth or in writing ("information") as being factually accurate about the property, its condition or its value. Neither Knight Frank LLP nor any joint agent has any authority to make any representations about the property, and accordingly any information given is entirely without responsibility on the part of the agents, seller(s) or lessor(s). 2. Photos, Videos etc: The photographs, property videos and virtual viewings etc. show only certain parts of the property as they appeared at the time they were taken. Areas, measurements and distances given are approximate only. 3. Regulations etc: Any reference to alterations to, or use of, any part of the property does not mean that any necessary planning, building regulations or other consent has been obtained. A buyer or lessee must find out by inspection or in other ways that these matters have been properly dealt with and that all information is correct. 4. VAT: The VAT position relating to the property may change without notice. 5. To find out how we process Personal Data, please refer to our Group Privacy Statement and other notices at <https://www.knightfrank.com/legals/privacy-statement>.

Particulars dated July 2024. Photographs and videos dated July 2024.

All information is correct at the time of going to print. Knight Frank is the trading name of Knight Frank LLP. Knight Frank LLP is a limited liability partnership registered in England and Wales with registered number OC305934. Our registered office is at 55 Baker Street, London W1U 8AN. We use the term 'partner' to refer to a member of Knight Frank LLP, or an employee or consultant. A list of members names of Knight Frank LLP may be inspected at our registered office. If you do not want us to contact you further about our services then please contact us by either calling 020 3544 0692, email to marketing.help@knightfrank.com or post to our UK Residential Marketing Manager at our registered office (above) providing your name and address.