



Hydawn,  
Nr Alresford  
Hampshire





## Contemporary house in elevated, rural setting.



Hydawn is 2.7 miles to the east of Alresford, a well known and popular Georgian market town with a range of independent shops and restaurants. Winchester is about 11 miles away and has wider range of facilities. Independent schools in the area include Prince's Mead, Twyford, The Pilgrims' School, St Swithun's and Winchester College. Recreational facilities include Alresford Golf Club, tennis courts and a football pitch at the Arlebury Park Recreation Ground. There is chalk stream fishing on the Rivers Itchen and Test, and the south coast is famed for its sailing. Trains from Winchester take from 58 minutes to London Waterloo.

For sale freehold.





Built in 2016, Hydawn is a spectacular modern home designed around an open plan living area with floor to ceiling windows with views over surrounding countryside.

The main living area includes a sitting room and dining area with woodburner and a beautifully fitted cream kitchen with an island unit. The principal bedroom has an en suite bathroom, fitted wardrobes and a sliding door to the garden. There are two further double bedrooms, a shower/utility room and separate study.

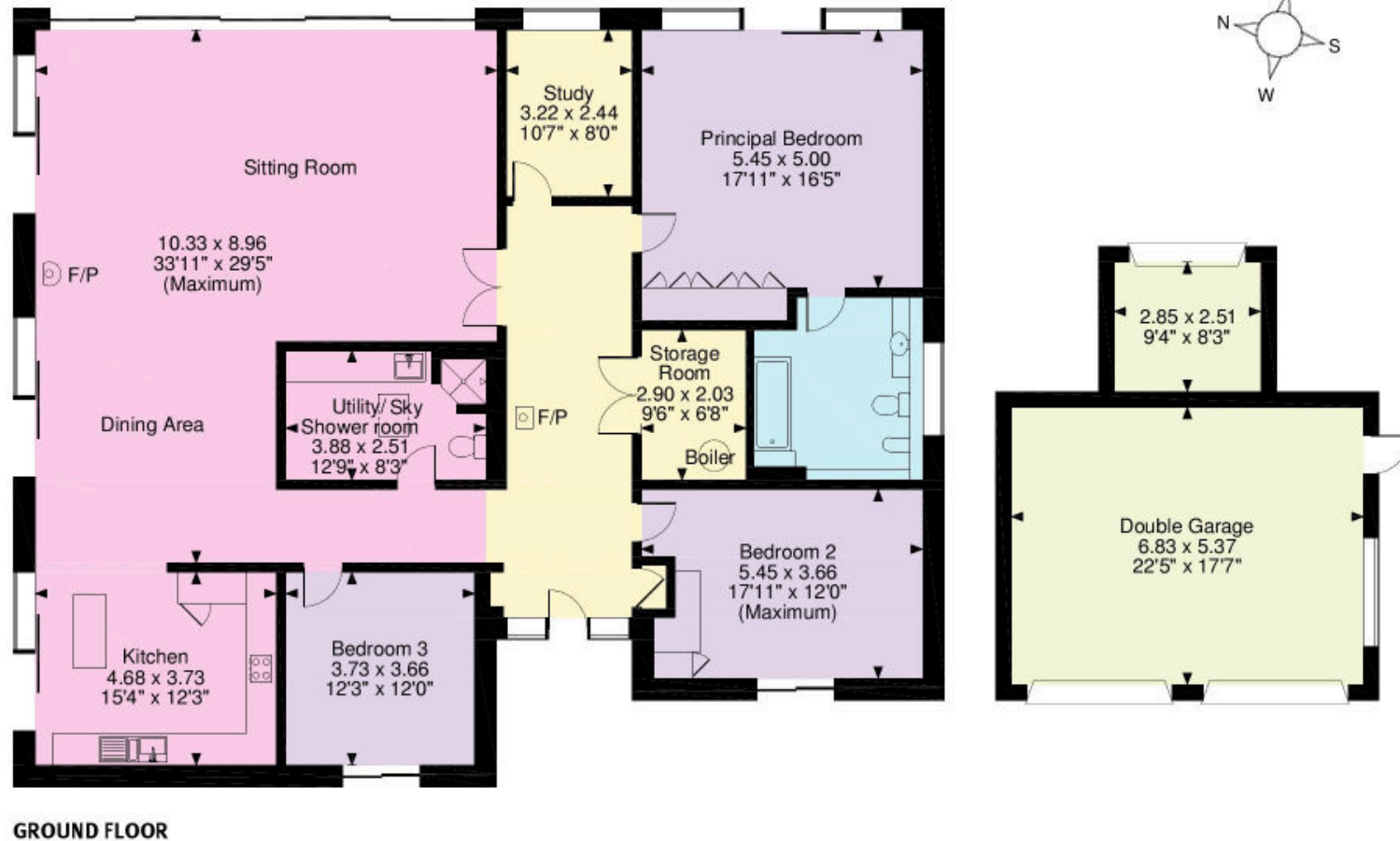
The property is approached via wooden gates and a drive to the secure double garage fitted with remote control roller shutter steel doors. The garden is mainly laid to lawn with mature trees and hedging.

Services: mains water, private drainage, mains electricity.



*Directions (SO24 9SP)*  
From the A31 turn opposite the Ropley Shell Garage into Brighton Hill Road, following the continuation into Sutton Wood Lane for approximately 1 mile before turning left into Goscombe Lane, Hydawn is the third property on the left after approximately 200 metres.

**Goscombe Lane, Gundleton, Alresford**  
**APPROXIMATE GROSS INTERNAL FLOOR AREA**  
**Main House = 226sq.m (2,437sq.ft)**  
**Garage = 37sq.m (395sq.ft)**  
**External Room = 7sq.m (77sq.ft)**



Knight Frank

Winchester  
SO23 8RZ

[knightfrank.co.uk](https://www.knightfrank.co.uk)

**I would be delighted to tell you more.**

**George Clarendon MRICS**  
01962 677234  
[george.clarendon@knightfrank.com](mailto:george.clarendon@knightfrank.com)



**Connecting people & property, perfectly.**

Fixtures and fittings: A list of the fitted carpets, curtains, light fittings and other items fixed to the property which are included in the sale (or may be available by separate negotiation) will be provided by the Seller's Solicitors.

Important Notice: 1. Particulars: These particulars are not an offer or contract, nor part of one. You should not rely on statements by Knight Frank LLP in the particulars or by word of mouth or in writing ("information") as being factually accurate about the property, its condition or its value. Neither Knight Frank LLP nor any joint agent has any authority to make any representations about the property, and accordingly any information given is entirely without responsibility on the part of the agents, seller(s) or lessor(s). 2. Photos, Videos etc: The photographs, property videos and virtual viewings etc. show only certain parts of the property as they appeared at the time they were taken. Areas, measurements and distances given are approximate only. 3. Regulations etc: Any reference to alterations to, or use of, any part of the property does not mean that any necessary planning, building regulations or other consent has been obtained. A buyer or lessee must find out by inspection or in other ways that these matters have been properly dealt with and that all information is correct. 4. VAT: The VAT position relating to the property may change without notice. 5. To find out how we process Personal Data, please refer to our Group Privacy Statement and other notices at <https://www.knightfrank.com/legals/privacy-statement>.

Particulars and photographs dated November 2020.

Knight Frank is the trading name of Knight Frank LLP. Knight Frank LLP is a limited liability partnership registered in England and Wales with registered number OC305934. Our registered office is at 55 Baker Street, London W1U 8AN where you may look at a list of members' names. If we use the term 'partner' when referring to one of our representatives, that person will either be a member, employee, worker or consultant of Knight Frank LLP and not a partner in a partnership. If you do not want us to contact you further about our services then please contact us by either calling 020 3544 0692, email to [marketing.help@knightfrank.com](mailto:marketing.help@knightfrank.com) or post to our UK Residential Marketing Manager at our registered office (above) providing your name and address.