

Pier Reach

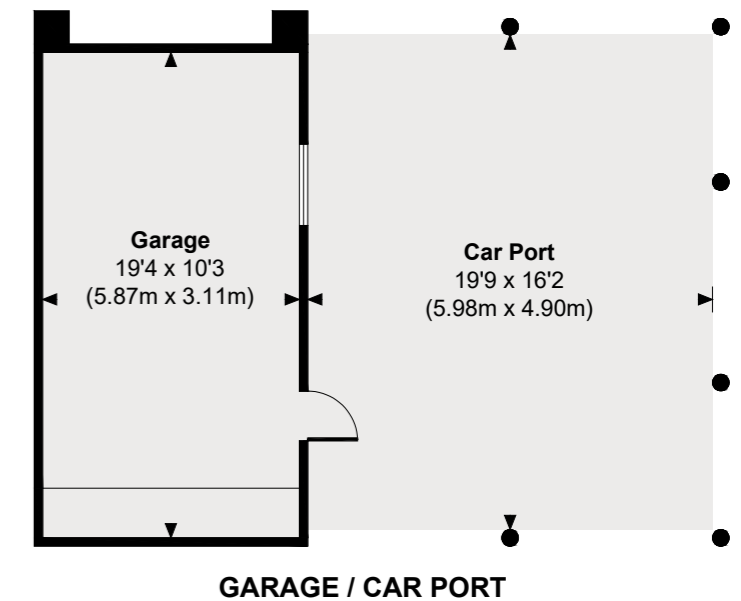
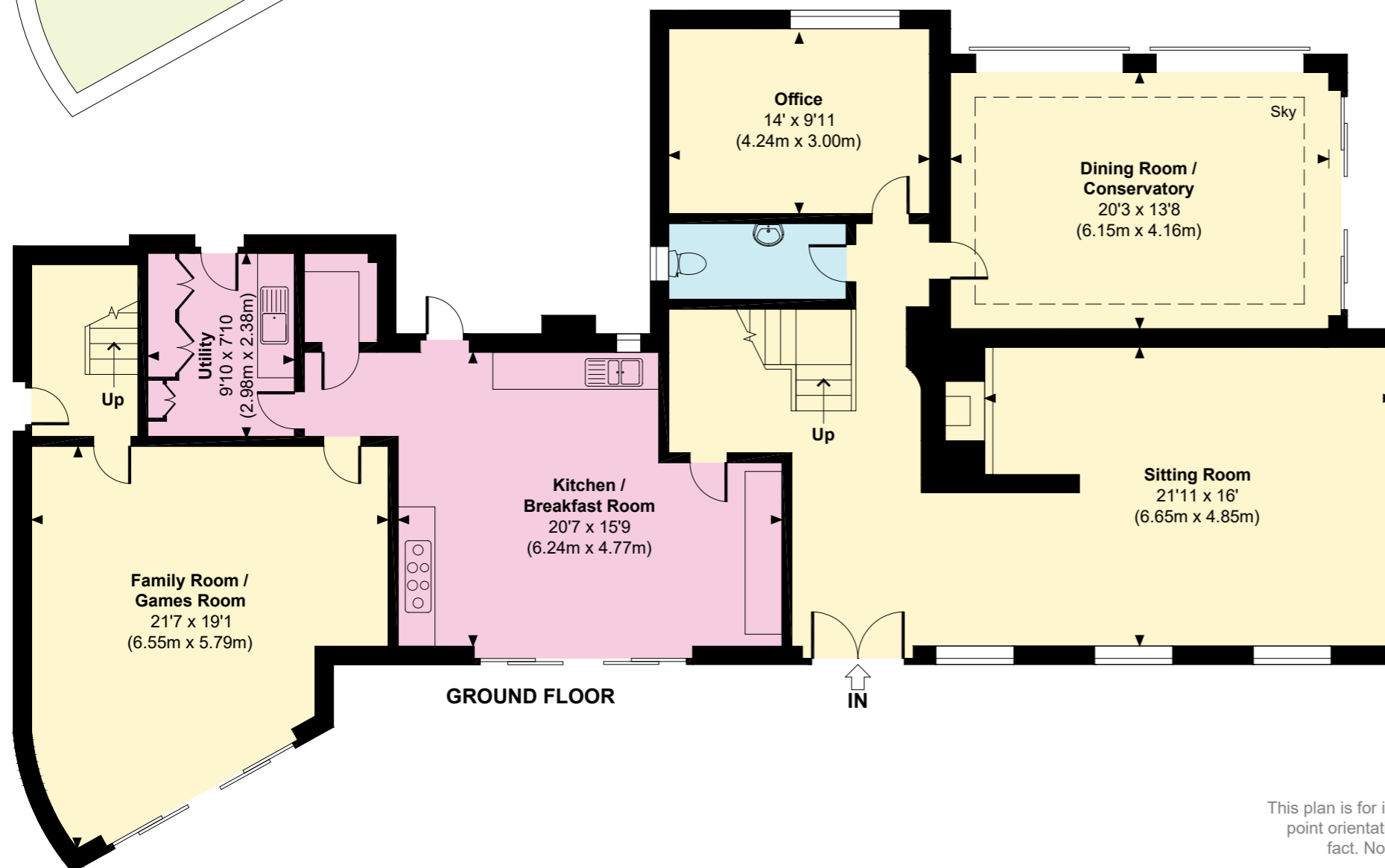
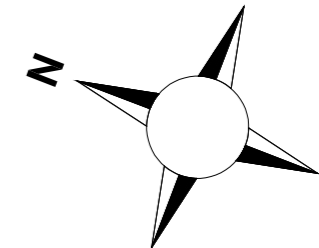
Approximate Gross Internal Area

Main House = 3540 Sq Ft / 328.85 Sq M

Garage / Car Port = 518 Sq Ft / 48.13 Sq M

Total = 4058 Sq Ft / 376.98 Sq M

Outbuildings are not shown in correct orientation or location.



© www.propertyfocus.co | Professional Property Photography & Floorplans

This plan is for illustrative purposes only and is not to scale. If specified, the Gross Internal Area (GIA), dimensions, North point orientation and the size and placement of features are approximate and should not be relied on as a statement of fact. No guarantee is given for the GIA and no responsibility is taken for any error, omission or misrepresentation.