



SHOOTASH FARM

Romsey, Hampshire



SHOOTASH FARM NR ROMSEY, HAMPSHIRE

An attractive, spacious home of over 3800 sq ft in a peaceful, elevated position with far-reaching west and south-westerly views to enjoy year-round sunsets.



Local Authority: Test Valley Borough Council

Council Tax band: G

Tenure: Freehold

Outline planning permission to convert the barn into two dwellings

Guide Price: £1,950,000

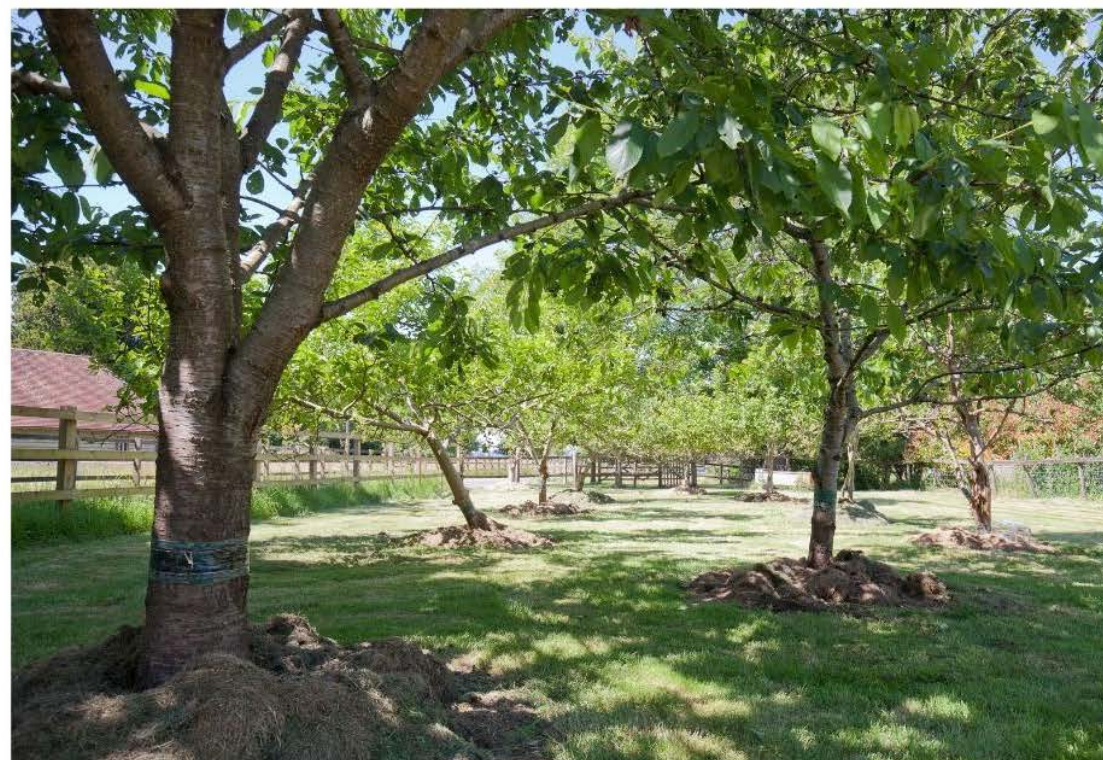


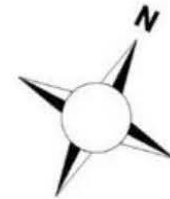
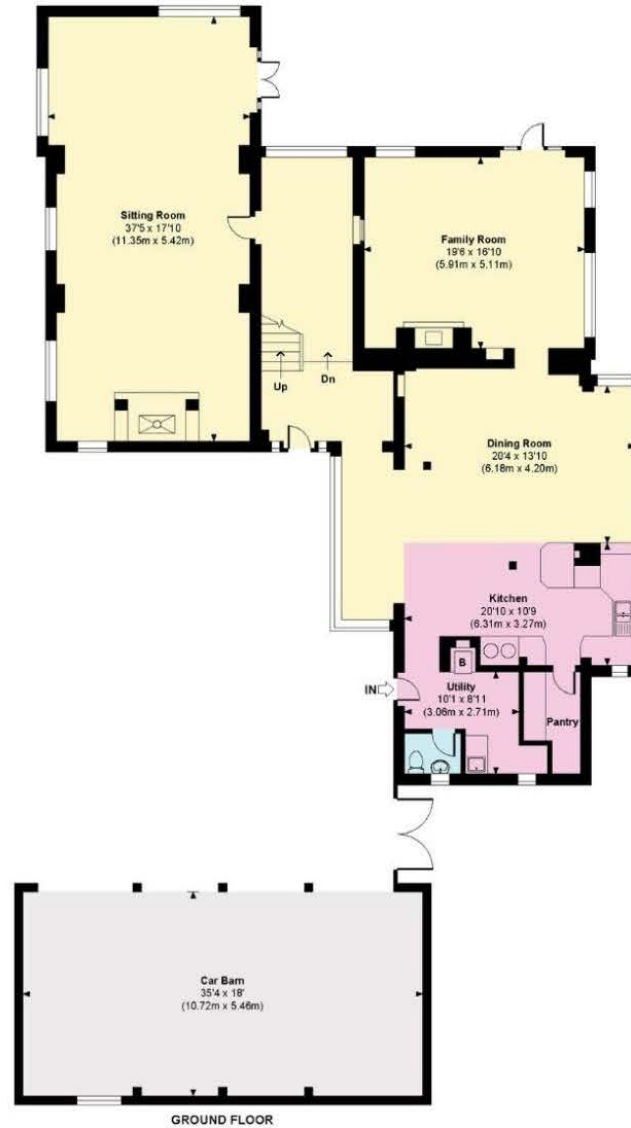
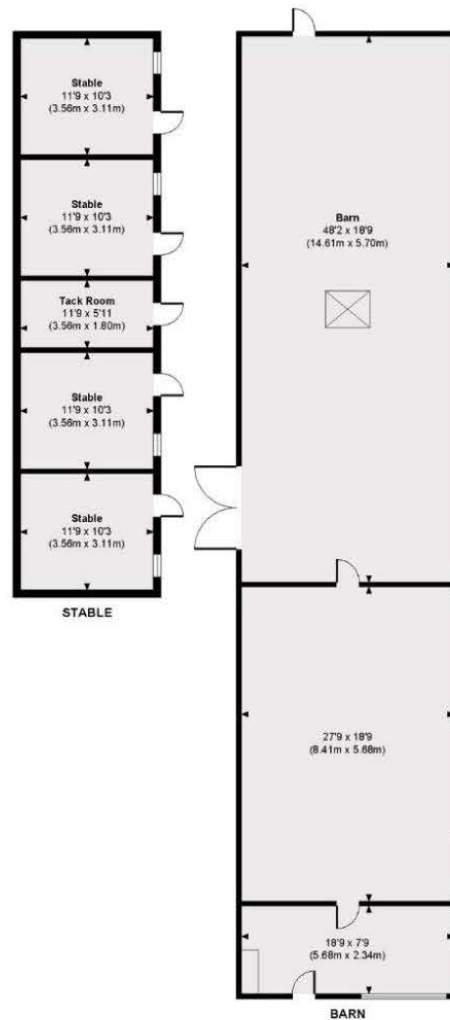
SHOOTASH FARM NR ROMSEY, HAMPSHIRE

Accessed by a gravel drive off Frenches Lane, the house enjoys a secluded setting with expansive western and southwestern views, which are beautifully captured by the main rooms. The ground floor is made up of generously proportioned rooms with a triple aspect sitting room to one side with French doors leading to a south-facing terrace. The large farmhouse kitchen, with Aga, is open plan to include the dining room. The remainder of the ground floor is made up of a family room, utility room, cloakroom and pantry. Upstairs six bedrooms and three bathrooms (1 en suite). The gardens are mainly laid to lawn with mature shrub and flower borders, and terraces to enjoy the sun throughout the day. There is a kitchen garden and orchard, a barn of over 1500 sq ft (with outline planning permission to convert into 2 dwellings), stable block, log store and car barn. The land extends to about 5.5 acres.









Shootash Farm

Approximate Gross Internal Area
 Main House = 3853 Sq Ft / 357.93 Sq M
 Car Barn = 630 Sq Ft / 58.53 Sq M
 Barn = 1572 Sq Ft / 146.03 Sq M
 Stable = 566 Sq Ft / 52.58 Sq M
 Log Store = 339 Sq Ft / 31.57 Sq M
 Total = 6960 Sq Ft / 646.64 Sq M

Outbuildings are not shown in correct orientation or location.
 Includes areas with restricted room height but excludes void.



This plan is for layout guidance only. Not drawn to scale unless stated. Windows and door openings are approximate. Whilst every care is taken in the preparation of this plan, please check all dimensions, shapes and compass bearings before making any decisions reliant upon them. (ID767266)

We would be delighted
to tell you more.

Ed Hunt
01962 677236
edward.hunt@knightfrank.com

Knight Frank Winchester
14-15 Jewry Street
Winchester, SO23 8RZ

knightfrank.co.uk

Your partners in property

1. Particulars: These particulars are not an offer or contract, nor part of one. You should not rely on statements given by Knight Frank in the particulars, by word of mouth or in writing ("information") as being factually accurate about the property, its condition or its value. Neither Knight Frank nor any joint agent has any authority to make any representations about the property, and accordingly any information given is entirely without responsibility on the part of Knight Frank. 2. Material Information: Please note that the material information is provided to Knight Frank by third parties and is provided here as a guide only. While Knight Frank has taken steps to verify this information, we advise you to confirm the details of any such material information prior to any offer being submitted. If we are informed of changes to this information by the seller or another third party, we will use reasonable endeavours to update this as soon as practical. 3. Photos, Videos etc: The photographs, property videos and virtual viewings etc. show only certain parts of the property as they appeared at the time they were taken. Areas, measurements and distances given are approximate only. 4. Regulations etc: Any reference to alterations to, or use of, any part of the property does not mean that any necessary planning, building regulations or other consent has been obtained. A buyer must find out by inspection or in other ways that these matters have been properly dealt with and that all information is correct. 5. Fixtures and fittings: A list of the fitted carpets, curtains, light fittings and other items fixed to the property which are included in the sale (or may be available by separate negotiation) will be provided by the Seller's Solicitors. 6. VAT: The VAT position relating to the property may change without notice. 7. To find out how we process Personal Data, please refer to our Group Privacy Statement and other notices at <https://www.knightfrank.com/legals/privacy-statement>.

Particulars dated January 2026. Photographs dated June 2024. All information is correct at the time of going to print. Knight Frank is the trading name of Knight Frank LLP. Knight Frank LLP is a limited liability partnership registered in England and Wales with registered number OC305934. Our registered office is at 55 Baker Street, London W1U 8AN. We use the term 'partner' to refer to a member of Knight Frank LLP, or an employee or consultant. A list of members names of Knight Frank LLP may be inspected at our registered office. If you do not want us to contact you further about our services then please contact us by either calling 020 3544 0692, email to marketing.help@knightfrank.com or post to our UK Residential Marketing Manager at our registered office (above) providing your name and address.