

# Oakwood House

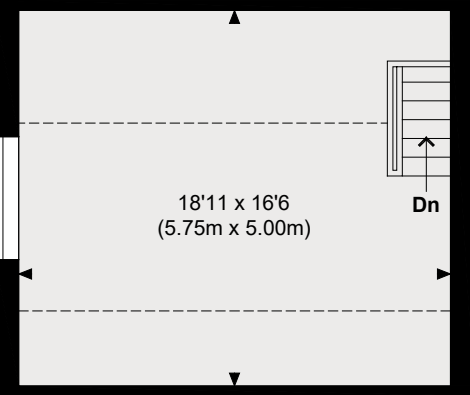
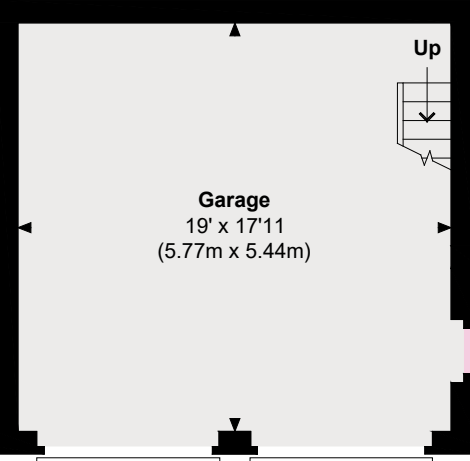
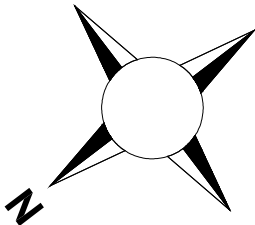
Approximate Gross Internal Area

Main House = 4344 Sq Ft / 403.58 Sq M

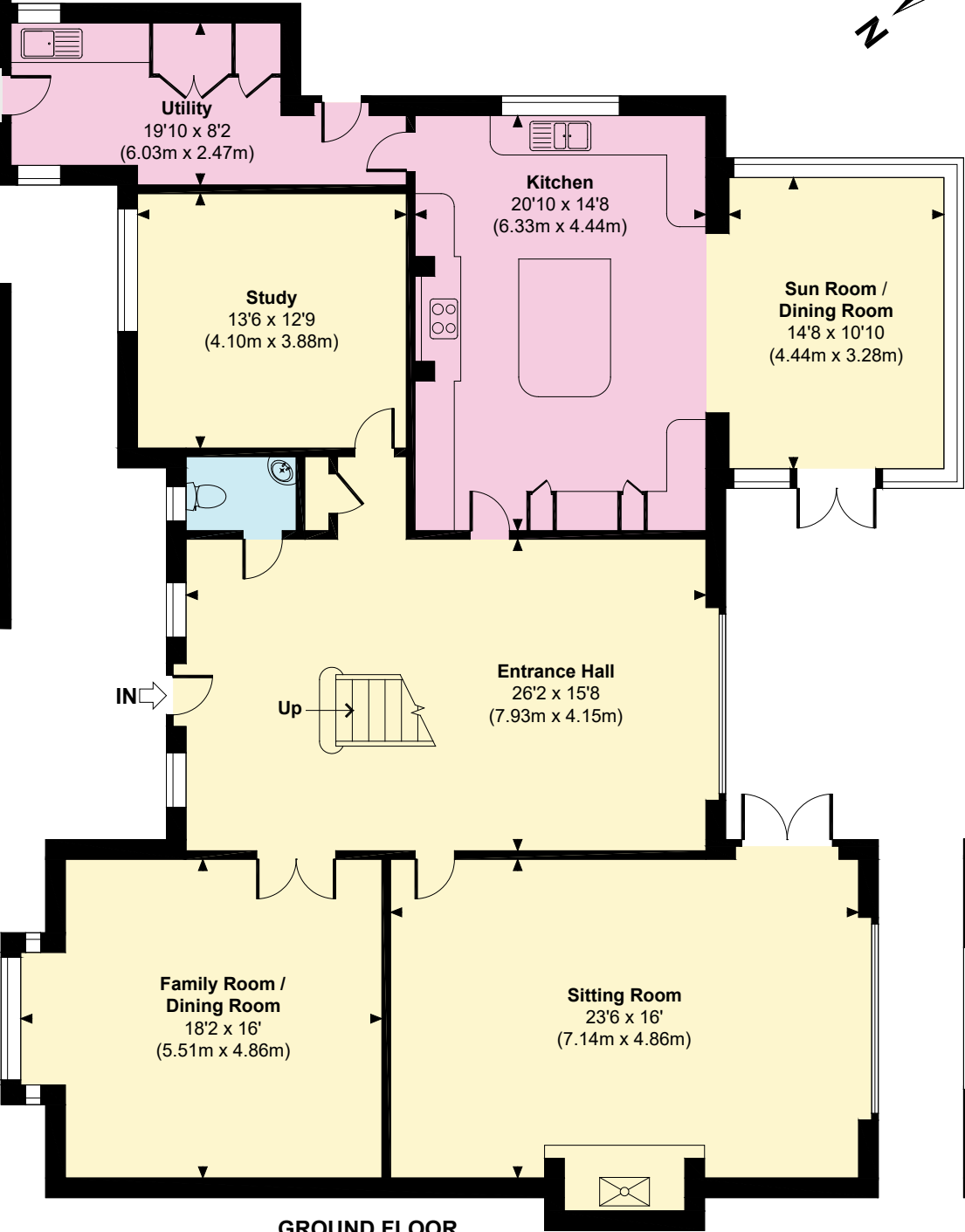
Garage = 659 Sq Ft / 61.25 Sq M

Total = 5003 Sq Ft / 464.83 Sq M

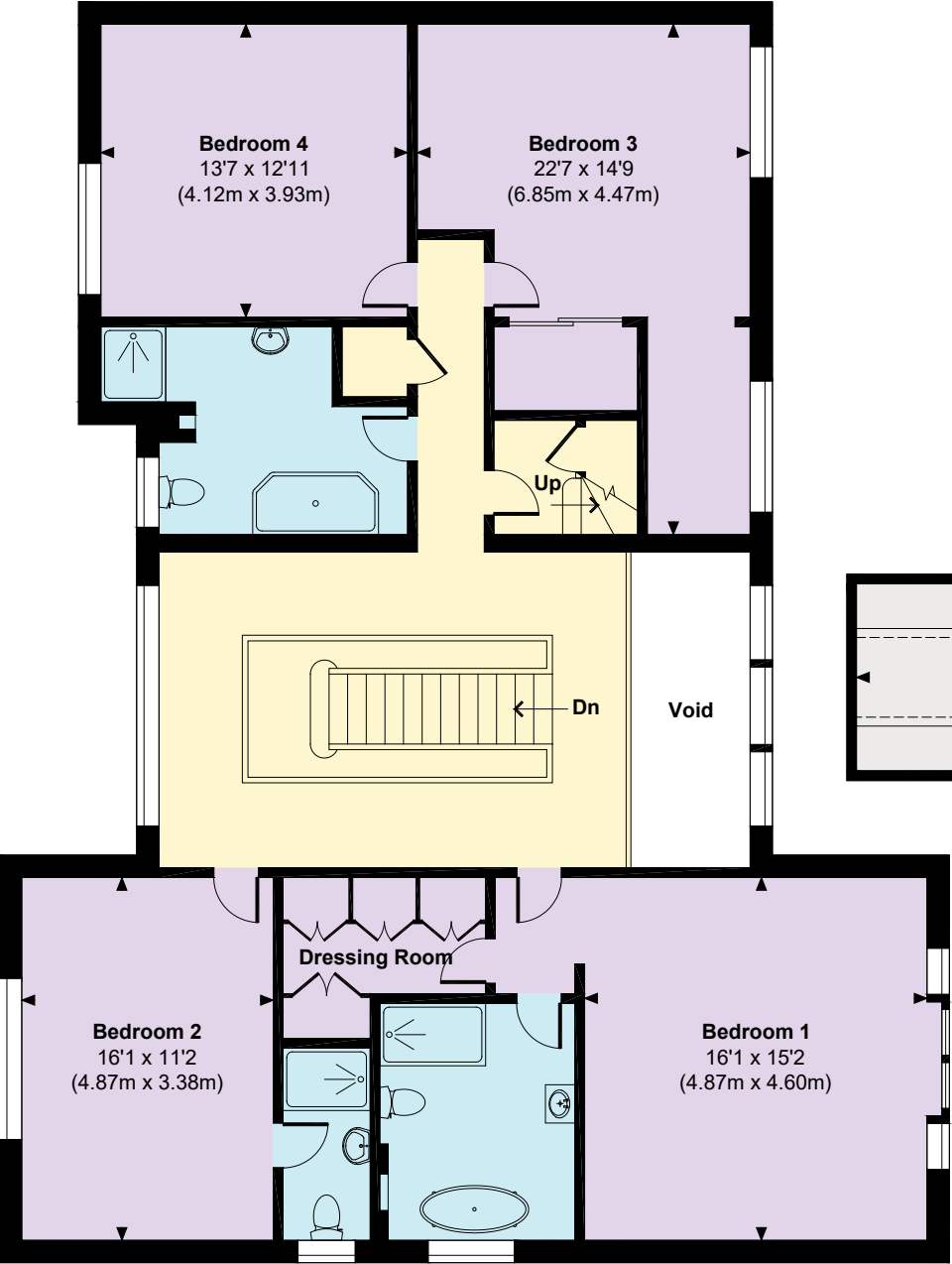
Outbuildings are not shown in correct orientation or location.  
Includes areas with restricted room height but excludes void.



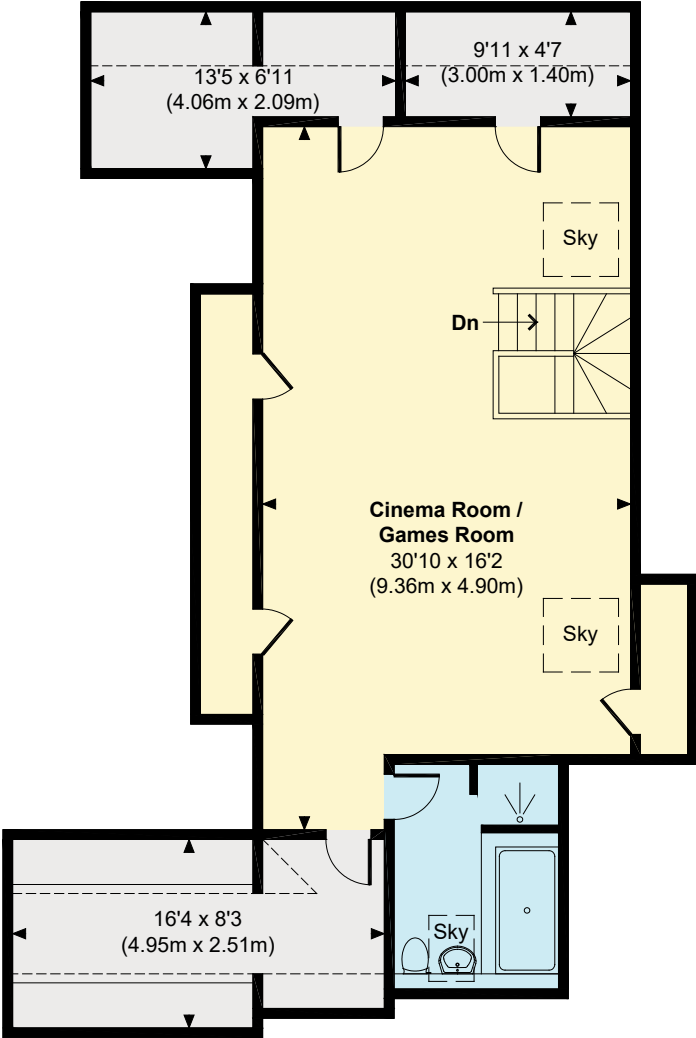
GARAGE FIRST FLOOR



GROUND FLOOR



FIRST FLOOR



SECOND FLOOR

 Indicates restricted room height less than 1.5m.



© [www.propertyfocus.co](http://www.propertyfocus.co) | Professional Property Photography & Floorplans

This plan is for illustrative purposes only and is not to scale. If specified, the Gross Internal Area (GIA), dimensions, North point orientation and the size and placement of features are approximate and should not be relied on as a statement of fact. No guarantee is given for the GIA and no responsibility is taken for any error, omission or misrepresentation.