



THE GRANARY, CRAWLEY

Winchester, Hampshire



CRAWLEY, WINCHESTER

The current owners have recently undergone a schedule of works to refurbish and extended the property to create a flexible, open-plan living space ideal for a family or entertaining, all of which is finished to the highest of standards.



3



2



1

EPC

C

Local Authority: Winchester City Council

Council Tax band: G

Tenure: Freehold

Guide price: £1,600,000



A CONTEMPORARY, HIGHLY REFURBISHED FAMILY HOUSE LOCATED IN THE SOUGHT-AFTER VILLAGE OF CRAWLEY.

A brick and flint entrance hall welcomes you into the property. Leading into a modern drawing room with double French doors out to the garden terrace. Flowing into the sitting room, featuring two bay windows and an impressive centre fireplace. Double sliding doors provide access into the open plan and newly fitted kitchen, which has been recently extended to create a contemporary dining room with skylights and French doors out to the garden. A downstairs cloakroom and storage cupboards complete the rest of the ground floor. The property's first floor features a large principal bedroom with a dual aspect view, vaulted open beam ceiling and a well-appointed en suite shower room. Additionally, there are two further bedrooms and a beautiful family bathroom. The property's private, gated driveway has ample parking. The south-facing rear garden, with a garden studio ideal for a home office. Mostly laid to lawn with mature trees and laurel creating privacy and a garden terrace.







The Granary

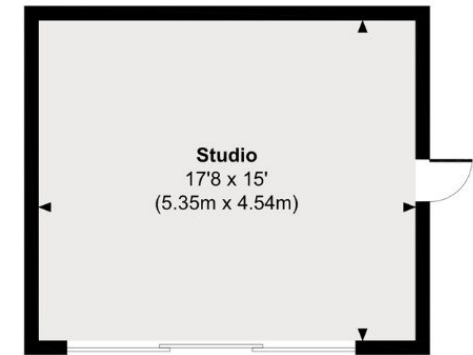
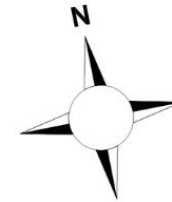
Approximate Gross Internal Area

Main House = 2404 Sq Ft / 223.34 Sq M

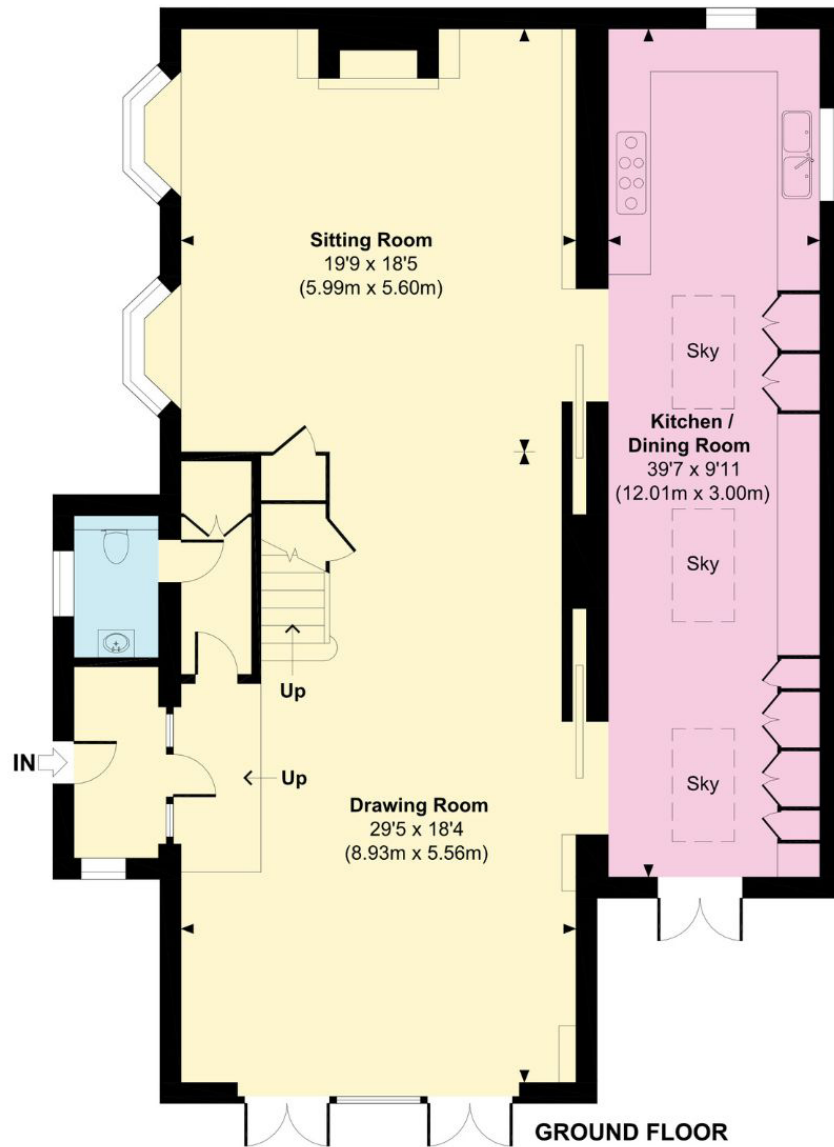
Studio = 262 Sq Ft / 24.29 Sq M

Total = 2666 Sq Ft / 247.63 Sq M

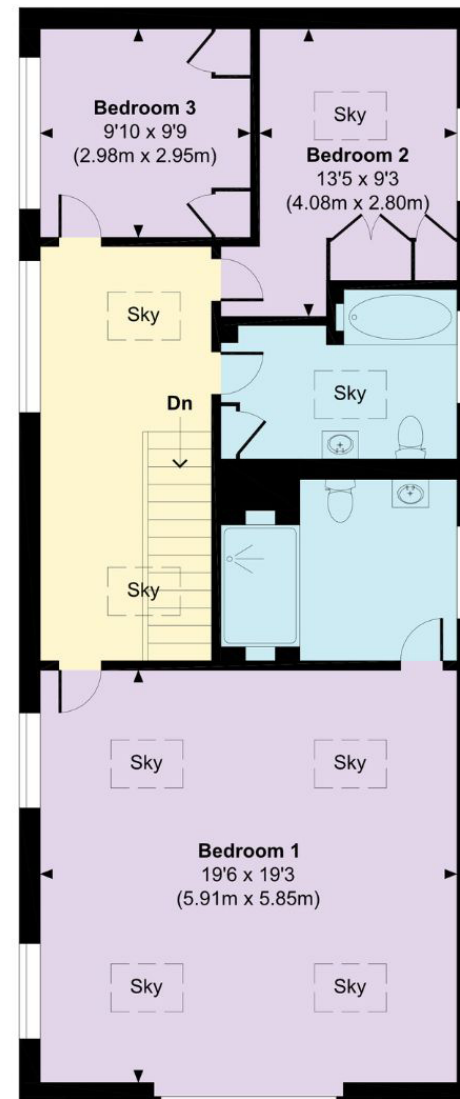
Outbuildings are not shown
in correct orientation or location.



STUDIO



FIRST FLOOR



Approximate Gross Internal Area = 247.63 sq m / 2666 sq ft

This plan is for layout guidance only. Not drawn to scale unless stated. Windows and door openings are approximate. Whilst every care is taken in the preparation of this plan, please check all dimensions, shapes and compass bearings before making any decisions reliant upon them. (ID767266)

We would be delighted
to tell you more.

Ed Hunt
01962 677236
edward.hunt@knightfrank.com

Knight Frank Winchester
14-15 Jewry Steet, Winchester
SO23 8RZ

knightfrank.co.uk

Your partners in property

1. Particulars: These particulars are not an offer or contract, nor part of one. You should not rely on statements given by Knight Frank in the particulars, by word of mouth or in writing ("information") as being factually accurate about the property, its condition or its value. Neither Knight Frank nor any joint agent has any authority to make any representations about the property, and accordingly any information given is entirely without responsibility on the part of Knight Frank. 2. Material Information: Please note that the material information is provided to Knight Frank by third parties and is provided here as a guide only. While Knight Frank has taken steps to verify this information, we advise you to confirm the details of any such material information prior to any offer being submitted. If we are informed of changes to this information by the seller or another third party, we will use reasonable endeavours to update this as soon as practical. 3. Photos, Videos etc: The photographs, property videos and virtual viewings etc. show only certain parts of the property as they appeared at the time they were taken. Areas, measurements and distances given are approximate only. 4. Regulations etc: Any reference to alterations to, or use of, any part of the property does not mean that any necessary planning, building regulations or other consent has been obtained. A buyer must find out by inspection or in other ways that these matters have been properly dealt with and that all information is correct. 5. Fixtures and fittings: A list of the fitted carpets, curtains, light fittings and other items fixed to the property which are included in the sale (or may be available by separate negotiation) will be provided by the Seller's Solicitors. 6. VAT: The VAT position relating to the property may change without notice. 7. To find out how we process Personal Data, please refer to our Group Privacy Statement and other notices at <https://www.knightfrank.com/legals/privacy-statement>.

Particulars dated Sept 2025 .Photographs and videos dated Sept 2025.. All information is correct at the time of going to print. Knight Frank is the trading name of Knight Frank LLP. Knight Frank LLP is a limited liability partnership registered in England and Wales with registered number OC305934. Our registered office is at 55 Baker Street, London W1U 8AN. We use the term 'partner' to refer to a member of Knight Frank LLP, or an employee or consultant. A list of members names of Knight Frank LLP may be inspected at our registered office. If you do not want us to contact you further about our services then please contact us by either calling 020 3544 0692, email to marketing.help@knightfrank.com or post to our UK Residential Marketing Manager at our registered office (above) providing your name and address.