



Putney Bridge Road, Putney, London SW18



Putney Bridge Road, London SW18

Located within walking distance to the River Thames, this superb first floor apartment provides 885 sq ft of lateral space. Upon entering the flat, there is a large open-plan kitchen, living and dining area with two Juliet balconies overlooking Wandsworth Park. There are two generous double bedrooms (one en suite) and a separate bathroom. This bright and spacious apartment has been beautifully upgraded by the current owner to include wooden flooring throughout, a new kitchen and refurbished bathrooms. The apartment has double glazed windows and ample storage space.

The flat further benefits from private gated parking for the property and visitor parking, communal gardens and is share of freehold.



Guide price: 675,000

Tenure: Available Share of freehold

Service charge: £3,400 per annum, reviewed yearly

Local authority: London Borough of Wandsworth

Council tax band: F

Location

Putney Bridge Road runs parallel to the River Thames alongside Wandsworth Park and connects to Putney High Street. East Putney and Putney Bridge underground (District Line), Putney mainline and the River Boat service are close by, as are numerous bus links.



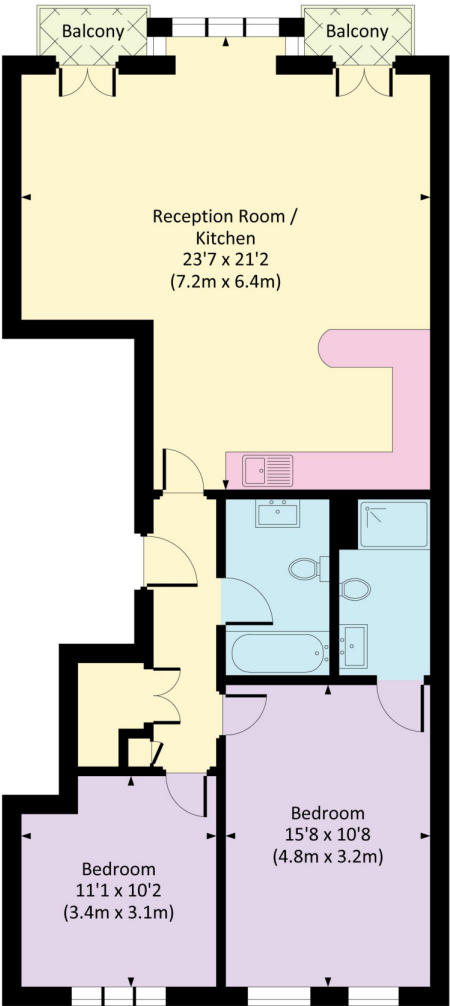


Overlooking
Wandsworth Park.



PUTNEY BRIDGE ROAD, SW18

Approx. gross internal area
885 Sq Ft. / 82.2 Sq M.



FIRST FLOOR

This plan is for guidance only and must not be relied upon as a statement of fact. Attention is drawn to the important notice on the last page of the text of the Particulars.



All measurements have been made in accordance with RICS code of Measuring Practice which are approximate only and only for illustrative purposes. For the avoidance of doubt, Dowling Jones Design shall not be liable for any reliance on these measurements. © 2023 www.dowlingjones.com 020 7610 9933



Knight Frank
Wimbledon
58 High Street,
Wimbledon
London SW19 5EE
knightfrank.co.uk

We would be delighted to tell you more
Charlotte Mantle
020 3823 9255
charlotte.mantle@knightfrank.com

Fixtures and fittings: A list of the fitted carpets, curtains, light fittings and other items fixed to the property which are included in the sale (or may be available by separate negotiation) will be provided by the Seller's Solicitors.
Important Notice: 1. Particulars: These particulars are not an offer or contract, nor part of one. You should not rely on statements by Knight Frank LLP in the particulars or by word of mouth or in writing ("information") as being factually accurate about the property, its condition or its value. Neither Knight Frank LLP nor any joint agent has any authority to make any representations about the property, and accordingly any information given is entirely without responsibility on the part of the agents, seller(s) or lessor(s). 2. Photos, Videos etc: The photographs, property videos and virtual viewings etc. show only certain parts of the property as they appeared at the time they were taken. Areas, measurements and distances given are approximate only. 3. Regulations etc: Any reference to alterations to, or use of, any part of the property does not mean that any necessary planning, building regulations or other consent has been obtained. A buyer or lessee must find out by inspection or in other ways that these matters have been properly dealt with and that all information is correct. 4. VAT: The VAT position relating to the property may change without notice. 5. To find out how we process Personal Data, please refer to our Group Privacy Statement and other notices at <https://www.knightfrank.com/legals/privacy-statement>.
Particulars dated February 2023. Photographs and videos dated February 2023.
Knight Frank is the trading name of Knight Frank LLP. Knight Frank LLP is a limited liability partnership registered in England and Wales with registered number OC305934. Our registered office is at 55 Baker Street, London W1U 8AN where you may look at a list of members' names. If we use the term 'partner' when referring to one of our representatives, that person will either be a member, employee, worker or consultant of Knight Frank LLP and not a partner in a partnership. If you do not want us to contact you further about our services then please contact us by either calling 020 3544 0692, email to marketing.help@knightfrank.com or post to our UK Residential Marketing Manager at our registered office (above) providing your name and address.