

# Glendene, Victoria Drive, Wimbledon SW19

---



# Glendene, Victoria Drive, Wimbledon SW19

A well maintained southwest-facing four bedroom penthouse apartment in Wimbledon for sale with far-reaching views over the All England Lawn Tennis Club and Wimbledon Park.



**Guide price:** £1,500,000

**Tenure:** Leasehold: approximately 976 years remaining

**Service charge:** £8,161 per annum, paid in two tranches, reviewed every year, next review due 2025

**Local authority:** London Borough of Wandsworth

**Council tax band:** F





## Description

This extraordinary four bedroom, two bathroom 5th floor penthouse apartment has the most beautiful far-reaching 360 degree views across the tennis grounds and Wimbledon Park. There is a lift, and the flat also benefits from a double garage, private communal grounds and the crown jewel, a communal roof terrace with a unique private conservatory, ideal for entertaining and sundowners.

Filled with an abundance of natural light, the spacious layout provides a harmonious blend of sophistication and comfort. A dual-aspect, double reception room emphasises the social element of this home and offers access to a southwest-facing private terrace. It leads through to an attractive fitted kitchen with access to a useful additional reception, currently arranged as a dining room.

There are four well proportioned, bright and airy bedrooms, including an impressive dual-aspect principal suite with ample fitted wardrobes and an en-suite with separate bath and shower enclosure. Also, there is a family bathroom. Overall, this penthouse has a spacious feel and would make a great home.

Throughout this enchanting apartment, the large windows showcase breathtaking views over Wimbledon and London, adding an element of grandeur to the living experience.



## Location

Wimbledon offers a balance between city and country living with easy access to central London. It is close to Wimbledon Park, Wimbledon Common, and the famous All England Lawn Tennis Club. It is perfectly positioned between Wimbledon Village and Southfields, which both offer boutique shops, restaurants, cafes and local schools.

Highly regarded for its association with tennis, Wimbledon has hosted the oldest tennis championship in the world since 1877.

The apartment is just half a mile from Southfields tube station and has convenient amenities, such as local food shops, cafes, and pharmacies. Wimbledon is just 1.5 miles away; this is the only London station with an interchange between rail, Underground and Tramlink services. Transport links to central London are fast and frequent, with regular services to London Waterloo (19 minutes). The District Line provides other options, as well as Thameslink to London Blackfriars and London St. Pancras International for the Eurostar. Wimbledon Park Tube Station (0.9 miles) is also close by.

Wimbledon is renowned for its commitment to educational excellence. The area boasts a world-class reputation for its schools, with notable independent institutions including Kings College School, Wimbledon High School, Putney High School, Wimbledon Common Prep and The Study Prep, all within close proximity, as is Hollymount Primary School. These schools offer a top-tier education that attracts students from around the world, making Wimbledon a hub for academic achievement and intellectual growth.





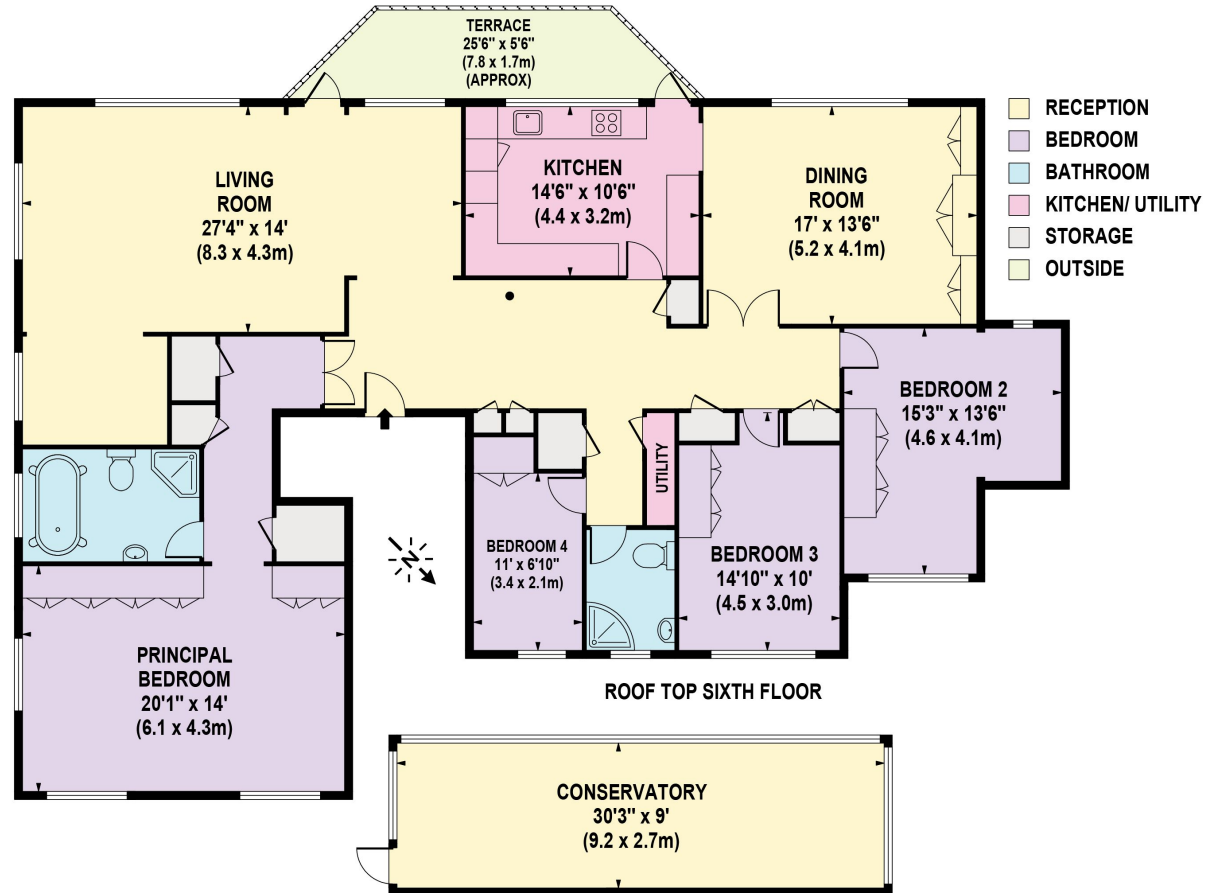




# Glendene, Victoria Drive, Wimbledon SW19

Approx. gross  
internal floor area  
**2,309 sq. ft. /**  
**215 sq. m (including  
conservatory)**

This plan is for guidance only and must not be relied upon as a statement of fact. Attention is drawn to the important notice on the last page of the text of the Particulars.



**Knight Frank**  
Wimbledon  
58 High Street,  
Wimbledon  
London SW19 5EE  
[knightfrank.co.uk](http://knightfrank.co.uk)

I would be delighted to tell you more  
**Christopher Burton FNAEA**  
020 3815 9417  
[chris.burton@knightfrank.com](mailto:chris.burton@knightfrank.com)



Fixtures and fittings: A list of the fitted carpets, curtains, light fittings and other items fixed to the property which are included in the sale (or may be available by separate negotiation) will be provided by the Seller's Solicitors.

Important Notice: 1. Particulars: These particulars are not an offer or contract, nor part of one. You should not rely on statements by Knight Frank LLP in the particulars or by word of mouth or in writing ("information") as being factually accurate about the property, its condition or its value. Neither Knight Frank LLP nor any joint agent has any authority to make any representations about the property, and accordingly any information given is entirely without responsibility on the part of the agents, seller(s) or lessor(s). 2. Photos, Videos etc: The photographs, property videos and virtual viewings etc. show only certain parts of the property as they appeared at the time they were taken. Areas, measurements and distances given are approximate only. 3. Regulations etc: Any reference to alterations to, or use of, any part of the property does not mean that any necessary planning, building regulations or other consent has been obtained. A buyer or lessee must find out by inspection or in other ways that these matters have been properly dealt with and that all information is correct. 4. VAT: The VAT position relating to the property may change without notice. 5. To find out how we process Personal Data, please refer to our Group Privacy Statement and other notices at <https://www.knightfrank.com/legals/privacy-statement>.

Particulars dated March 2024. Photographs and videos dated March 2024.

All information is correct at the time of going to print. Knight Frank is the trading name of Knight Frank LLP. Knight Frank LLP is a limited liability partnership registered in England and Wales with registered number OC305934. Our registered office is at 55 Baker Street, London W1U 8AN. We use the term 'partner' to refer to a member of Knight Frank LLP, or an employee or consultant. A list of members names of Knight Frank LLP may be inspected at our registered office. If you do not want us to contact you further about our services then please contact us by either calling 020 3544 0692, email to [marketing.help@knightfrank.com](mailto:marketing.help@knightfrank.com) or post to our UK Residential Marketing Manager at our registered office (above) providing your name and address.