

Henrietta House, Wimbeldon **SW20**



Henrietta House, Wimbledon SW20

This immaculate three bedroom, three bathroom ground floor apartment with step-free access from the underground parking benefits from an unusually large wraparound south facing terrace and is located in the much sought-after Chambers Park Hill, built by the award winning Berkeley Group.

Maintained to an exceptional standard throughout, the inviting entrance hall leads to a generous contemporary kitchen entertaining area filled with an abundance of natural light and has French doors opening to the secluded terrace.



Guide price: £1,600,000

Tenure: Freehold

Local authority: London Borough of Merton

Council tax band: G







Three well proportioned, bright and airy bedroom all have ample fitted wardrobe space, including a spacious principal suite with a dressing area, a guest suite and a third bedroom benefitting from the family bathroom.

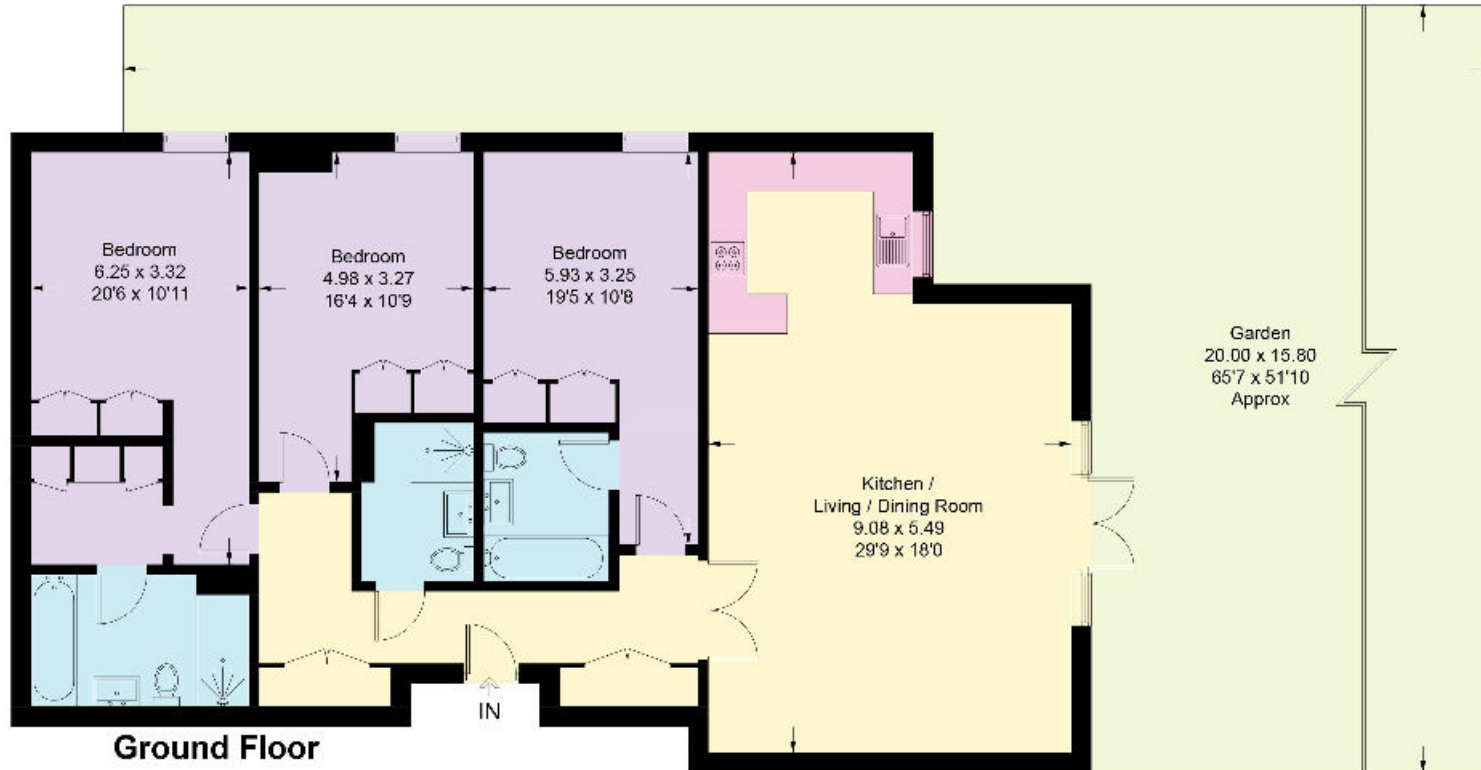
Residents of this brilliant scheme also benefit from a concierge service, well equipped gym, cinema room, board room, well maintained secluded communal gardens and secure underground parking for two cars.

Set back from Copse Hill, Chamber Park Hill is a fantastic modern development built by the award winning Berkeley Group and is located in a convenient location moments from the many amenities of Wimbledon Village and Wimbledon Town Centre.



Henrietta House, SW20

Approximate Gross Internal Area = 129.3 sq m / 1392 sq ft



This plan is for guidance only and must not be relied upon as a statement of fact. Attention is drawn to the important notice on the last page of the text of the Particulars.

Knight Frank
Wimbledon

58 High Street

Wimbledon

SW19 5EE

[knightfrank.co.uk](https://www.knightfrank.co.uk)

I would be delighted to tell you more

Christopher Burton

020 3815 9417

chris.burton@knightfrank.com



Fixtures and fittings: A list of the fitted carpets, curtains, light fittings and other items fixed to the property which are included in the sale (or may be available by separate negotiation) will be provided by the Seller's Solicitors.

Important Notice: 1. Particulars: These particulars are not an offer or contract, nor part of one. You should not rely on statements by Knight Frank LLP in the particulars or by word of mouth or in writing ("information") as being factually accurate about the property, its condition or its value. Neither Knight Frank LLP nor any joint agent has any authority to make any representations about the property, and accordingly any information given is entirely without responsibility on the part of the agents, seller(s) or lessor(s). 2. Photos, Videos etc: The photographs, property videos and virtual viewings etc. show only certain parts of the property as they appeared at the time they were taken. Areas, measurements and distances given are approximate only. 3. Regulations etc: Any reference to alterations to, or use of, any part of the property does not mean that any necessary planning, building regulations or other consent has been obtained. A buyer or lessee must find out by inspection or in other ways that these matters have been properly dealt with and that all information is correct. 4. VAT: The VAT position relating to the property may change without notice. 5. To find out how we process Personal Data, please refer to our Group Privacy Statement and other notices at <https://www.knightfrank.com/legals/privacy-statement>. Particulars dated September 2024. Photographs and videos dated September 2024.

Knight Frank is the trading name of Knight Frank LLP. Knight Frank LLP is a limited liability partnership registered in England and Wales with registered number OC305934. Our registered office is at 55 Baker Street, London W1U 8AN where you may look at a list of members' names. If we use the term 'partner' when referring to one of our representatives, that person will either be a member, employee, worker or consultant of Knight Frank LLP and not a partner in a partnership. If you do not want us to contact you further about our services then please contact us by either calling 020 3544 0692, email to marketing.help@knightfrank.com or post to our UK Residential Marketing Manager at our registered office (above) providing your name and address.