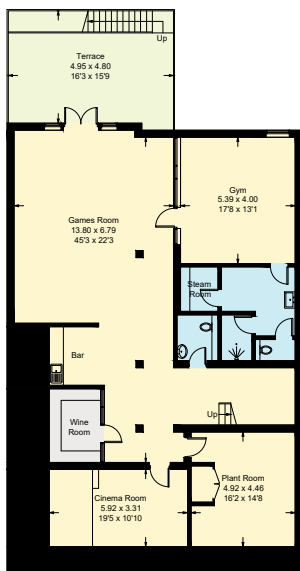


Marryat Road, SW19

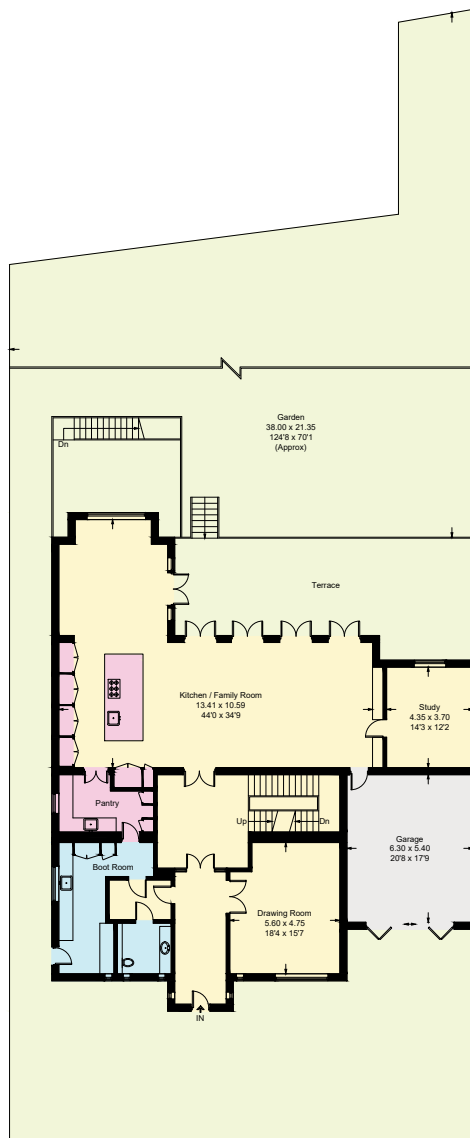
Approximate Gross Internal Area = 773.3 sq m / 8324 sq ft

Eaves Storage = 41.2 sq m / 444 sq ft

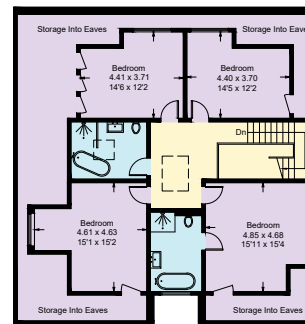
Total = 814.5 sq m / 8768 sq ft



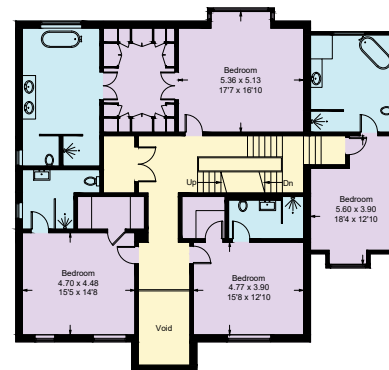
Lower Ground Floor



Ground Floor



Second Floor



First Floor

Illustration for identification purposes only, measurements are approximate, not to scale. Fourlabs.co © (ID1128693)