



South Park Road, Wimbledon **SW19**

The Property

With an ideal blend between high specification family home and retained character features, this immaculate four bedroom, two bathroom south facing family home on the ever popular South Park Road offers spacious living and bedroom accommodation for the growing family moments from Wimbledon Town Centre.

An inviting entrance hall leads to a front aspect reception room with a feature fireplace and through to a full width rear aspect kitchen entertaining area with bi-fold doors opening on to the secluded south facing 80 foot rear garden. There is also a handy separate utility room and a cloak room.

Spread across the upper floors are four well proportioned, bright and airy bedrooms flooded with an abundance of natural light including an impressive principal suite spanning the entire top floor of this fantastic family home with far reaching views.

The secluded south facing rear garden with side access, benefits from a private patio area and is laid mainly to lawn.

Guide Price: £1,500,000

Tenure: Freehold

Local Authority: London Borough of Merton

Council Tax Band: E

EPC: G







Location

Wimbledon (0.7 miles) is the only London station with an interchange between rail, Underground and Tramlink services. Transport links to central London are fast and frequent, with regular services to London Waterloo (19 minutes). Other options are provided by the District Line and also Thameslink to London Blackfriars and London St. Pancras International for the Eurostar. The A3/M25 road network offers excellent access to both Heathrow and Gatwick airports. South Wimbledon Underground Station (0.5 miles) is also nearby and the Northern Line provides direct links Central London.

Wimbledon is renowned for its commitment to educational excellence. The area boasts a world-class reputation for its schools in the private and state sector including Holy Trinity CofE Primary School, St Mary's Catholic Primary School, The Priory CofE School, Pelham Primary School, The Priory CofE School, Willington School, The Study, Wimbledon High and Kings College Junior & Senior School offering a top-tier education that attracts students worldwide, making Wimbledon a hub for academic achievement and intellectual growth.



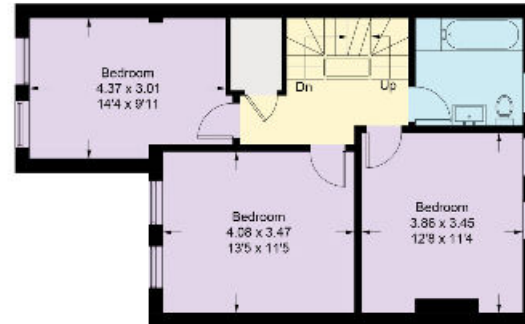
Wimbledon offers a quality off family life more akin to the country than London offering easy access to the High Street and Common. The area includes Georgian, Edwardian and Victorian houses and many green open spaces, including Wimbledon Common and Wimbledon Park. At the heart of Wimbledon Village and Town Centre is a comprehensive range of boutiques, independent retailers, chic restaurants and cafés, including Bliss, XO and the Cheese Cave while there is also easy access to South Park Gardens.

Highly regarded for its association with tennis, Wimbledon has hosted the oldest tennis championship in the world since 1877. Plenty of other leisure facilities abound, including riding stables, golf clubs, tennis courts and other sports clubs.



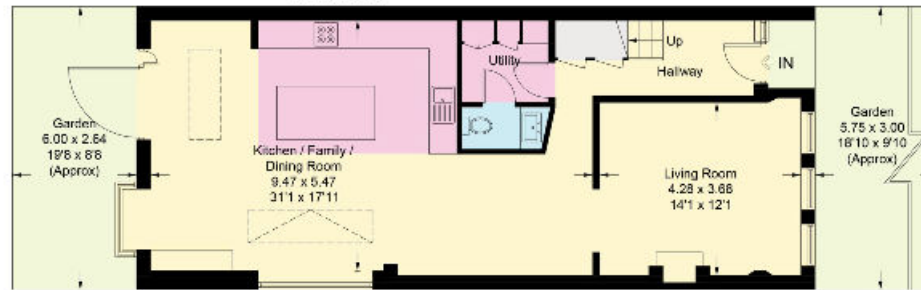
South Park Road, SW19

Approximate Gross Internal Area
Ground Floor = 75.5 sq m / 813 sq ft
First Floor = 57.1 sq m / 615 sq ft
Second Floor = 33.5 sq m / 360 sq ft
(Excluding Reduced Headroom / Eaves)
Reduced Headroom / Eaves = 14.0 sq m / 151 sq ft
Total = 180.1 sq m / 1939 sq ft



This plan is for guidance only and must not be relied upon as a statement of fact. Attention is drawn to the important notice on the last page of the text of the Particulars.

First Floor



Ground Floor



Second Floor

Knight Frank

58 High Street,
Wimbledon
London SW19 5EE
[knightfrank.co.uk](https://www.knightfrank.co.uk)

We would be delighted to tell you more
Christopher Burton FNAEA
020 3815 9417
chris.burton@knightfrank.com



Fixtures and fittings: A list of the fitted carpets, curtains, light fittings and other items fixed to the property which are included in the sale (or may be available by separate negotiation) will be provided by the Seller's Solicitors.

Important Notice: 1. Particulars: These particulars are not an offer or contract, nor part of one. You should not rely on statements by Knight Frank LLP in the particulars or by word of mouth or in writing ("information") as being factually accurate about the property, its condition or its value. Neither Knight Frank LLP nor any joint agent has any authority to make any representations about the property, and accordingly any information given is entirely without responsibility on the part of the agents, seller(s) or lessor(s). 2. Photos, Videos etc: The photographs, property videos and virtual viewings etc. show only certain parts of the property as they appeared at the time they were taken. Areas, measurements and distances given are approximate only. 3. Regulations etc: Any reference to alterations to, or use of, any part of the property does not mean that any necessary planning, building regulations or other consent has been obtained. A buyer or lessee must find out by inspection or in other ways that these matters have been properly dealt with and that all information is correct. 4. VAT: The VAT position relating to the property may change without notice. 5. To find out how we process Personal Data, please refer to our Group Privacy Statement and other notices at <https://www.knightfrank.com/legals/privacy-statement>. Particulars dated June 2024. Photographs and videos dated June 2024.

Knight Frank is the trading name of Knight Frank LLP. Knight Frank LLP is a limited liability partnership registered in England and Wales with registered number OC305934. Our registered office is at 55 Baker Street, London W1U 8AN where you may look at a list of members' names. If we use the term 'partner' when referring to one of our representatives, that person will either be a member, employee, worker or consultant of Knight Frank LLP and not a partner in a partnership. If you do not want us to contact you further about our services then please contact us by either calling 020 3544 0692, email to marketing.help@knightfrank.com or post to our UK Residential Marketing Manager at our registered office (above) providing your name and address.