



KINGSTON VALE

London, SW15



KINGSTON VALE

A stunning newly built five bedroom detached family home,
offering a high specification finish throughout.

			EPC
5	3	2	B
			

Local Authority: London Borough of Kingston Upon Thames
Council Tax band: H
Tenure: Freehold

Guide Price: £2,000,000



ABOUT THE PROPERTY

This newly built five bedroom detached home offers around 3,000 sq ft of luxurious living space across three floors, featuring high end finishes throughout, a landscaped garden, a carriage way driveway, a South East facing rear garden offering all day sun, and top floor views over Wimbledon and Putney Commons.

The ground floor includes a striking entrance hall with a floating oak staircase and statement chandelier, alongside an open-plan kitchen/dining/family area featuring a bespoke handleless kitchen, hidden larder, Bosch appliances, and bi-fold doors. Expansive long windows frame panoramic views and flood the space with natural light, complemented by a Quartz-finished utility room, engineered wood with brass inlay border, and Crittall-partitioned lounge with a double-sided bio-ethanol fireplace.







ARCHITECTURAL ELEGANCE & PREMIUM CRAFTSMANSHIP

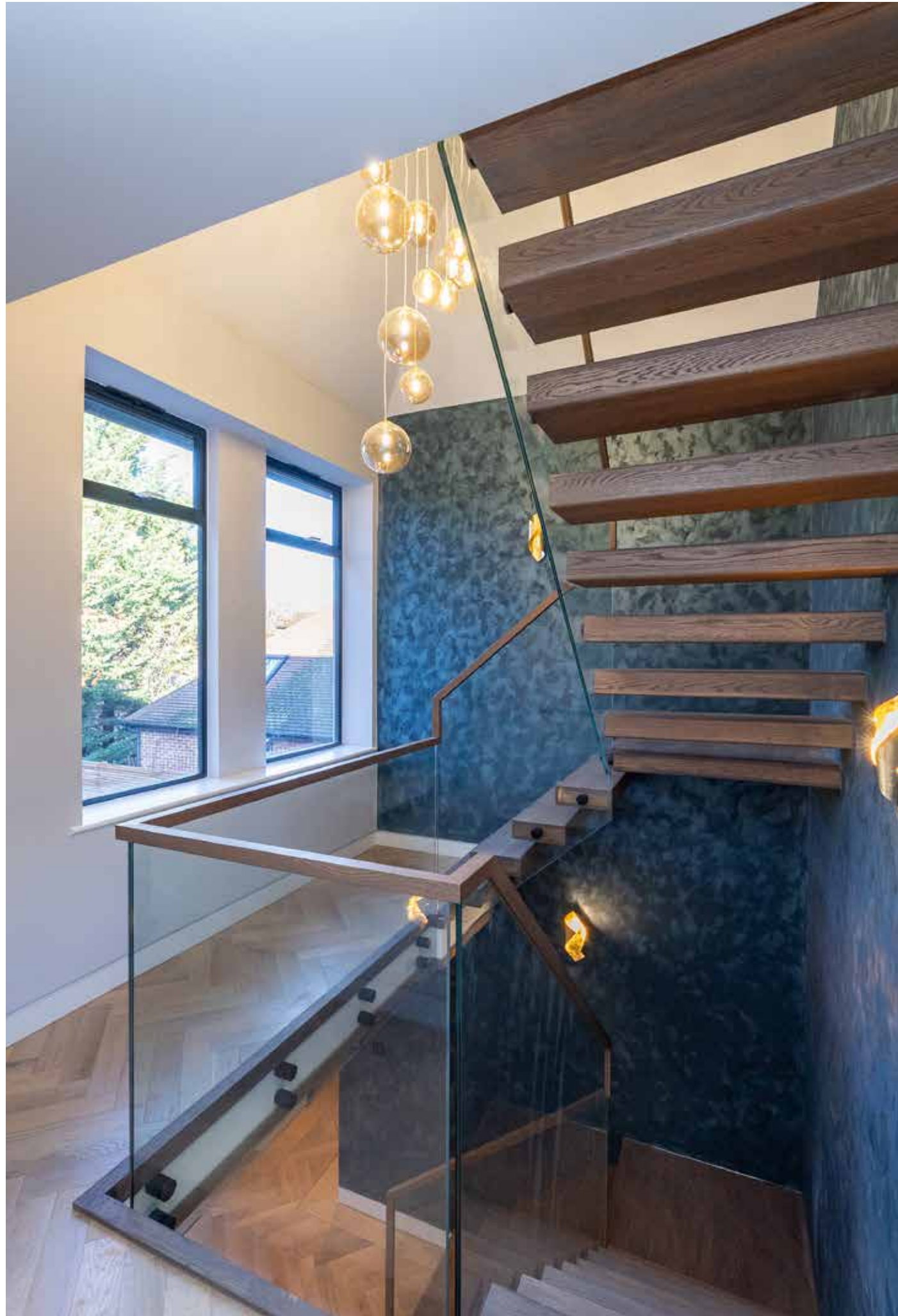
The upper floors provide five bright bedrooms with soft neutral carpets and grand windows, including a principal suite with en suite and two additional hotel style bathrms featuring full height tiling and illuminated niches. Comfort and technology include zoned wet underfloor heating systems, a Vaillant boiler with 300L cylinder, and smart lighting with LED coffered ceilings, designer radiators, and recessed lighting throughout.





The exterior offers a double block paved driveway, a rendered and brick façade with aluminium detailing, and a South East facing garden with porcelain patio, lawn, planter walls, and a composite clad garden room with full width bifolds. Overall, this property blends architectural elegance, thoughtful layout, and premium craftsmanship to create a modern and highly practical family home.

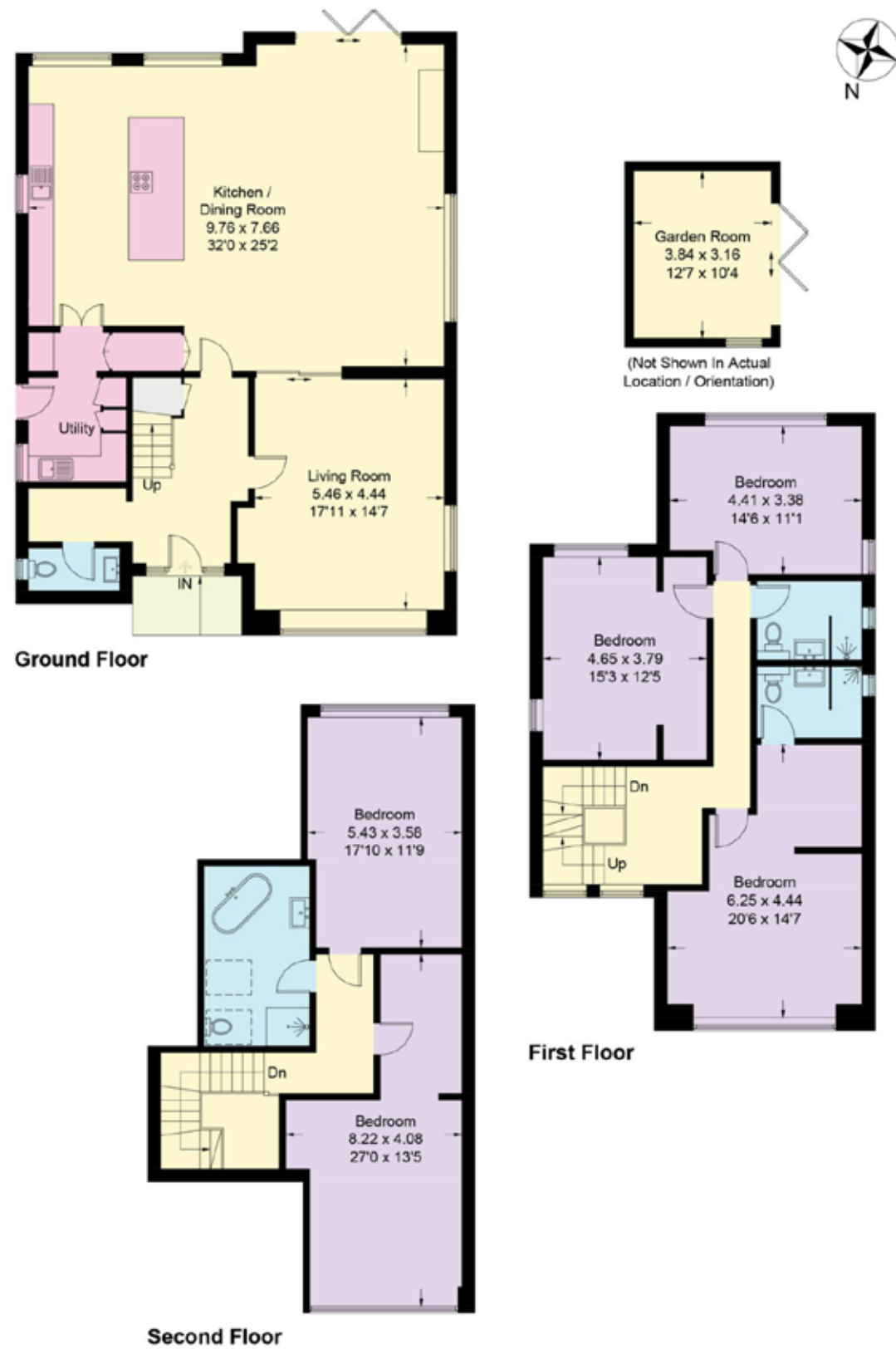




PROPERTY LOCATION

Located in Kingston Vale set between Richmond Park and Wimbledon Common, this wonderful family home is within close proximity to local amenities, Robin Hood Primary School, the A3, and nearby Kingston, Wimbledon Village, Richmond and Putney for shopping, dining, and leisure.

Wimbledon is the only London station with interchange between rail, Underground and Tramlink services. Transport links to central London are fast and frequent with regular services to London Waterloo (19 minutes). Other options are provided by the District Line and also Thameslink to London Blackfriars and London St. Pancras International for the Eurostar. The A3/M25 road network offers excellent access to both Heathrow and Gatwick airports.



Approximate Gross Internal Area = 272.7 sq m / 2935 sq ft
 Garden Room = 12.1 sq m / 130 sq ft
 Total = 284.8 sq m / 3065 sq ft

This plan is for layout guidance only. Not drawn to scale unless stated. Windows and door openings are approximate. Whilst every care is taken in the preparation of this plan, please check all dimensions, shapes and compass bearings before making any decisions reliant upon them. (ID767266)



Ross Jordan
 +44 20 3830 8634
 ross.jordan@knightfrank.com

Knight Frank Wimbledon
 58 High Street, London
 SW19 5EE

[knightfrank.co.uk](https://www.knightfrank.co.uk)

Your partners in property

1. Particulars: These particulars are not an offer or contract, nor part of one. You should not rely on statements given by Knight Frank in the particulars, by word of mouth or in writing ("information") as being factually accurate about the property, its condition or its value. Neither Knight Frank nor any joint agent has any authority to make any representations about the property, and accordingly any information given is entirely without responsibility on the part of Knight Frank. 2. Material Information: Please note that the material information is provided to Knight Frank by third parties and is provided here as a guide only. While Knight Frank has taken steps to verify this information, we advise you to confirm the details of any such material information prior to any offer being submitted. If we are informed of changes to this information by the seller or another third party, we will use reasonable endeavours to update this as soon as practical. 3. Photos, Videos etc: The photographs, property videos and virtual viewings etc. show only certain parts of the property as they appeared at the time they were taken. Areas, measurements and distances given are approximate only. 4. Regulations etc: Any reference to alterations to, or use of, any part of the property does not mean that any necessary planning, building regulations or other consent has been obtained. A buyer must find out by inspection or in other ways that these matters have been properly dealt with and that all information is correct. 5. Fixtures and fittings: A list of the fitted carpets, curtains, light fittings and other items fixed to the property which are included in the sale (or may be available by separate negotiation) will be provided by the Seller's Solicitors. 6. VAT: The VAT position relating to the property may change without notice. 7. To find out how we process Personal Data, please refer to our Group Privacy Statement and other notices at <https://www.knightfrank.com/legals/privacy-statement>.

Particulars dated January 2026. Photographs and videos dated January 2026. All information is correct at the time of going to print. Knight Frank is the trading name of Knight Frank LLP. Knight Frank LLP is a limited liability partnership registered in England and Wales with registered number OC305934. Our registered office is at 55 Baker Street, London W1U 8AN. We use the term 'partner' to refer to a member of Knight Frank LLP, or an employee or consultant. A list of members names of Knight Frank LLP may be inspected at our registered office. If you do not want us to contact you further about our services then please contact us by either calling 020 3544 0692, email to marketing.help@knightfrank.com or post to our UK Residential Marketing Manager at our registered office (above) providing your name and address.

