

Bedford House, Balham High Road SW17





Modern south facing two bedroom apartment with private balcony and Juliet balcony in Balham.



The guide price is available upon request

Leasehold: approximately 144 years remaining

London Borough of Wandsworth

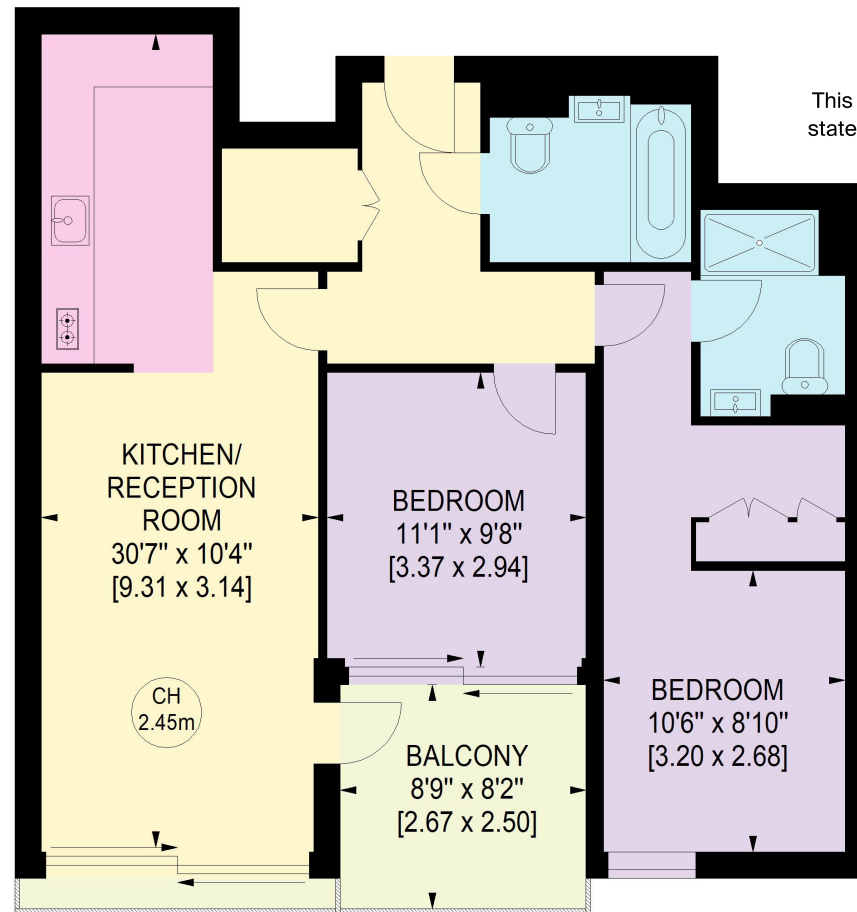




An immaculate apartment of approximately 771 square feet overlooking a peaceful courtyard situated in Balham. The space has been beautifully designed with high quality finishes and sustainable features, has two double bedrooms, two bathrooms (one en-suite) and large open plan kitchen/reception room with private south facing balcony and Juliet balcony to the rear. The apartment is situated on the second floor, has plenty of natural light and is well located to the back of the building.



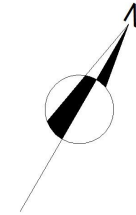
The property lies in the centre of Balham with its wide array of independent shops, cafes, restaurants and bars. The Balham station is a short walk away which is both mainline and underground lines. The green open spaces of both Tooting Bec Common, Wandsworth Common and Clapham Common which are within a close proximity.



Approximate Gross Internal Floor Area

71.63 sq m / 771 sq ft

This plan is for guidance only and must not be relied upon as a statement of fact. Attention is drawn to the Important Notice on the last page of the text of the Particulars



Knight Frank
Wandsworth
26 Bellevue Road

We would be delighted to tell you more.

26 Bellevue Road, Wandsworth, SW17 7EB
020 3925 1152
wandsworth@knightfrank.com

knightfrank.co.uk



Connecting people & property, perfectly.

Fixtures and fittings: A list of the fitted carpets, curtains, light fittings and other items fixed to the property which are included in the sale (or may be available by separate negotiation) will be provided by the Seller's Solicitors.

Important Notice: 1. Particulars: These particulars are not an offer or contract, nor part of one. You should not rely on statements by Knight Frank LLP in the particulars or by word of mouth or in writing ("information") as being factually accurate about the property, its condition or its value. Neither Knight Frank LLP nor any joint agent has any authority to make any representations about the property, and accordingly any information given is entirely without responsibility on the part of the agents, seller(s) or lessor(s). 2. Photos, Videos etc: The photographs, property videos and virtual viewings etc. show only certain parts of the property as they appeared at the time they were taken. Areas, measurements and distances given are approximate only. 3. Regulations etc: Any reference to alterations to, or use of, any part of the property does not mean that any necessary planning, building regulations or other consent has been obtained. A buyer or lessee must find out by inspection or in other ways that these matters have been properly dealt with and that all information is correct. 4. VAT: The VAT position relating to the property may change without notice. 5. To find out how we process Personal Data, please refer to our Group Privacy Statement and other notices at <https://www.knightfrank.com/legals/privacy-statement>.

Particulars dated [March 2021]. Photographs and videos dated [March 2021].

Knight Frank is the trading name of Knight Frank LLP. Knight Frank LLP is a limited liability partnership registered in England and Wales with registered number OC305934. Our registered office is at 55 Baker Street, London W1U 8AN where you may look at a list of members' names. If we use the term 'partner' when referring to one of our representatives, that person will either be a member, employee, worker or consultant of Knight Frank LLP and not a partner in a partnership. If you do not want us to contact you further about our services then please contact us by either calling 020 3544 0692, email to marketing.help@knightfrank.com or post to our UK Residential Marketing Manager at our registered office (above) providing your name and address.