



Trinity Road,  
Wandsworth  
SW18





**Guide price available on request  
Freehold**



**Semi-Detached with parking  
near Wandsworth Common  
SW18.**



The house opens into a deep wide entrance hall with a superb galleried staircase creating an open and light aspect. To the front of the house is a generous, square fronted double reception room with attractive twin fireplaces and solid wood flooring throughout. The kitchen/dining/family space is found to the rear which has a slate tile floor and benefits from a tremendous amount of space and light, offering a multi-purpose living space. The stunning kitchen features a high end, bespoke kitchen and offers an extensive range of stone topped fitted units and floor to ceiling cupboards, fully integrated appliances, with a large central island/breakfast bar and a separate pantry room. Bi folding doors at the rear open onto a wonderful, private, quiet, mature 42 ft garden with a tree lined view.



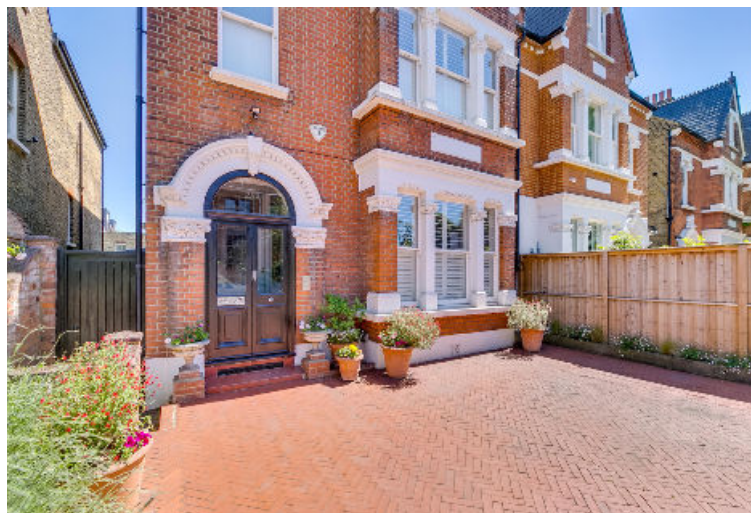




# Property

The house also benefits from a downstairs cloakroom with basement storage space. Upstairs on the first floor is a spectacular principle suite offering a fully fitted dressing room, separate gym room, and a luxurious en suite bathroom with a large shower and a further double bedroom and en suite bathroom to the rear of the house. On the top floor there is a further double bedroom with en suite bathroom, plus a further three double bedrooms with excellent ceiling height and a separate shower room. The house benefits from underfloor-heating throughout, is fully double glazed and was totally refurbished in 2014

*Ideally situated on the doorstep of Wandsworth Common and only a short walk to the shops and restaurants of Bellevue Road. There are good transport links both by bus on Trinity Road and train from Wandsworth Common Station with frequent trains to Victoria/Waterloo via Clapham Junction. The area is extremely well served by both private and state schools. There are also excellent local sporting amenities for children including Battersea Ironsides junior rugby, and The Spencer cricket and Magdalen Park tennis clubs.*











Knight Frank

26 Bellevue Road  
Wandsworth SW17 7EB

We would be delighted to tell you more.

Toby Turnage

toby.turnage@knightfrank.com



Connecting people & property, perfectly.

Fixtures and fittings: A list of the fitted carpets, curtains, light fittings and other items fixed to the property which are included in the sale (or may be available by separate negotiation) will be provided by the Seller's Solicitors.

Important Notice: 1. Particulars: These particulars are not an offer or contract, nor part of one. You should not rely on statements by Knight Frank LLP in the particulars or by word of mouth or in writing ("information") as being factually accurate about the property, its condition or its value. Neither Knight Frank LLP nor any joint agent has any authority to make any representations about the property, and accordingly any information given is entirely without responsibility on the part of the agents, seller(s) or lessor(s). 2. Photos, Videos etc: The photographs, property videos and virtual viewings etc. show only certain parts of the property as they appeared at the time they were taken. Areas, measurements and distances given are approximate only. 3. Regulations etc: Any reference to alterations to, or use of, any part of the property does not mean that any necessary planning, building regulations or other consent has been obtained. A buyer or lessee must find out by inspection or in other ways that these matters have been properly dealt with and that all information is correct. 4. VAT: The VAT position relating to the property may change without notice. 5. To find out how we process Personal Data, please refer to our Group Privacy Statement and other notices at <https://www.knightfrank.com/legal/privacy-statement>.

Particulars dated [xxxxxxxx 20xx]. Photographs and videos dated [xxxxxxxx 20xx].

Knight Frank is the trading name of Knight Frank LLP. Knight Frank LLP is a limited liability partnership registered in England and Wales with registered number OC305934. Our registered office is at 55 Baker Street, London W1U 8AN where you may look at a list of members' names. If we use the term 'partner' when referring to one of our representatives, that person will either be a member, employee, worker or consultant of Knight Frank LLP and not a partner in a partnership. If you do not want us to contact you further about our services then please contact us by either calling 020 3544 0692, email to [marketing.help@knightfrank.com](mailto:marketing.help@knightfrank.com) or post to our UK Residential Marketing Manager at our registered office (above) providing your name and address.