



Ellerton Road, Wandsworth SW18



Ellerton Road, Wandsworth SW18

Entering the spacious hallway, you're greeted with warmth and comfort. To the right, a cosy reception room provides a tranquil retreat. Towards the back, an inviting open-plan kitchen/reception room awaits, flooded with natural light. Thoughtfully designed, this space is remarkably versatile, perfect for family gatherings. An impressive dining area seamlessly merges with the relaxed family zone, offering views of the picturesque southwest-facing garden. The well-appointed kitchen features a large central island, breakfast bar, integrated appliances, and ample storage. Additionally, a convenient W.C. and utility room with its own driveway entrance complete this level.



Guide price: £2,800,000

Tenure: Available freehold

Local authority: G

Council tax band: London Borough of Wandsworth



Floor-to-ceiling doors and windows at the rear blur the lines between indoors and outdoors, enhancing the sense of spaciousness and brightness. The impeccably maintained, approximately 50ft South Westerly garden provides an ideal setting for al fresco dining and entertaining during the warmer months. Ascending to the first floor, you'll discover three generously proportioned double bedrooms, including an impressive principal suite. The principal suite boasts a walk-in dressing room and a luxurious ensuite bathroom. Bedrooms 2 and 3 also offer ample space and come equipped with large built-in wardrobes. A beautifully appointed family bathroom completes this floor. Venturing to the second floor reveals two additional double bedrooms, each with its own built-in storage, along with an additional family bathroom, providing ample accommodation for family or guests. Descending to the lower ground floor, a spacious family room/games room offers a versatile space for relaxation and entertainment. This remarkable family home effortlessly combines modern luxury with practicality, offering an unparalleled living experience in a prime location within the Magdalen Estate conservation area.



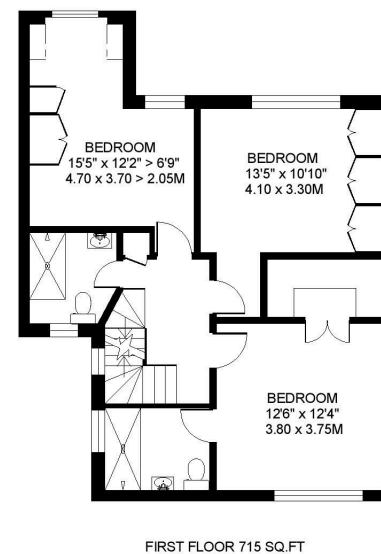
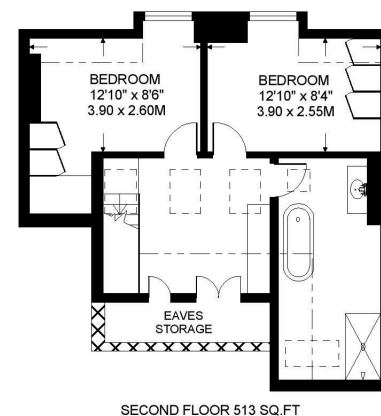
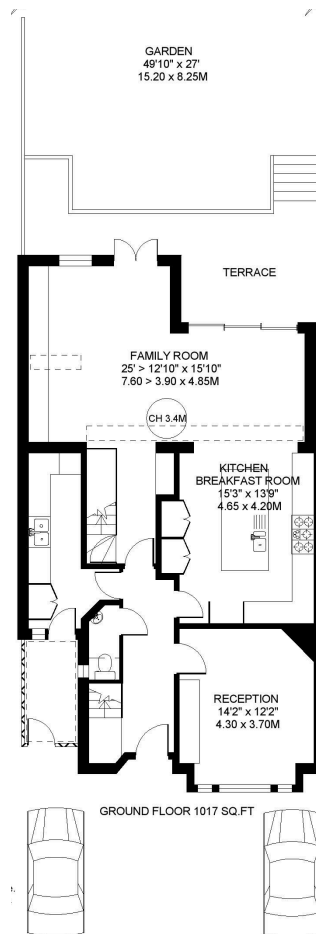
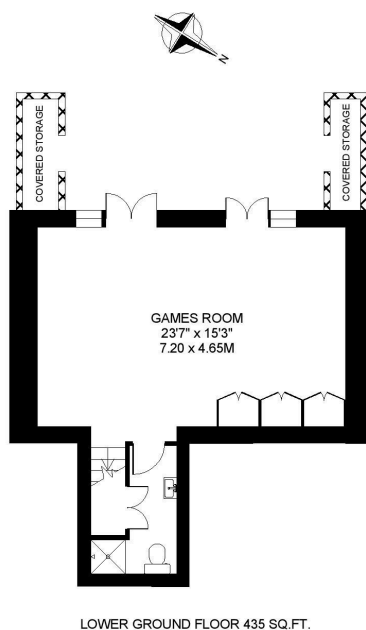




Ellerton Road, SW18

Total Area Shown on Plan
260.1 sq m / 2,800 sq ft

This plan is for guidance only and must not be relied upon as a statement of fact. Attention is drawn to the important notice on the last page of the text of the Particulars.



Knight Frank

Wandsworth

26 Bellevue Road

Wandsworth SW17 7EB

[knightfrank.co.uk](https://www.knightfrank.co.uk)

We would be delighted to tell you more

Jack Gravestock

020 3667 6751

jack.gravestock@knightfrank.com

Fixtures and fittings: A list of the fitted carpets, curtains, light fittings and other items fixed to the property which are included in the sale (or may be available by separate negotiation) will be provided by the Seller's Solicitors.

Important Notice: 1. Particulars: These particulars are not an offer or contract, nor part of one. You should not rely on statements by Knight Frank LLP in the particulars or by word of mouth or in writing ("information") as being factually accurate about the property, its condition or its value. Neither Knight Frank LLP nor any joint agent has any authority to make any representations about the property, and accordingly any information given is entirely without responsibility on the part of the agents, seller(s) or lessor(s). 2. Photos, Videos etc: The photographs, property videos and virtual viewings etc. show only certain parts of the property as they appeared at the time they were taken. Areas, measurements and distances given are approximate only. 3. Regulations etc: Any reference to alterations to, or use of, any part of the property does not mean that any necessary planning, building regulations or other consent has been obtained. A buyer or lessee must find out by inspection or in other ways that these matters have been properly dealt with and that all information is correct. 4. VAT: The VAT position relating to the property may change without notice. 5. To find out how we process Personal Data, please refer to our Group Privacy Statement and other notices at <https://www.knightfrank.com/legals/privacy-statement>.

Particulars dated 07.06.2024, Photographs and videos dated 23.04.2024.

All information is correct at the time of going to print. Knight Frank is the trading name of Knight Frank LLP. Knight Frank LLP is a limited liability partnership registered in England and Wales with registered number OC305934. Our registered office is at 55 Baker Street, London W1U 8AN. We use the term 'partner' to refer to a member of Knight Frank LLP, or an employee or consultant. A list of members names of Knight Frank LLP may be inspected at our registered office. If you do not want us to contact you further about our services then please contact us by either calling 020 3544 0692, email to marketing.help@knightfrank.com or post to our UK Residential Marketing Manager at our registered office (above) providing your name and address.

