



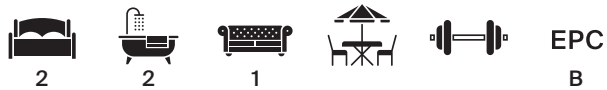
Buttercup House, Springfield Drive, London SW17



Springfield Drive, London SW17

This stunning property boasts a spacious balcony, making it perfect for enjoying outdoor relaxation or entertaining guests.

The apartment offers well-balanced accommodation and generous living spaces. Inside, you'll find two well-appointed bedrooms. The principal bedroom features an en-suite bathroom with a modern shower. The second bedroom is versatile, and is conveniently located near the second bathroom. The open-plan kitchen and reception area create a seamless flow. This apartment offers both style and comfort, making it an excellent choice for those looking for a home that truly stands out in Wandsworth Common.



Guide price: £615,000

Tenure: Leasehold: approximately 995 years remaining

Service charge: £2,178 per annum, reviewed every year, next review due 2025

Local authority: London Borough of Wandsworth

Council tax band: D







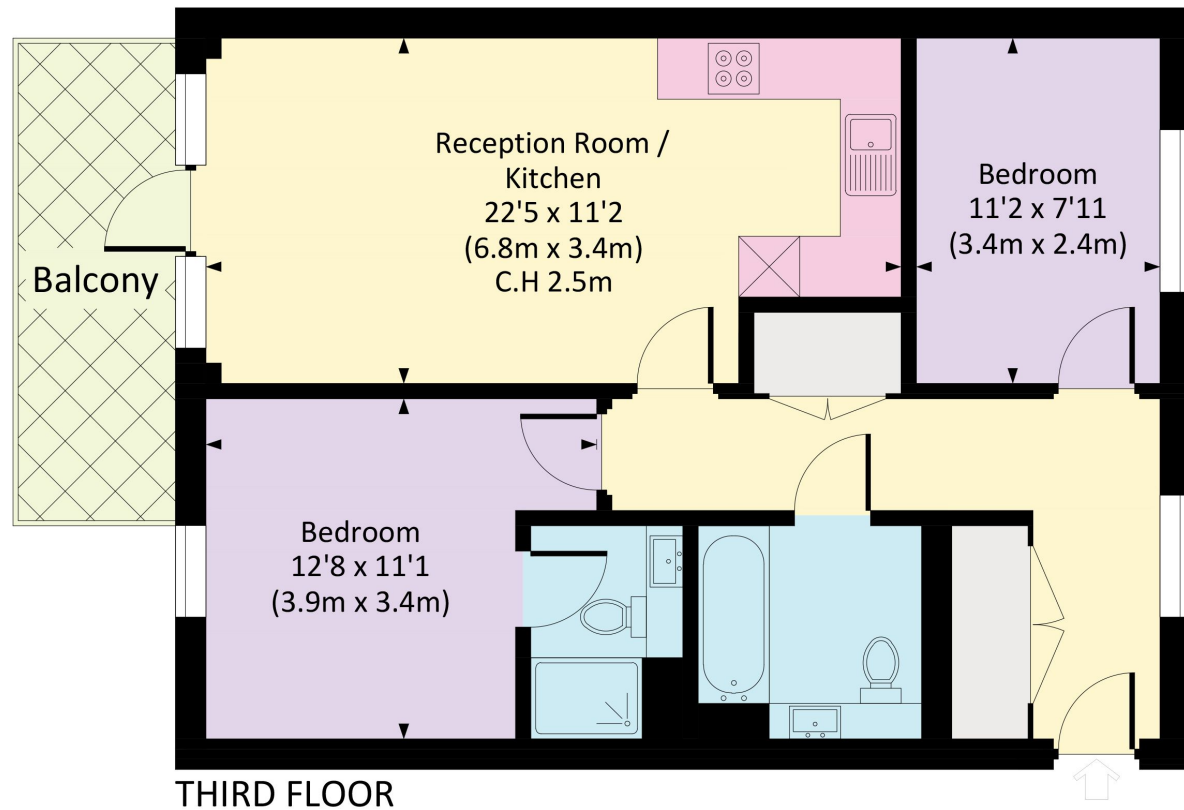




Springfield Drive, SW17

**Approximate Gross Internal Floor Area
65 sq m / 700 sq ft**

This plan is for guidance only and must not be relied upon as a statement of fact. Attention is drawn to the important notice on the last page of the text of the Particulars.



THIRD FLOOR

Knight Frank
Wandsworth
26 Bellevue Road
Wandsworth SW17 7EB

We would be delighted to tell you more

Natasha Edney
020 8682 7772

[knightfrank.co.uk](https://www.knightfrank.co.uk)

natasha.edney@knightfrank.com



Fixtures and fittings: A list of the fitted carpets, curtains, light fittings and other items fixed to the property which are included in the sale (or may be available by separate negotiation) will be provided by the Seller's Solicitors.

Important Notice: 1. Particulars: These particulars are not an offer or contract, nor part of one. You should not rely on statements by Knight Frank LLP in the particulars or by word of mouth or in writing ("information") as being factually accurate about the property, its condition or its value. Neither Knight Frank LLP nor any joint agent has any authority to make any representations about the property, and accordingly any information given is entirely without responsibility on the part of the agents, seller(s) or lessor(s). 2. Photos, Videos etc: The photographs, property videos and virtual viewings etc. show only certain parts of the property as they appeared at the time they were taken. Areas, measurements and distances given are approximate only. 3. Regulations etc: Any reference to alterations to, or use of, any part of the property does not mean that any necessary planning, building regulations or other consent has been obtained. A buyer or lessee must find out by inspection or in other ways that these matters have been properly dealt with and that all information is correct. 4. VAT: The VAT position relating to the property may change without notice. 5. To find out how we process Personal Data, please refer to our Group Privacy Statement and other notices at <https://www.knightfrank.com/legals/privacy-statement>.

Particulars dated August 2024. Photographs and videos dated August 2024.

Knight Frank is the trading name of Knight Frank LLP. Knight Frank LLP is a limited liability partnership registered in England and Wales with registered number OC305934. Our registered office is at 55 Baker Street, London W1U 8AN where you may look at a list of members' names. If we use the term 'partner' when referring to one of our representatives, that person will either be a member, employee, worker or consultant of Knight Frank LLP and not a partner in a partnership. If you do not want us to contact you further about our services then please contact us by either calling 020 3544 0692, email to marketing.help@knightfrank.com or post to our UK Residential Marketing Manager at our registered office (above) providing your name and address.