

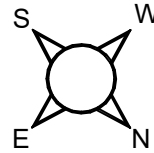
Nutwood Barn, Staunton, Gloucester
APPROXIMATE GROSS INTERNAL FLOOR AREA

Main House = 247sq.m (2,654sq.ft)

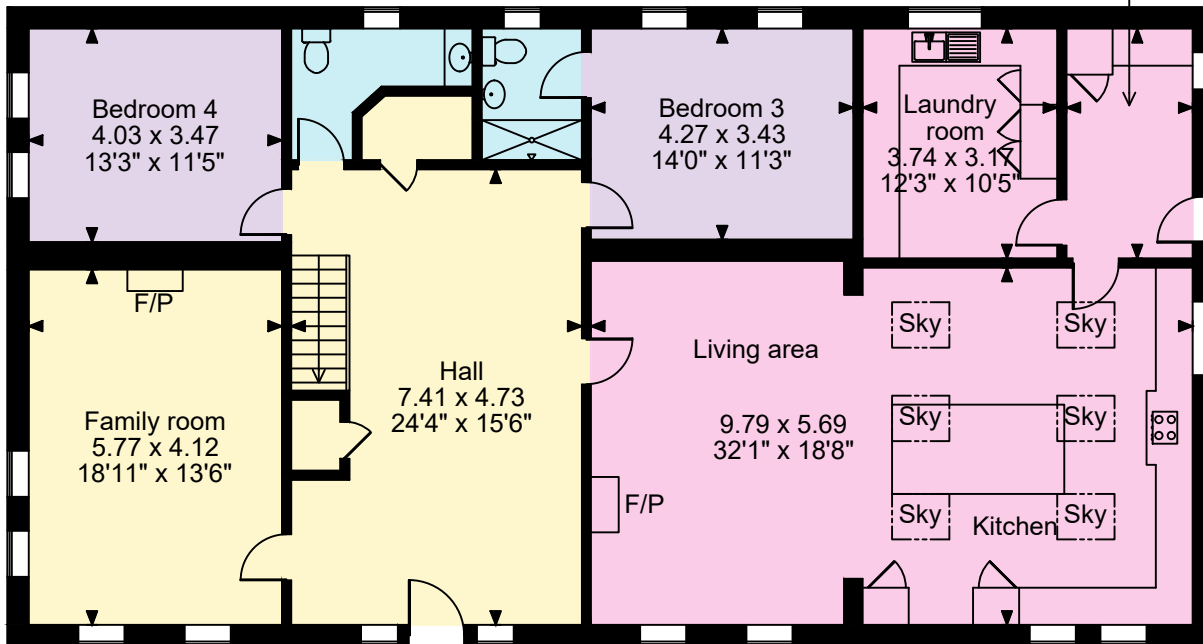
Garage = 36sq.m (387sq.ft)

Outbuilding = 24sq.m (261sq.ft)

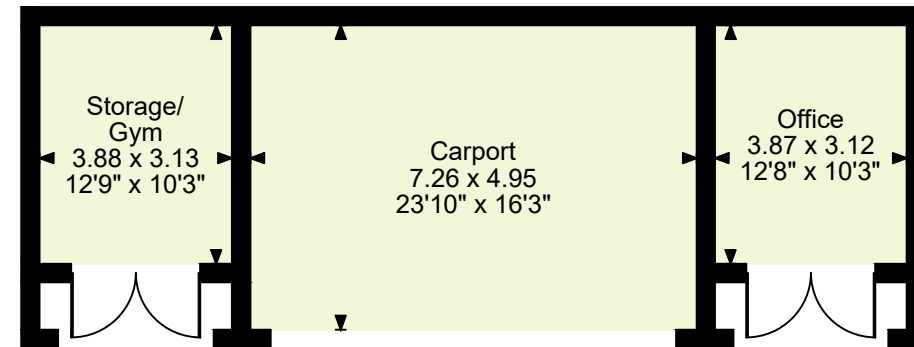
Total = 307sq.m (3,302sq.ft)



3.73 x 1.99
12'3" x 6'6"

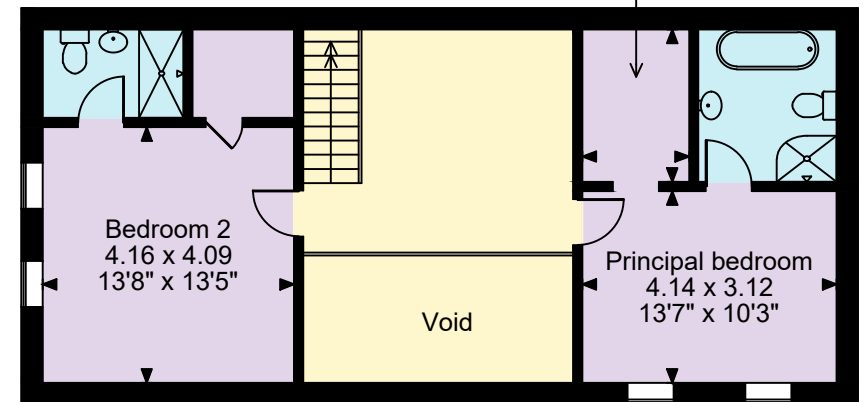


ground floor



outbuilding

Walk-in wardrobe
2.48 x 1.73
8'2" x 5'8"



first floor