



ESHER AND WEYBRIDGE LETTINGS INSIGHT 2019

Market Update

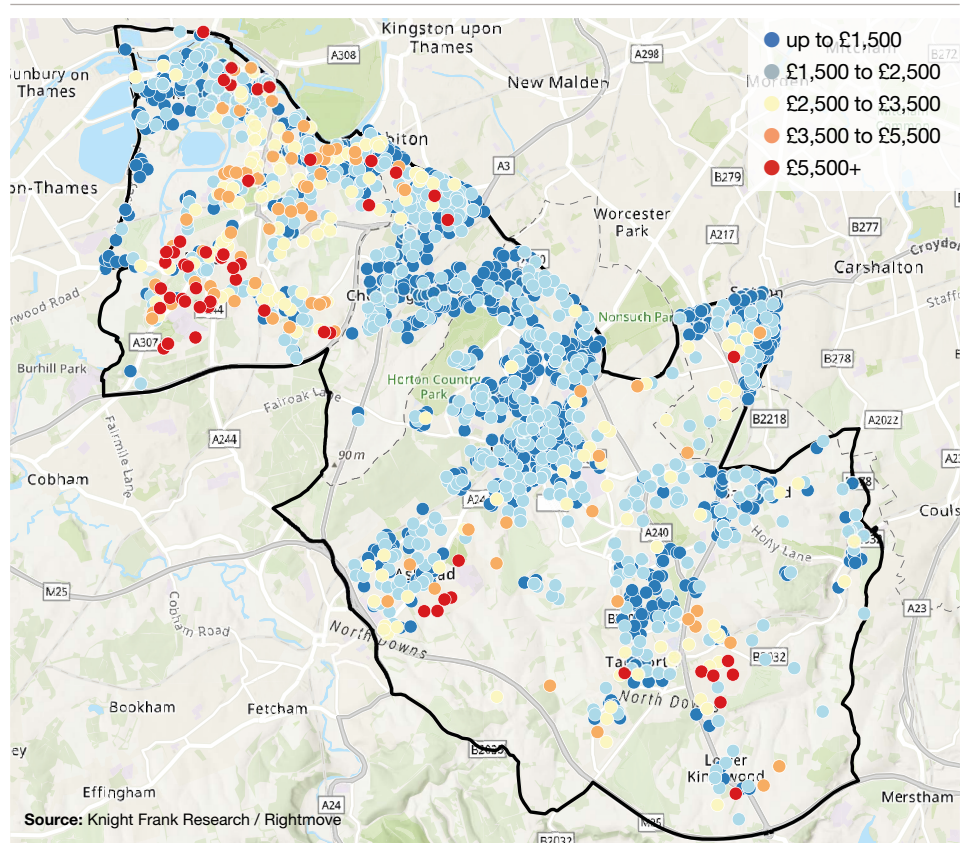
The number of properties listed for rent in Esher, Weybridge and the surrounding area fell 7.4% year-on-year in the second half of 2018, according to data from Rightmove. This slowdown was particularly acute for properties which rent for between £7,000 and £12,000 per month. Despite a fall in the number of properties available to rent, demand has remained robust. Knight Frank figures show year-on-year increases in both new tenant registrations and property viewings over the course of 2018.

Jamie-Leigh Harvey, Esher Lettings

“We have noticed an increase in the number of ‘try before you buy’ tenants across the Home Counties over the past year, many of whom tend to be flexible on location and happy to move around to find the right house, be that in Esher, Cobham or Weybridge. Demand from corporate tenants who are moving to the area for work, and at the super-prime end of the market, also rose markedly in 2018 and we expect such activity will continue this year.”

Monthly asking rents in Esher and Weybridge and the surrounding area

Year to January 2019

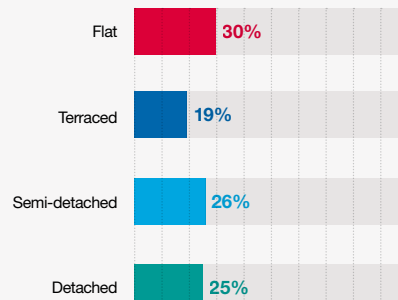


Esher and Weybridge fact sheet

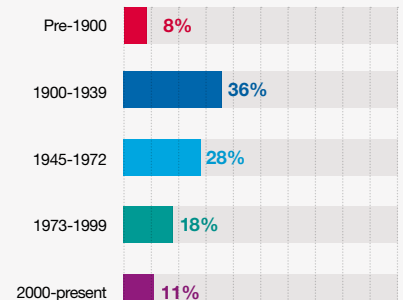
KEY STATISTICS

- 1.4%** Annual change in rental values in South East England
- 11.7%** Increase in property viewings in Esher in 2018 v 2017
- 36.1%** Proportion of listings in Esher that were 2-bed flats in 2018
- 26%** Year-on-year increase in corporate relocation enquiries in 2018

PROPERTY TYPE



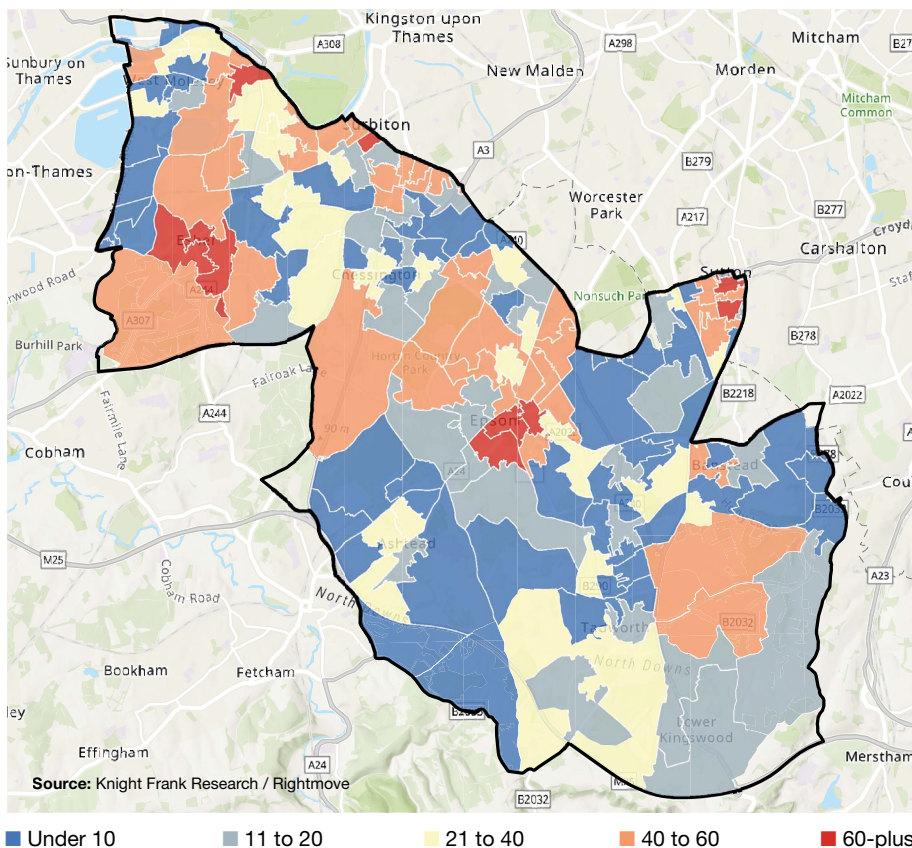
AGE OF HOUSING STOCK



ESHER AND WEYBRIDGE LETTINGS INSIGHT 2019

Where is renting most prevalent in Esher and Weybridge?

Number of lettings listings, year to January 2019



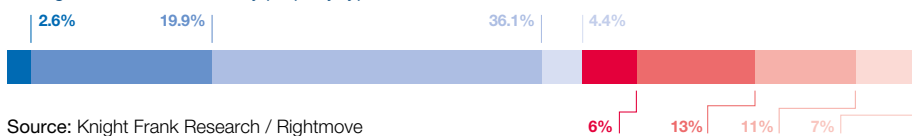
Under 10 11 to 20 21 to 40 40 to 60 60-plus

Rental market analysis by property type

Average monthly asking rents, year to January 2019

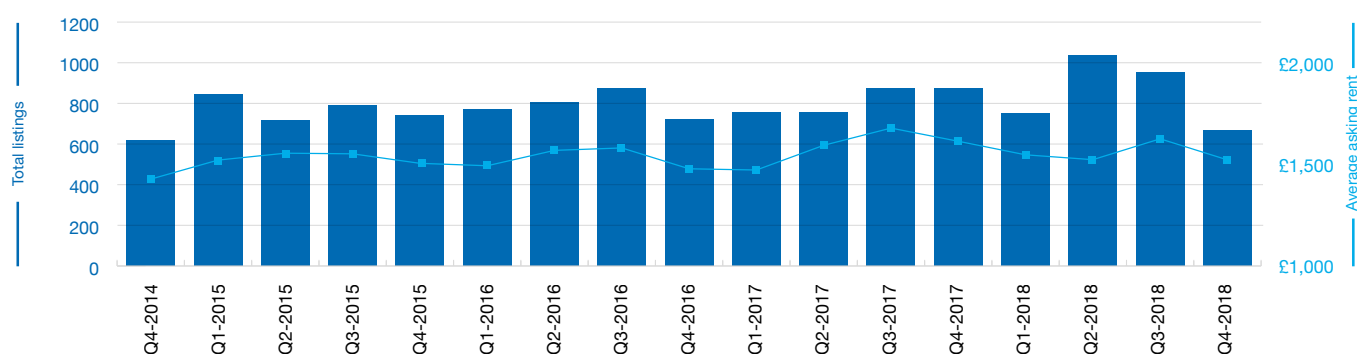
| Type | Beds | Average monthly asking rent | Type | Beds | Average monthly asking rent |
|------|------|-----------------------------|-------|------|-----------------------------|
| Flat | 0 | £799 | House | 2 | £1,400 |
| Flat | 1 | £999 | House | 3 | £1,741 |
| Flat | 2 | £1,346 | House | 4 | £2,530 |
| Flat | 3 | £1,758 | House | 5 | £3,906 |

Lettings market breakdown by property type



Lettings volumes and rental value data Esher, Weybridge and surrounds

■ Total listings ■ Average asking rent



RESIDENTIAL RESEARCH



Oliver Knight
Associate
+44 20 7861 5134
oliver.knight@knightfrank.com

Please get in touch

If you are a landlord or a tenant and would like some help or information, we would love to hear from you



Jamie-Leigh Harvey
+44 1932 591 612
jamie-leigh.harvey@knightfrank.com

Important Notice

© Knight Frank LLP 2019 - This report is published for general information only and not to be relied upon in any way. Although high standards have been used in the preparation of the information, analysis, views and projections presented in this report, no responsibility or liability whatsoever can be accepted by Knight Frank LLP for any loss or damage resultant from any use of, reliance on or reference to the contents of this document. As a general report, this material does not necessarily represent the view of Knight Frank LLP in relation to particular properties or projects. Reproduction of this report in whole or in part is not allowed without prior written approval of Knight Frank LLP to the form and content within which it appears. Knight Frank LLP is a limited liability partnership registered in England with registered number OC305934. Our registered office is 55 Baker Street, London, W1U 8AN, where you may look at a list of members' names.