

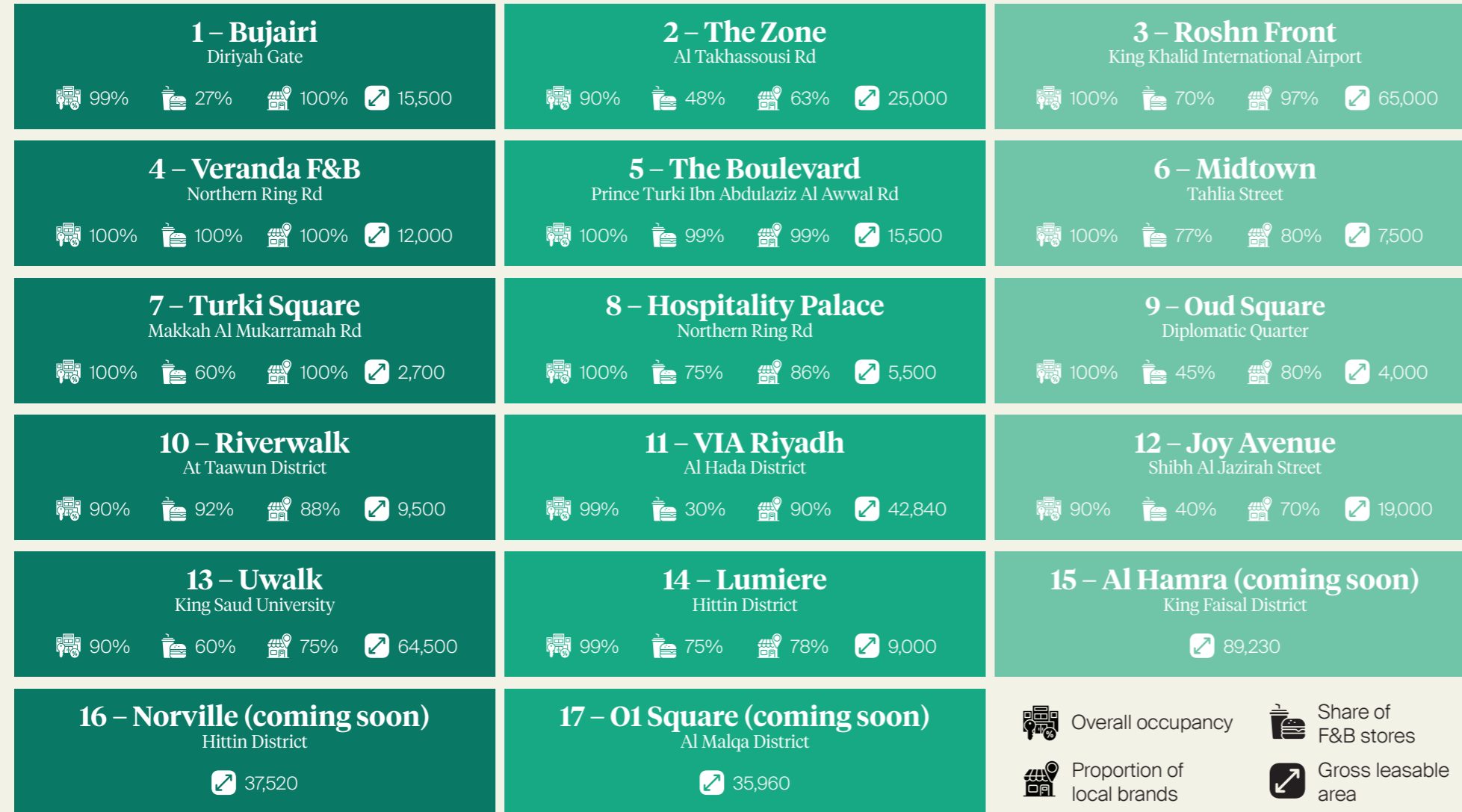
# RIYADH LIFESTYLE RETAIL SCENE

Q1 2025

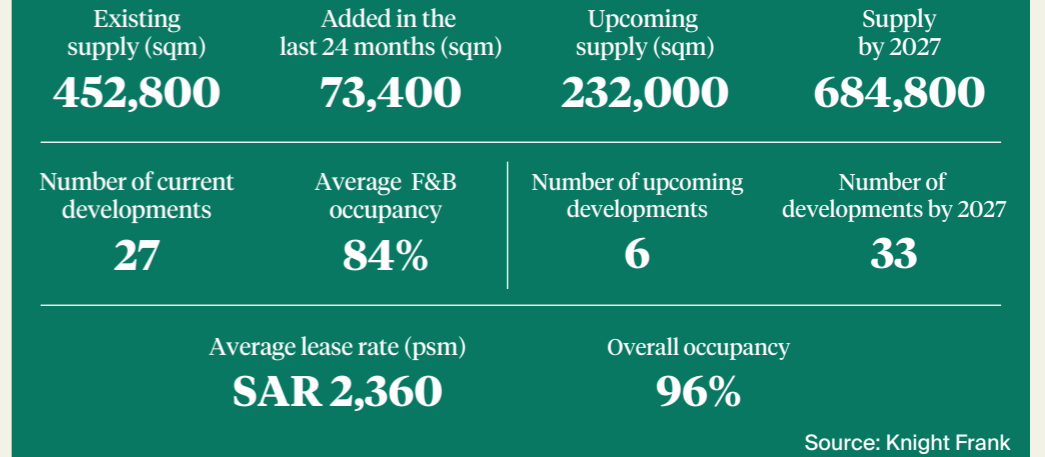


Riyadh's retail continues to evolve, with experience-based entertainment and lifestyle retail developments dominating the development pipeline and new offerings across the city. Over the last 24 months, more than 73,000 sqm has been added to this retail sub-sector.

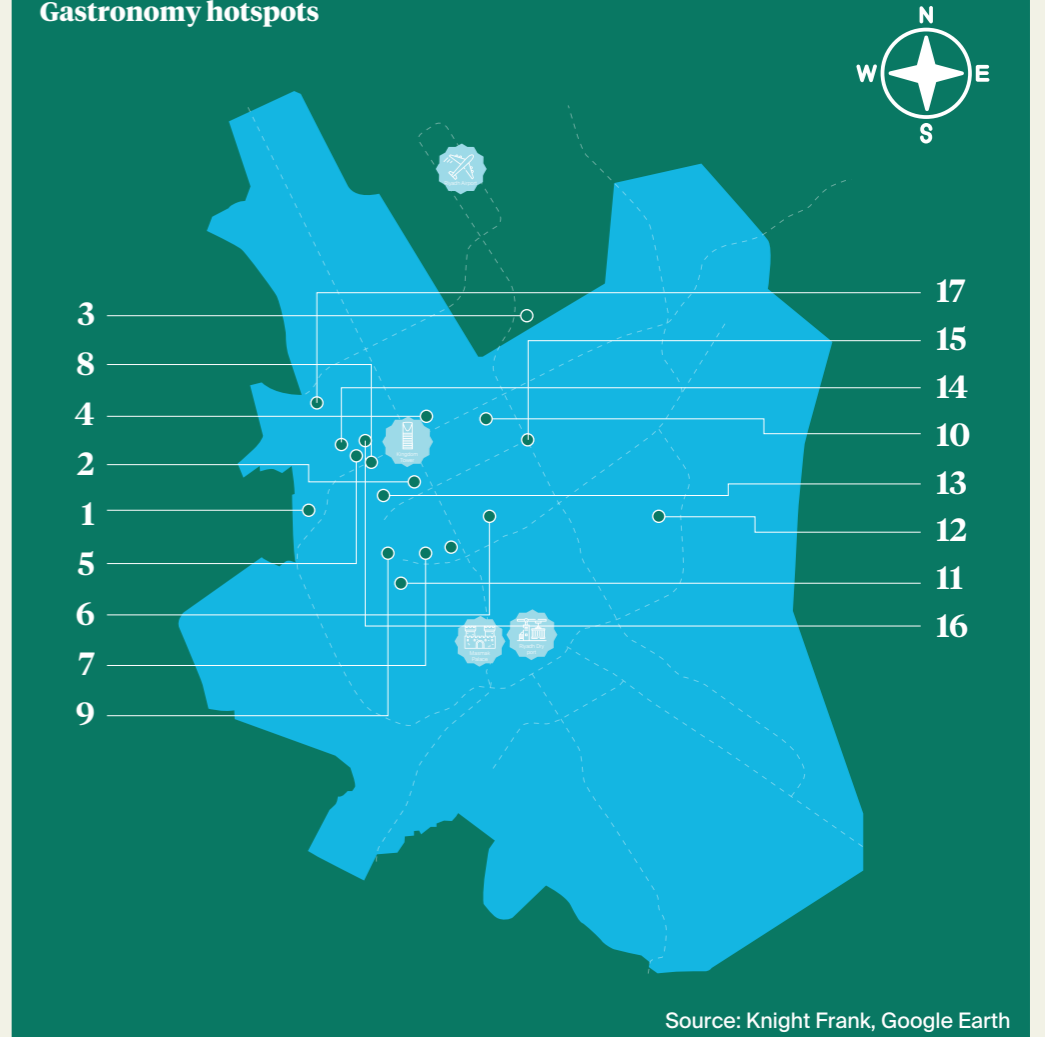
## Major lifestyle retail developments



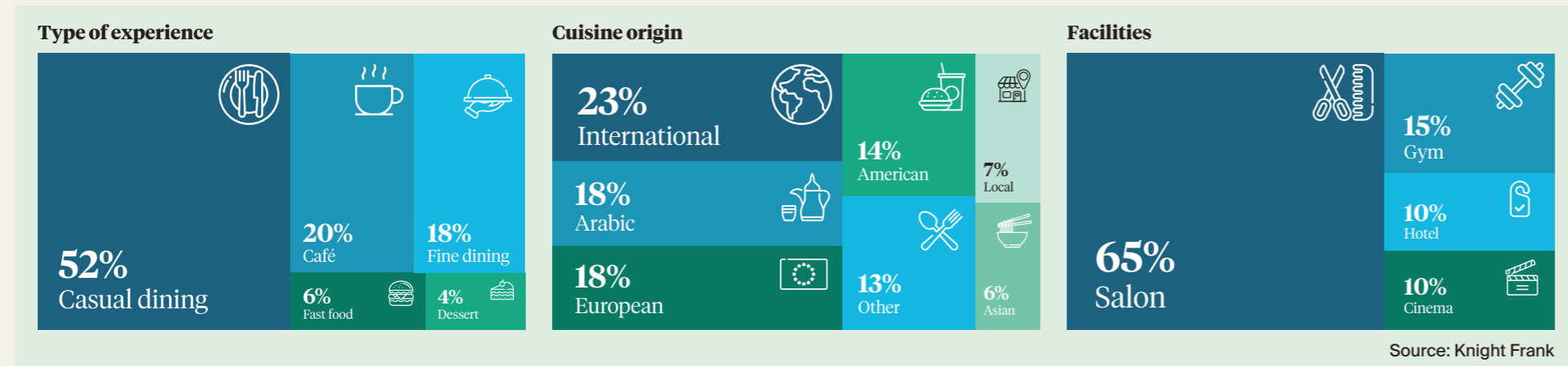
## Lifestyle and retail landscape



## Gastronomy hotspots



## Riyadh's lifestyle retail landscape – in summary



### Important Notice

© Knight Frank 2025 - This report is published for general information only and not to be relied upon in any way. Although high standards have been used in the preparation of the information, analysis, views and projections presented in this report, no responsibility or liability whatsoever can be accepted by Knight Frank for any loss or damage resulting from any use of, reliance on or reference to the contents of this document. As a general report, this material does not necessarily represent the view of Knight Frank in relation to particular properties or projects. Reproduction of this report in whole or in part is prohibited without prior written approval of Knight Frank to the form and content within which it appears.  
 Knight Frank, Building 7, Laysen Valley, Riyadh, Kingdom of Saudi Arabia  
 Knight Frank, 47th floor, The Headquarters Business Park, Jeddah, Kingdom of Saudi Arabia

Discover our research:  
[knightfrank.com.sa/en/research](https://knightfrank.com.sa/en/research)

[in @KnightFrankMENA](#)
[@KnightFrankUAE](#)
[@KnightFrankMENA](#)  
[@MENAKnightFrank](#)
[@KnightFrankMENA](#)

# JEDDAH LIFESTYLE RETAIL SCENE

Q1 2025

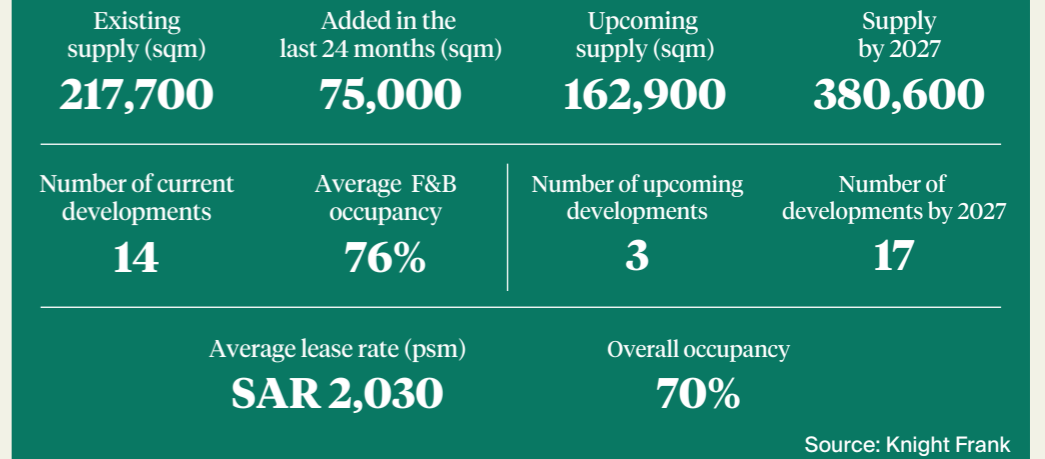


In the last 24 months Jeddah has witnessed its F&B supply in lifestyle retail developments expanding, with 75,000 sqm being completed, across 14 new developments. By 2027, the city's lifestyle retail supply is expected to rise to 380,600 sqm with the development of new projects such as Sunset Avenue, Jeddah Cove Waterfront and Porta Jeddah.

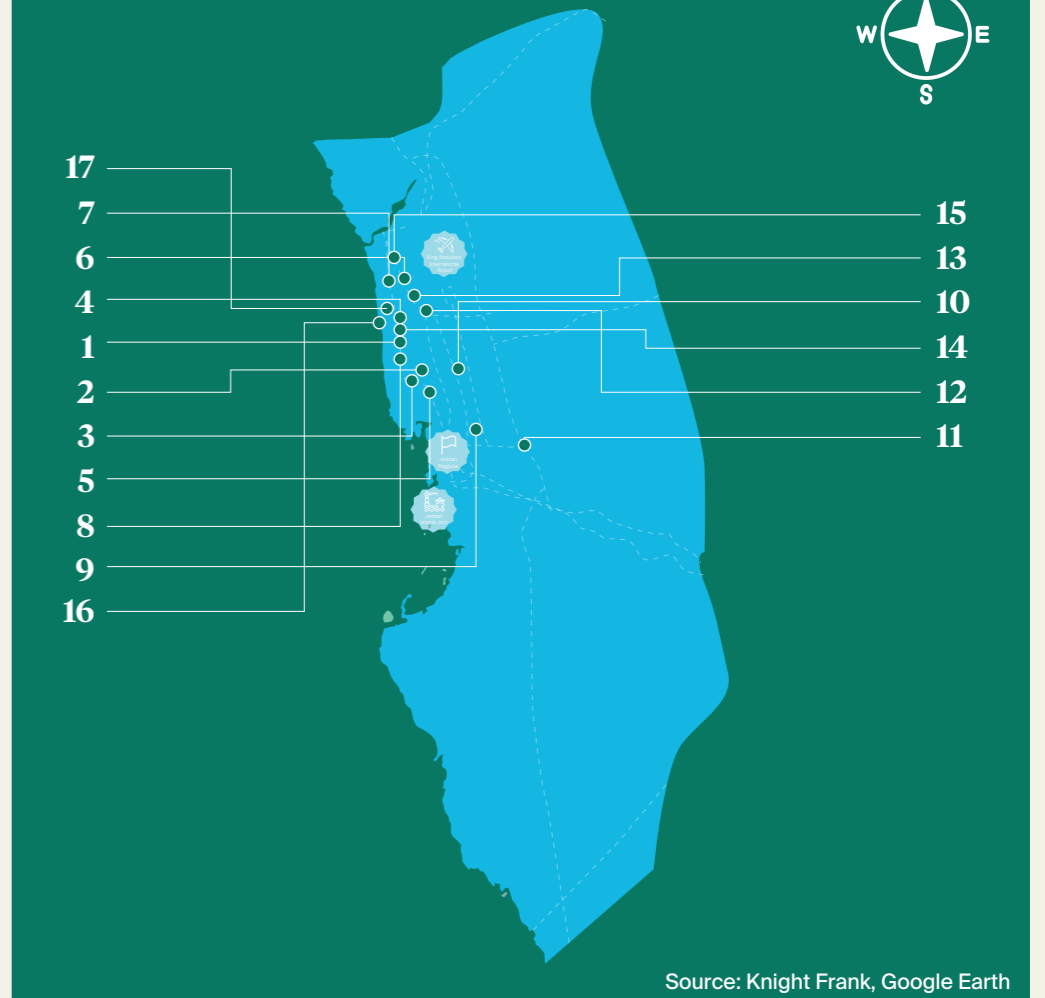
## Major lifestyle retail developments



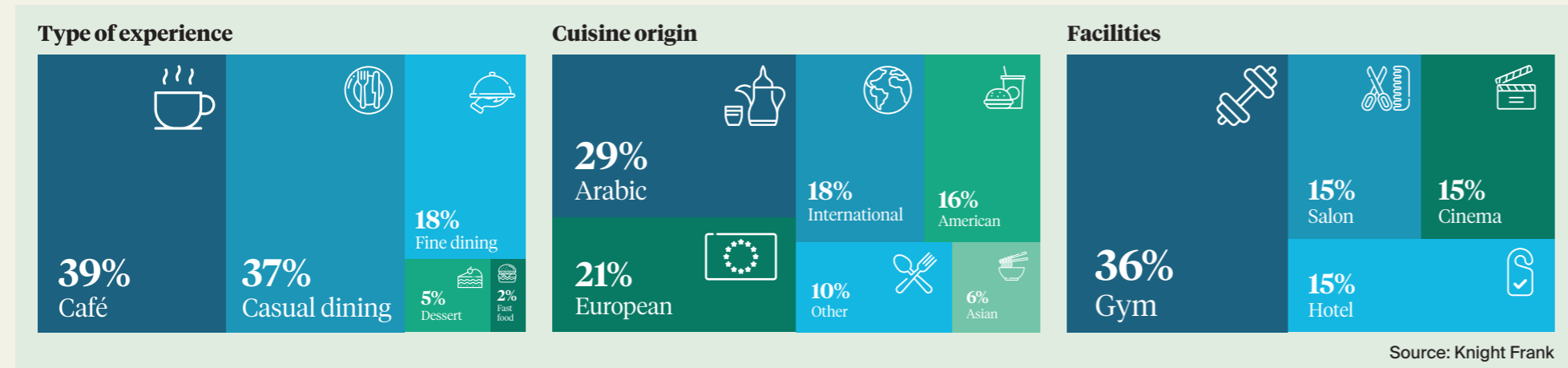
## Lifestyle and retail landscape



## Gastronomy hotspots



## Jeddah's lifestyle retail landscape – in summary



Susan Amawi  
 General Manager - KSA  
 susan.amawi@me.knightfrank.com

Jonathen Pagett  
 Partner - Head of Retail Advisory, KSA  
 jonathan.pagett@me.knightfrank.com

Harmen De Jong  
 Regional Partner - Head of Consultancy, MENA  
 harmen.dejong@me.knightfrank.com

Faisal Durrani  
 Partner - Head of Research, MENA  
 faisal.durrani@me.knightfrank.com

Amar Hussain  
 Associate Partner - Research, ME  
 amar.hussain@me.knightfrank.com

Vera Zabelina  
 Research Analyst  
 vera.zabelina@me.knightfrank.com

Mhd Eyad Al Saidi  
 Research Creative, ME  
 eyad.alsaidi@me.knightfrank.com