

Bath

New Homes

PROPERTY LIST 2019

Welcome.

As one of the UK's largest and most experienced new homes property consultancies, we are well placed to bring you your perfect new home or investment property.

We work with the industry's best house builders and developers so you can be assured of high specifications, outstanding workmanship and great after sales care.

As the largest privately owned global property consultancy, Knight Frank is driven by a uniquely personal culture. This culture enables a tailored approach to assisting our clients, drives us to continually strengthen relationships across our network and affords us the agility to stay ahead.

We hope this property list will provide you with an exciting flavour of our current new homes opportunities.

Lansdown Square West

BAI.

Prices from
£995,000



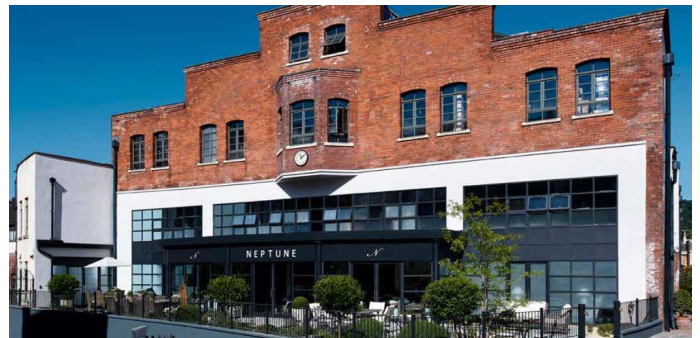
The leafy Bath suburb of Lansdown is home to Lansdown Square West, a new development of 4-bedroom townhouses and 5-bedroom villas by Bath-based developer Kersfield. The Townhouse offers flexible living space with two spacious reception areas, ample storage and an excellent specification.

- Garage and additional private parking
- High specification
- Stamp Duty incentive available
- 10 year build warranty
- Underfloor heating throughout
- Roof terraces with all houses



One Tram Yard BAI.

Prices from
£595,000



Created by Neptune, this newly converted city centre development offers stunning interior design and benefits from the very highest specification. Phase 1 of this development consists of 2 & 3 bedroom lateral apartments with the penthouse apartment benefiting from 2 external terraces.

- Lift access to all floors
- Private parking for all phase 1 apartments
- Dedicated Estate Manager
- High quality internal finish
- Within walking distance of amenities
- 10 year build warranty



Tynning Meadows BA2.

Prices from
£1,350,000



Tynning Meadows is a high quality development of 10 detached family residences by Charcombe Homes. Situated at the base of the Limpley Stoke Valley and nestled below the surrounding downs, the site is within the Green Belt and the Cotswold Area of Outstanding Natural Beauty.

- Gated entrance to each plot
- Double garage with potential for studio above
- Southerly garden aspect
- Rural views
- High quality specification and internal finish
- Award winning development



Milsom Apartments BAI.

Prices from
£195,000



Milsom Apartments is a unique residential development of 14 apartments within a Grade II listed building and combines a traditional Georgian exterior with contemporary internal elegance.

- City Centre Location
- Original Georgian features retained
- Integrated appliances
- Holiday lets permitted
- Grade II listed Fa"ÉBade



Hawkers Yard BAI.

Prices from
£1,000,000



Hawkers Yard is a bespoke development of family residences by Charlcombe Homes. Situated in the centre of the desirable village of Northend, the site lies at the foot of Solsbury Hill and on the edge of the village with views over the beautiful St Catherine's Valley.

- Views of St Catherine's Valley
- Within 3.5 miles of Bath city centre
- Detached family residences
- Desirable village location
- Built by award winning local developer Charlcombe Homes
- Completion Summer 2019





Contact *us.*

For more information please contact us. We'd love to help you.

James Dredge
T +44 1225 325996
M +44 7970 107 494
james.dredge@knightfrank.com

Francine Watson
T +44 117 317 1986
M +44 7795 127 760
francine.watson@knightfrank.com

Important Notice

Particulars: These particulars are not an offer or contract, nor part of one. You should not rely on statements by Knight Frank LLP in the particulars or by word of mouth or in writing ("information") as being factually accurate about the property, its condition or its value. Neither Knight Frank LLP nor any joint agent or any other person has any authority to make any representations about the property, and accordingly any information given is entirely without responsibility on the part of the agents, seller(s) or lessor(s). Plans, Maps and Computer Generated Images (CGIs): CGIs used in this document are for indicative and illustrative purposes only. Areas, measurements and distances given are approximate only. Regulations etc: Any reference to alterations to, or use of, any part of the property does not mean that any necessary planning, building regulations or other consent has been obtained. None of the services or appliances have been tested and no warranty is given or is to be implied that they are in working order. A buyer or lessee must find out by inspection or in other ways that these matters have been properly dealt with and that all information is correct. VAT: The VAT position relating to the property may change without notice.

Knight Frank LLP is a limited liability partnership registered in England with registered number OC305934. Our registered office is 55 Baker Street, London, W1U 8AN, where you may look at a list of members' names.

knightfrank.co.uk

**Connecting people
& property, perfectly.**

