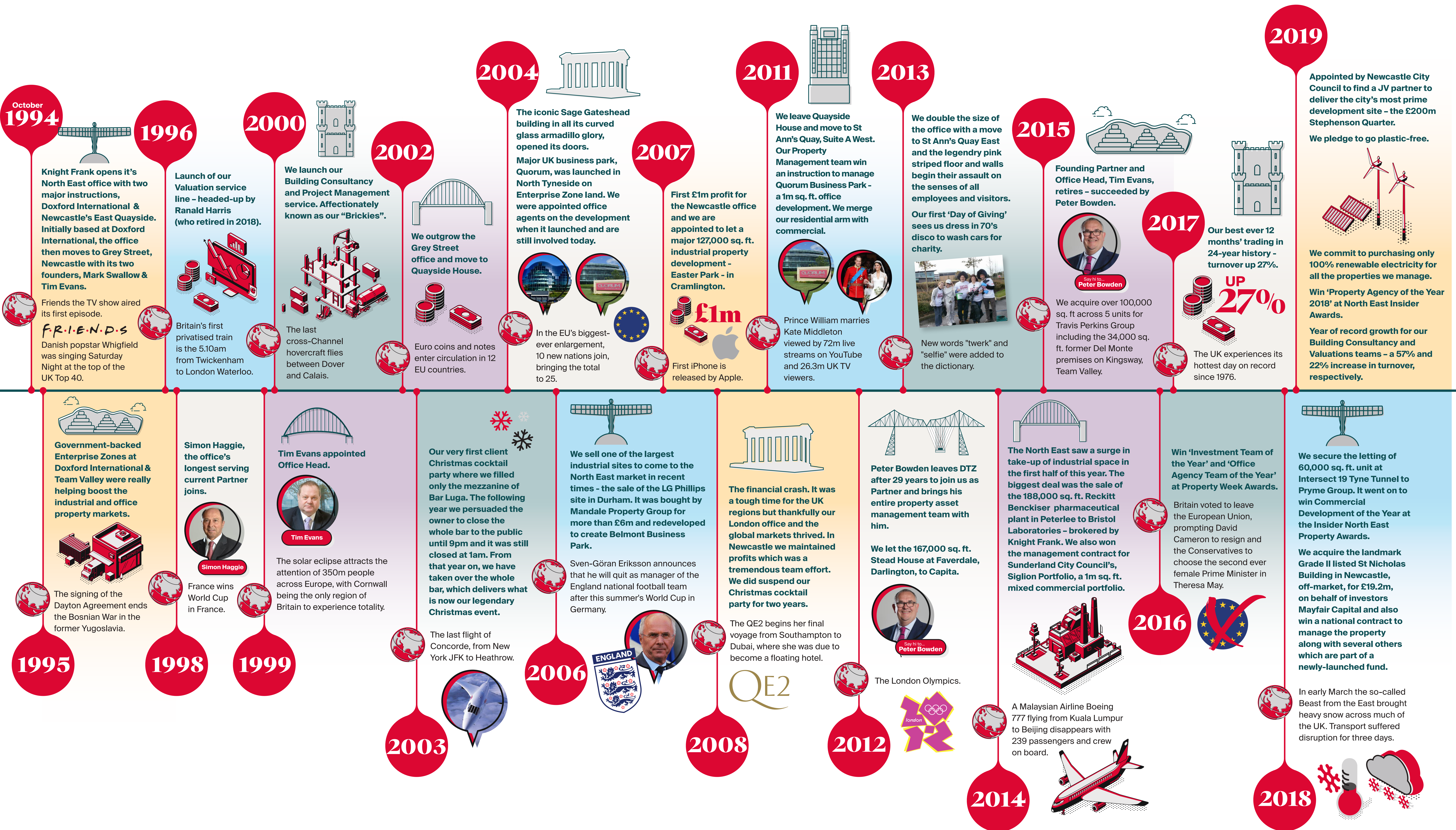


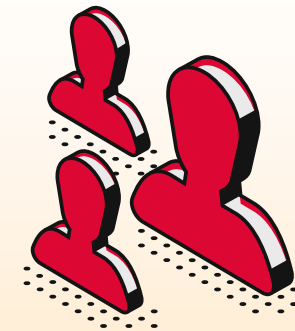
# Our Journey from 1994 to 2019





# Then & now quick facts

1

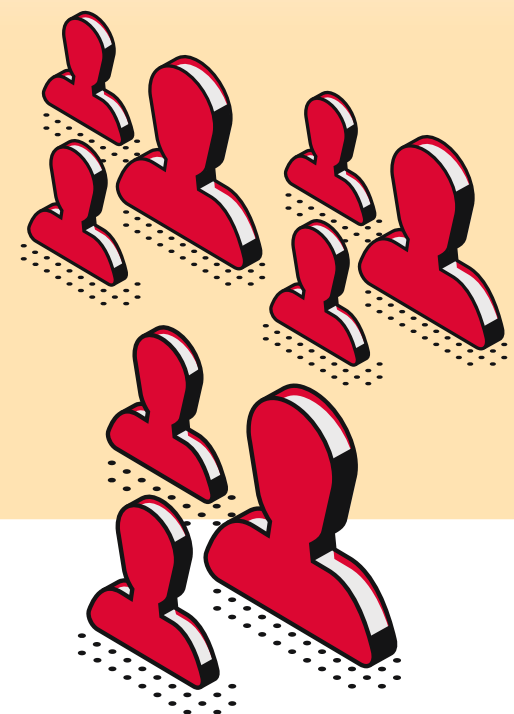


**1994:**

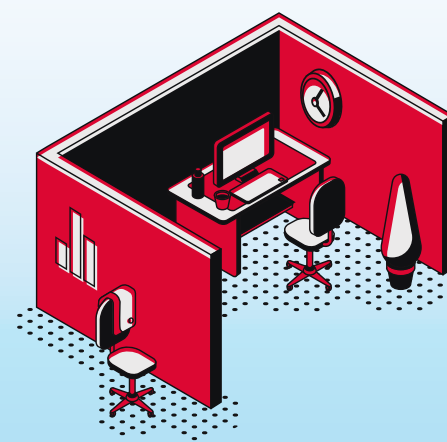
3 employees including Mark Swallow, founding Partner & Office Head, assisted by Tim Evans, Senior Surveyor.

**2019:**

76 employees, including Peter Bowden, Partner & Office Head.



2

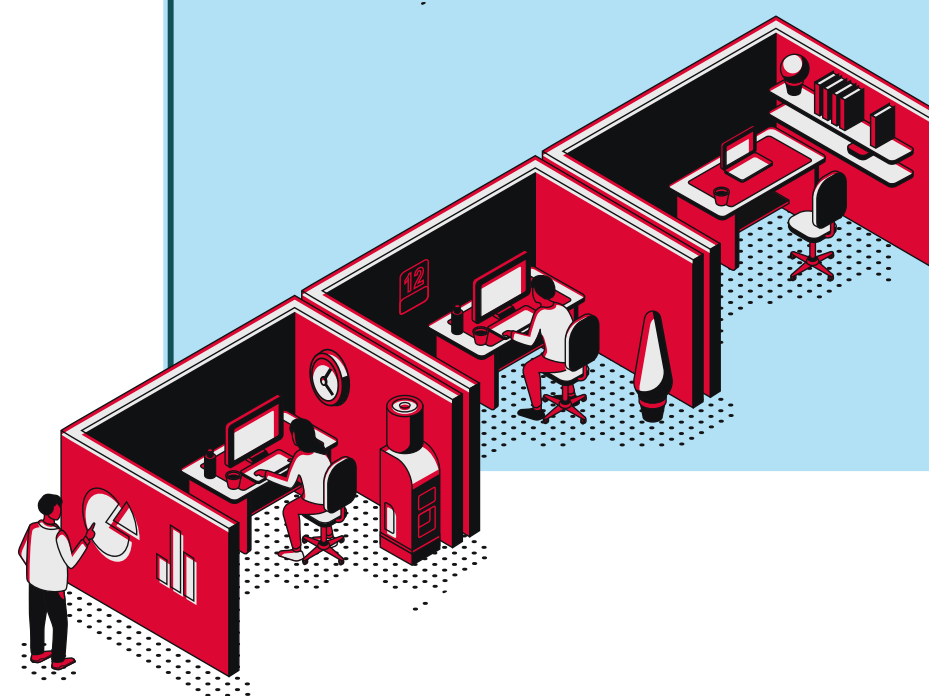


**1994:**

350 sq. ft. office at Doxford International, Sunderland.

**2019:**

5,000 sq. ft. office on Newcastle Quayside.



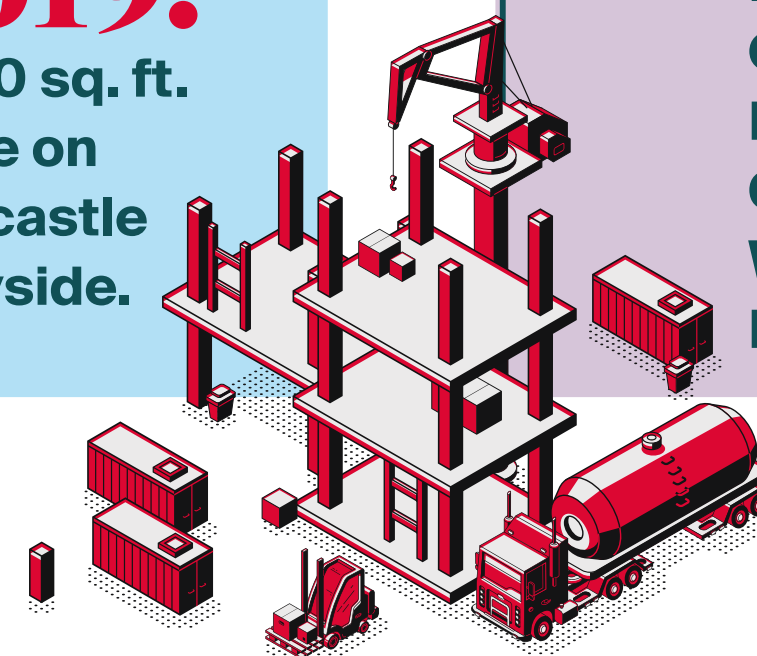
3

**1994:**

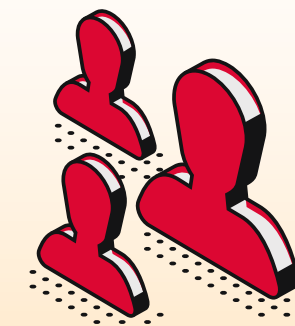
Large office instructions - Akeler's Doxford International & Amec's Newcastle Quayside.

**2019:**

Newcastle City Council's Stephenson Quarter and Partnership House; Taras Properties' Bank House; Sunderland City Council's The Beam; and Wynyard Park for Northumberland Estates.



4

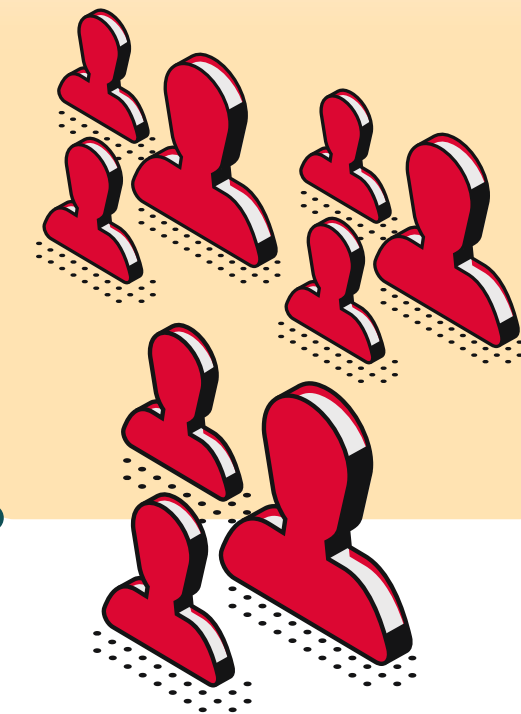


**1994:**

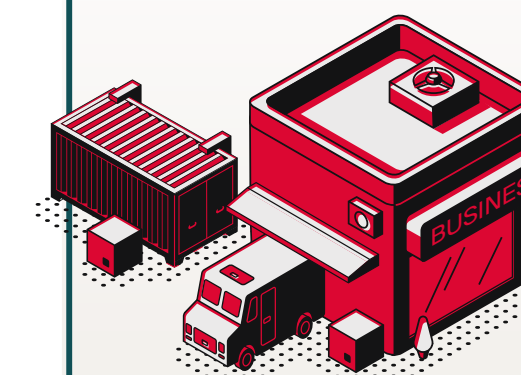
1 female employee.

**2019:**

30 female employees.



5



**1994:**

Managed 90,000 sq. ft. of commercial space.

**2019:**

Manage 19.2m sq. ft. of commercial space.

